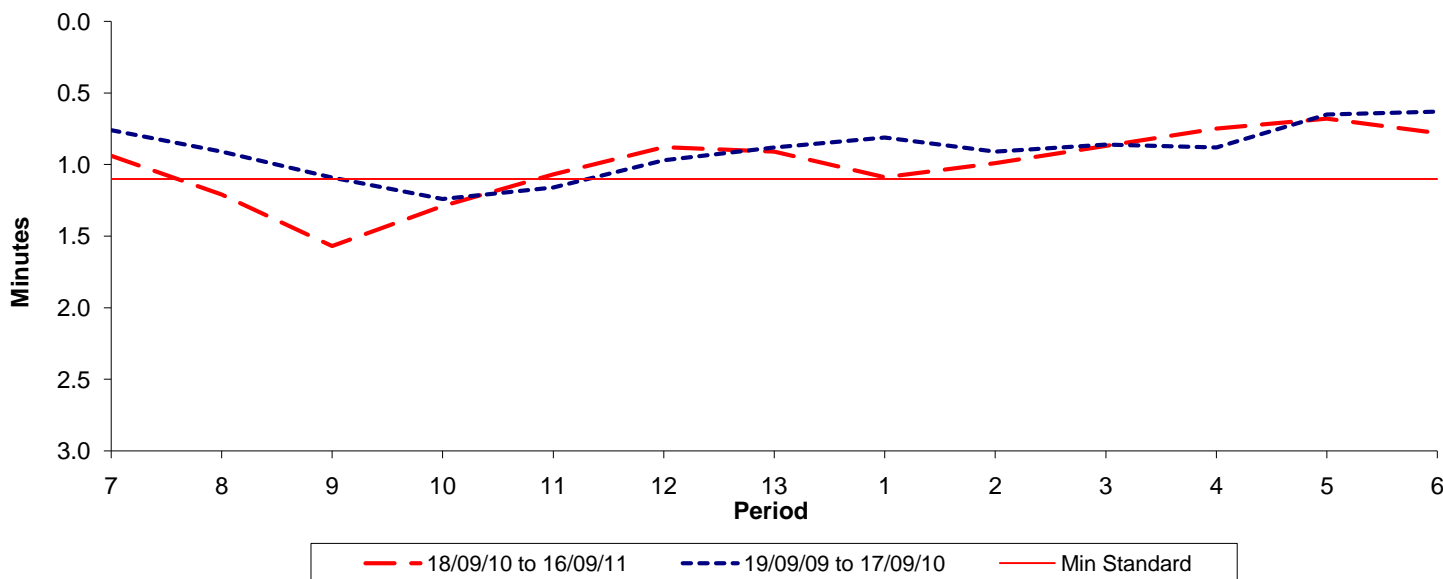




**Reliability Performance ( High Frequency )**

**Excess Waiting Time (minutes)**

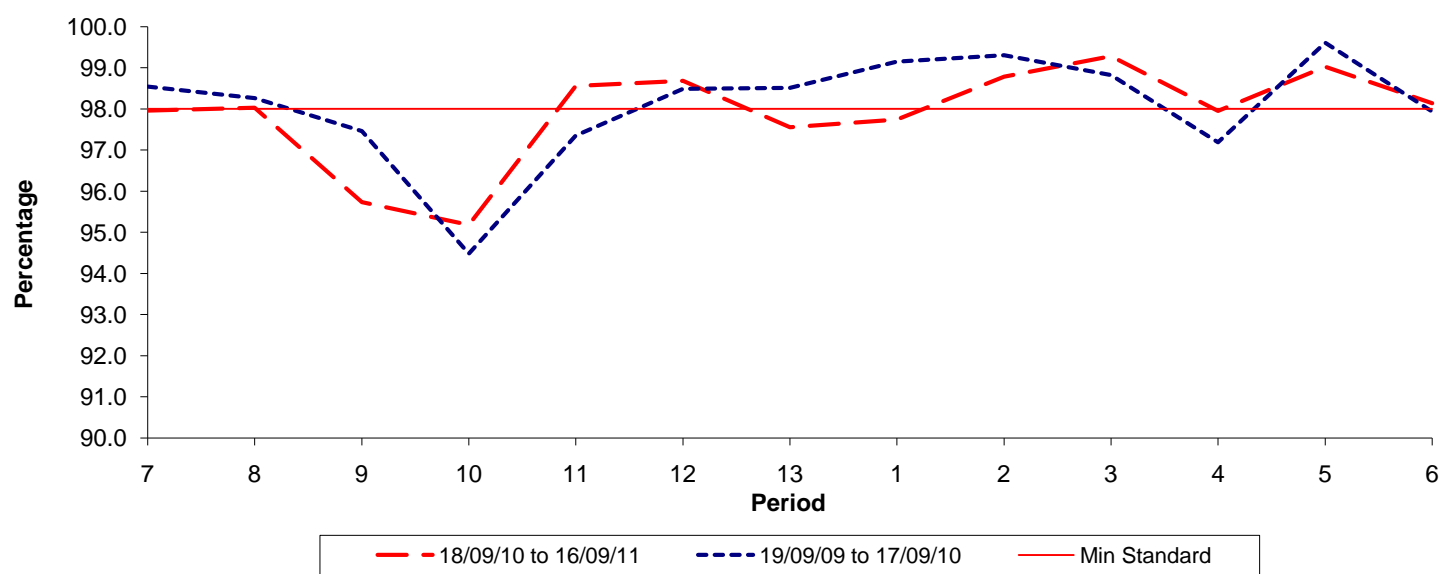


Date Range / Period	7	8	9	10	11	12	13	1	2	3	4	5	6
18/09/10 to 16/09/11	0.94	1.21	1.57	1.29	1.07	0.88	0.91	1.09	0.99	0.87	0.75	0.68	0.78
19/09/09 to 17/09/10	0.76	0.91	1.09	1.24	1.16	0.97	0.88	0.81	0.91	0.86	0.88	0.65	0.63
Min Standard	1.10	1.10	1.10	1.10	1.10	1.10	1.10	1.10	1.10	1.10	1.10	1.10	1.10

Excess Waiting Time figures are based on 12 weeks data

**Kilometre Performance**

**% Kilometres Operated**



Date Range / Period	7	8	9	10	11	12	13	1	2	3	4	5	6
18/09/10 to 16/09/11	97.96	98.03	95.73	95.18	98.56	98.68	97.55	97.74	98.78	99.28	97.95	99.02	98.14
19/09/09 to 17/09/10	98.54	98.26	97.46	94.48	97.35	98.49	98.51	99.15	99.31	98.82	97.19	99.61	97.94
Min Standard	98.00	98.00	98.00	98.00	98.00	98.00	98.00	98.00	98.00	98.00	98.00	98.00	98.00

Kilometre figures are based on 4 weeks data