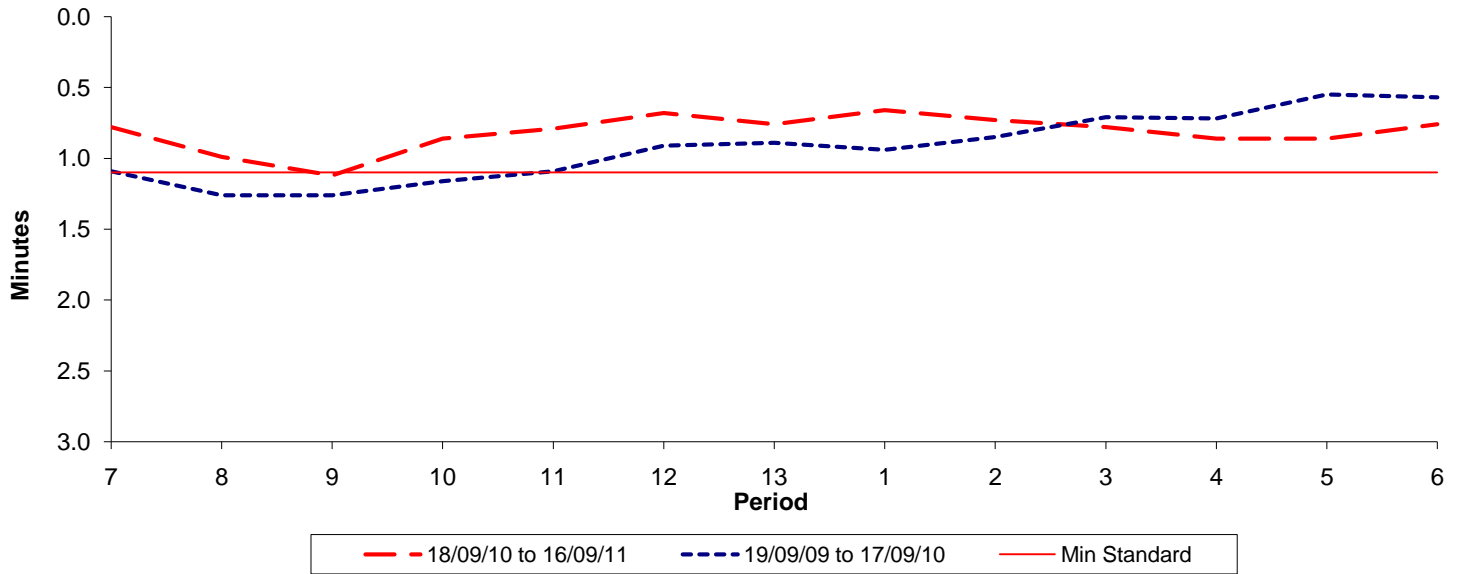




**Reliability Performance ( High Frequency )**

**Excess Waiting Time (minutes)**

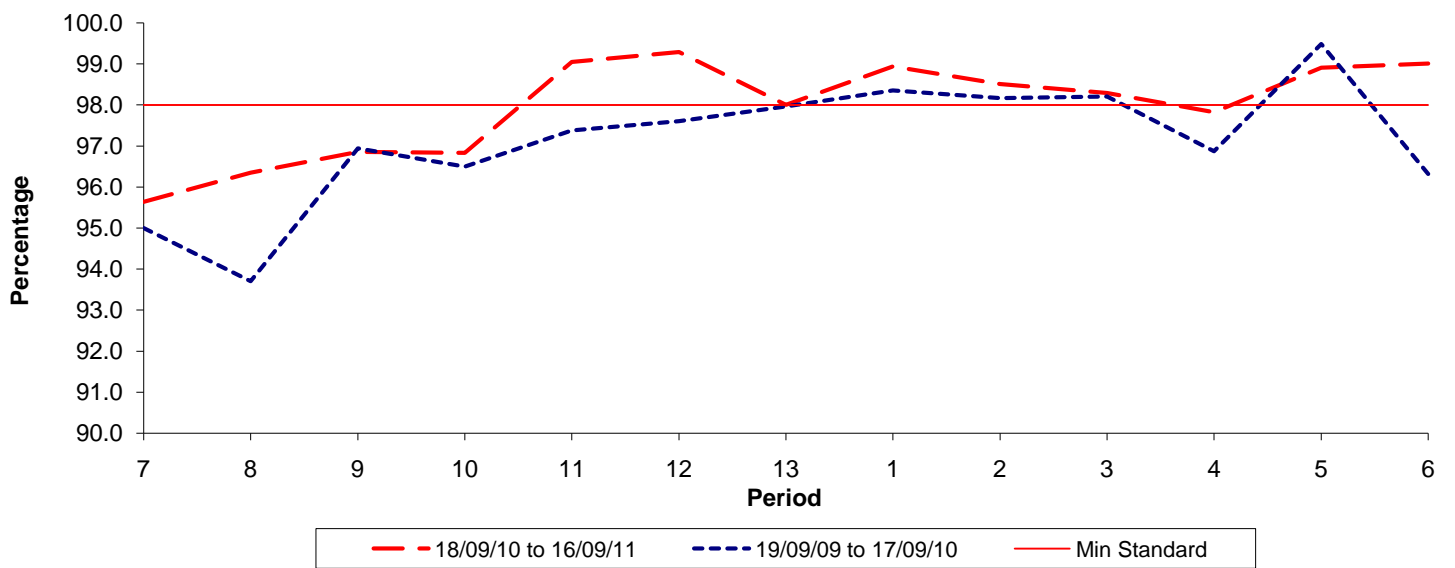


Date Range / Period	7	8	9	10	11	12	13	1	2	3	4	5	6
18/09/10 to 16/09/11	0.78	0.99	1.12	0.86	0.79	0.68	0.76	0.66	0.73	0.78	0.86	0.86	0.76
19/09/09 to 17/09/10	1.09	1.26	1.26	1.16	1.09	0.91	0.89	0.94	0.85	0.71	0.72	0.55	0.57
Min Standard	1.10	1.10	1.10	1.10	1.10	1.10	1.10	1.10	1.10	1.10	1.10	1.10	1.10

Excess Waiting Time figures are based on 12 weeks data

**Kilometre Performance**

**% Kilometres Operated**



Date Range / Period	7	8	9	10	11	12	13	1	2	3	4	5	6
18/09/10 to 16/09/11	95.64	96.35	96.86	96.83	99.05	99.29	98.00	98.94	98.51	98.29	97.82	98.91	99.01
19/09/09 to 17/09/10	95.00	93.70	96.94	96.50	97.38	97.61	97.97	98.36	98.17	98.21	96.87	99.49	96.32
Min Standard	98.00	98.00	98.00	98.00	98.00	98.00	98.00	98.00	98.00	98.00	98.00	98.00	98.00

Kilometre figures are based on 4 weeks data