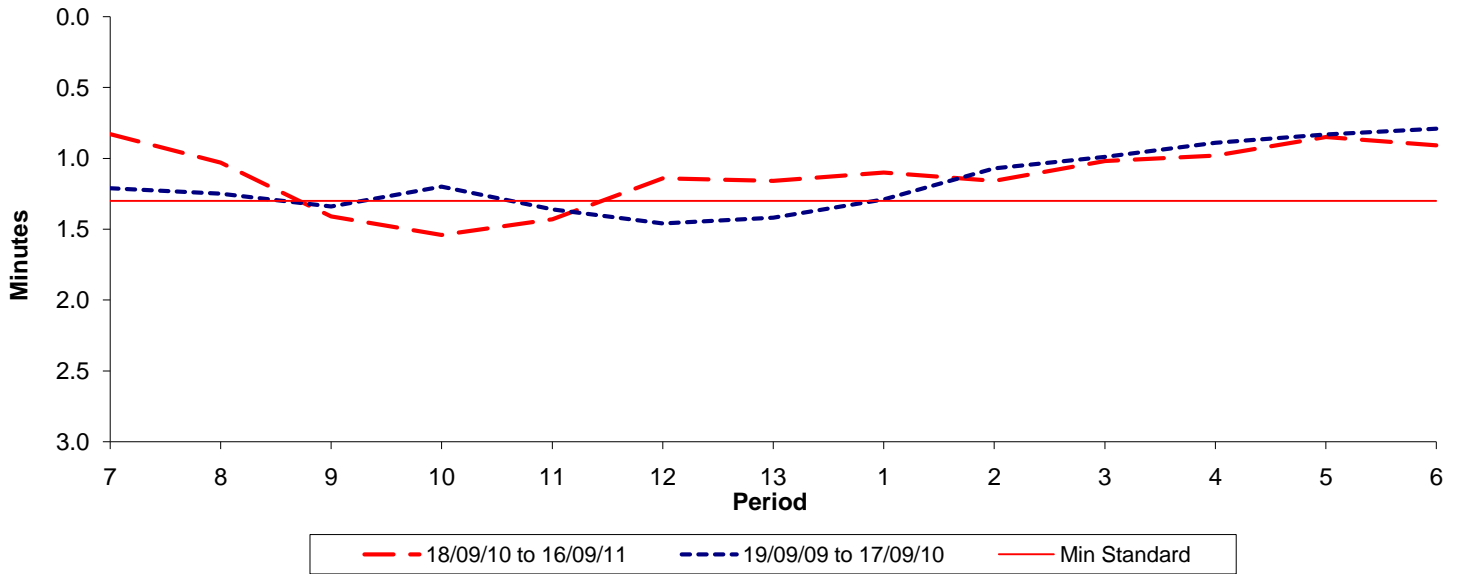




Reliability Performance (High Frequency)

Excess Waiting Time (minutes)

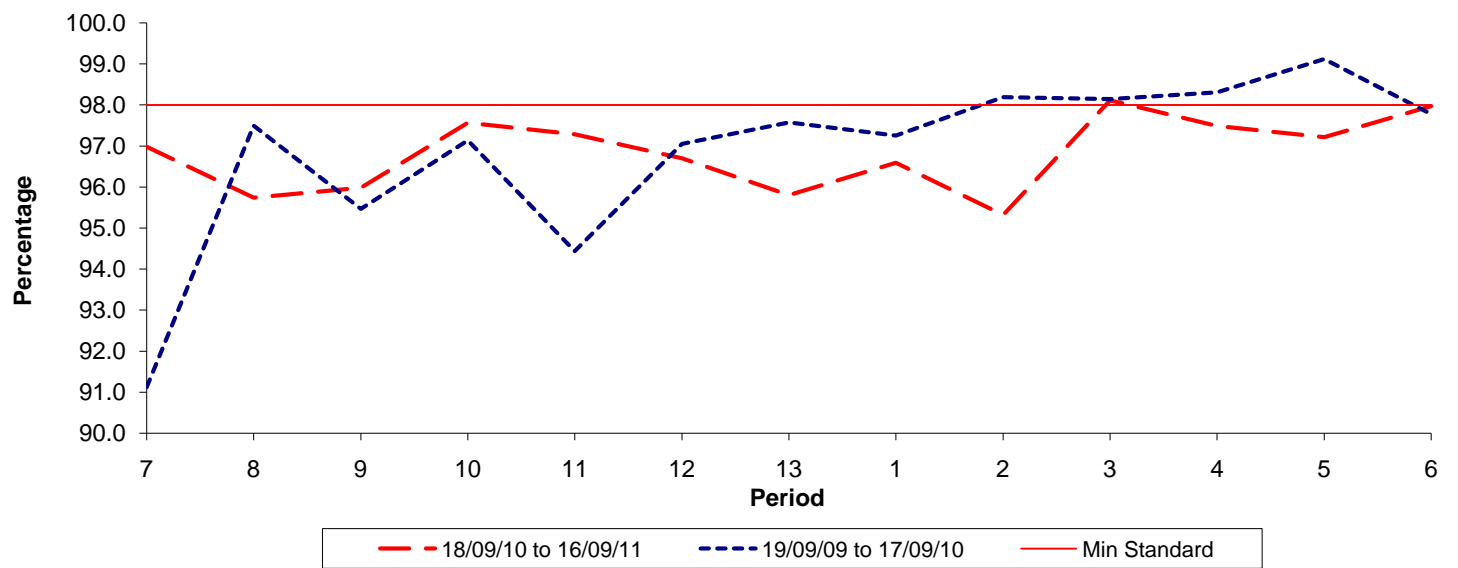


Date Range / Period	7	8	9	10	11	12	13	1	2	3	4	5	6
18/09/10 to 16/09/11	0.83	1.03	1.41	1.54	1.43	1.14	1.16	1.10	1.16	1.02	0.98	0.85	0.91
19/09/09 to 17/09/10	1.21	1.25	1.34	1.20	1.36	1.46	1.42	1.29	1.07	0.99	0.89	0.83	0.79
Min Standard	1.30	1.30	1.30	1.30	1.30	1.30	1.30	1.30	1.30	1.30	1.30	1.30	1.30

Excess Waiting Time figures are based on 12 weeks data

Kilometre Performance

% Kilometres Operated



Date Range / Period	7	8	9	10	11	12	13	1	2	3	4	5	6
18/09/10 to 16/09/11	96.98	95.74	95.98	97.57	97.28	96.70	95.80	96.59	95.32	98.11	97.49	97.21	97.97
19/09/09 to 17/09/10	91.12	97.49	95.47	97.13	94.43	97.05	97.57	97.25	98.19	98.14	98.31	99.12	97.77
Min Standard	98.00	98.00	98.00	98.00	98.00	98.00	98.00	98.00	98.00	98.00	98.00	98.00	98.00

Kilometre figures are based on 4 weeks data