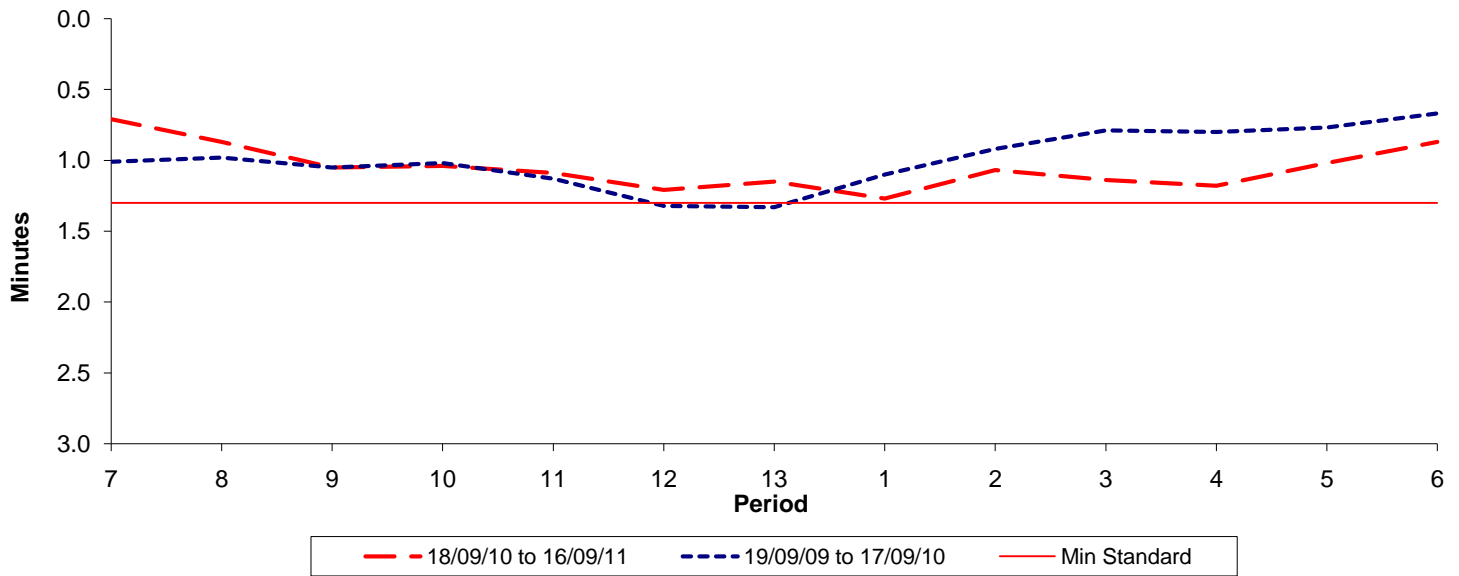




Reliability Performance (High Frequency)

Excess Waiting Time (minutes)

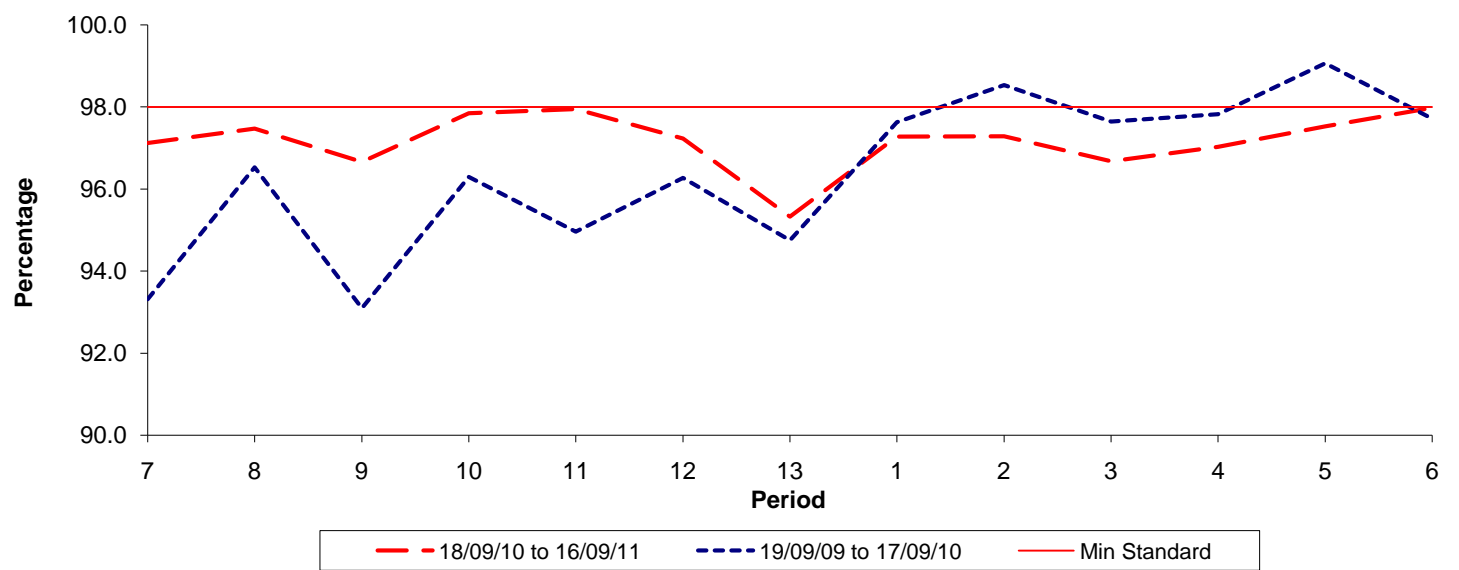


Date Range / Period	7	8	9	10	11	12	13	1	2	3	4	5	6
18/09/10 to 16/09/11	0.71	0.87	1.05	1.04	1.09	1.21	1.15	1.27	1.07	1.14	1.18	1.02	0.87
19/09/09 to 17/09/10	1.01	0.98	1.05	1.02	1.13	1.32	1.33	1.10	0.92	0.79	0.80	0.77	0.67
Min Standard	1.30	1.30	1.30	1.30	1.30	1.30	1.30	1.30	1.30	1.30	1.30	1.30	1.30

Excess Waiting Time figures are based on 12 weeks data

Kilometre Performance

% Kilometres Operated



Date Range / Period	7	8	9	10	11	12	13	1	2	3	4	5	6
18/09/10 to 16/09/11	97.12	97.47	96.66	97.85	97.95	97.23	95.33	97.28	97.29	96.68	97.03	97.53	97.98
19/09/09 to 17/09/10	93.32	96.53	93.10	96.30	94.96	96.27	94.75	97.63	98.53	97.64	97.83	99.06	97.72
Min Standard	98.00	98.00	98.00	98.00	98.00	98.00	98.00	98.00	98.00	98.00	98.00	98.00	98.00

Kilometre figures are based on 4 weeks data