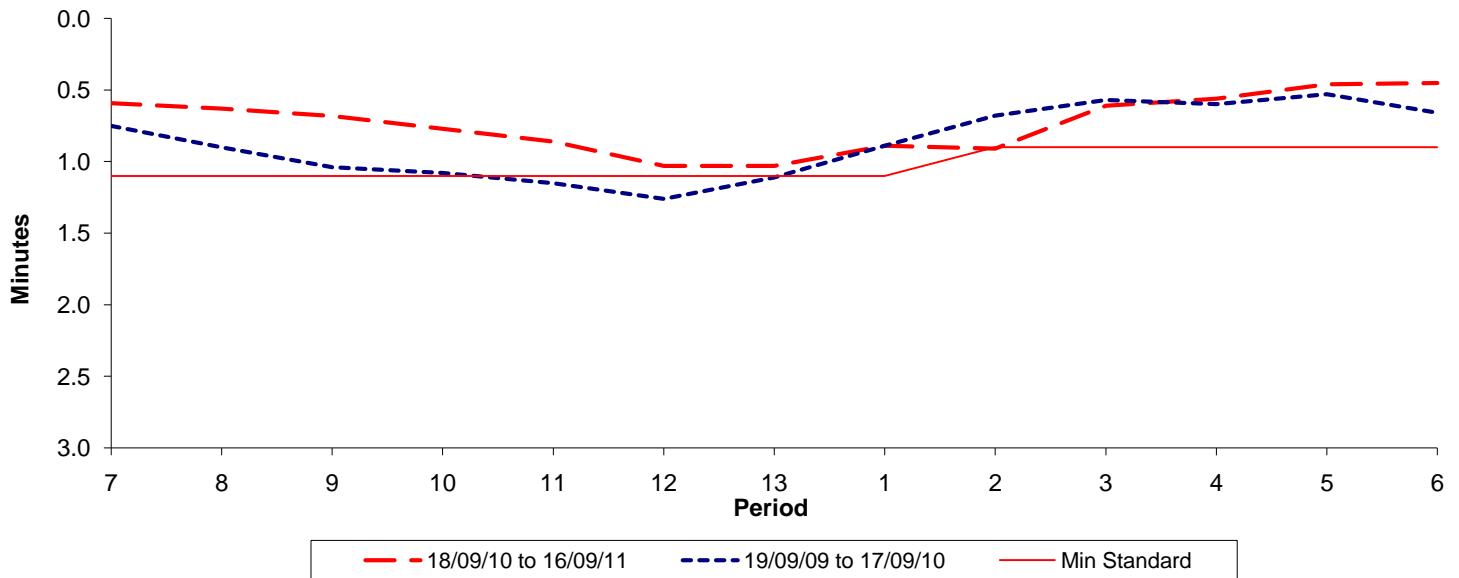




Reliability Performance (High Frequency)

Excess Waiting Time (minutes)

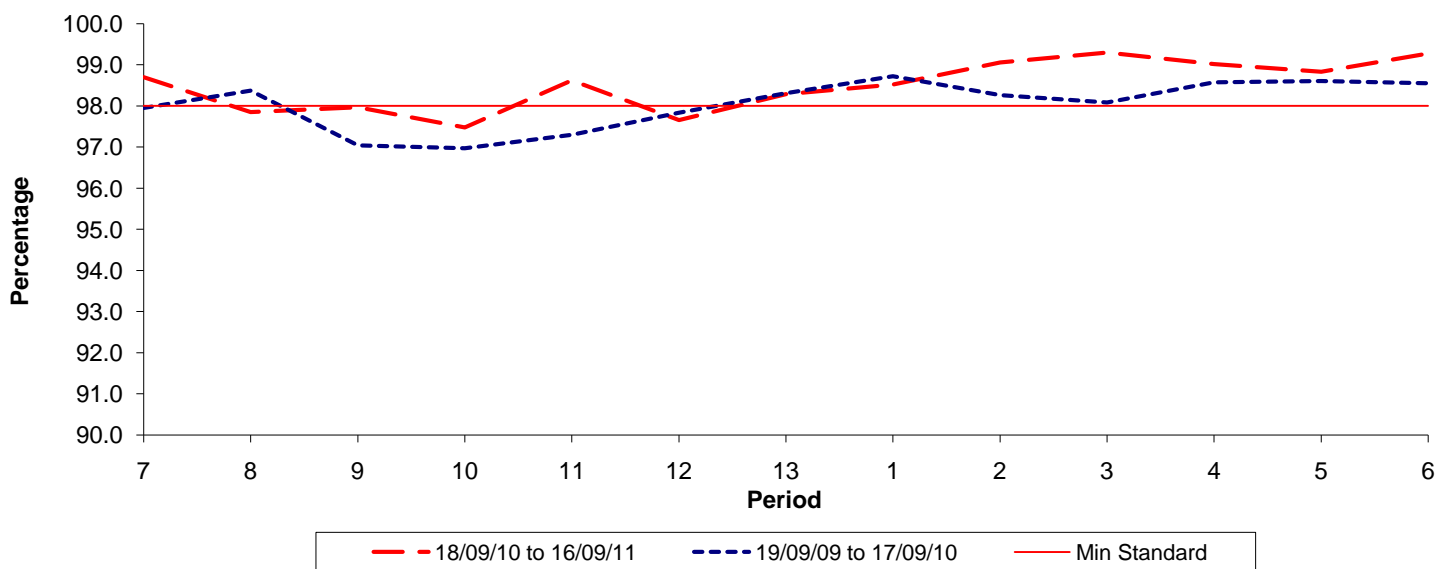


Date Range / Period	7	8	9	10	11	12	13	1	2	3	4	5	6
18/09/10 to 16/09/11	0.59	0.63	0.68	0.77	0.86	1.03	1.03	0.89	0.91	0.61	0.56	0.46	0.45
19/09/09 to 17/09/10	0.75	0.90	1.04	1.08	1.15	1.26	1.11	0.89	0.68	0.57	0.60	0.53	0.66
Min Standard	1.10	1.10	1.10	1.10	1.10	1.10	1.10	1.10	0.90	0.90	0.90	0.90	0.90

Excess Waiting Time figures are based on 12 weeks data

Kilometre Performance

% Kilometres Operated



Date Range / Period	7	8	9	10	11	12	13	1	2	3	4	5	6
18/09/10 to 16/09/11	98.70	97.85	97.97	97.48	98.62	97.66	98.29	98.52	99.06	99.30	99.02	98.83	99.28
19/09/09 to 17/09/10	97.95	98.37	97.04	96.97	97.30	97.83	98.31	98.72	98.26	98.08	98.57	98.60	98.55
Min Standard	98.00	98.00	98.00	98.00	98.00	98.00	98.00	98.00	98.00	98.00	98.00	98.00	98.00

Kilometre figures are based on 4 weeks data