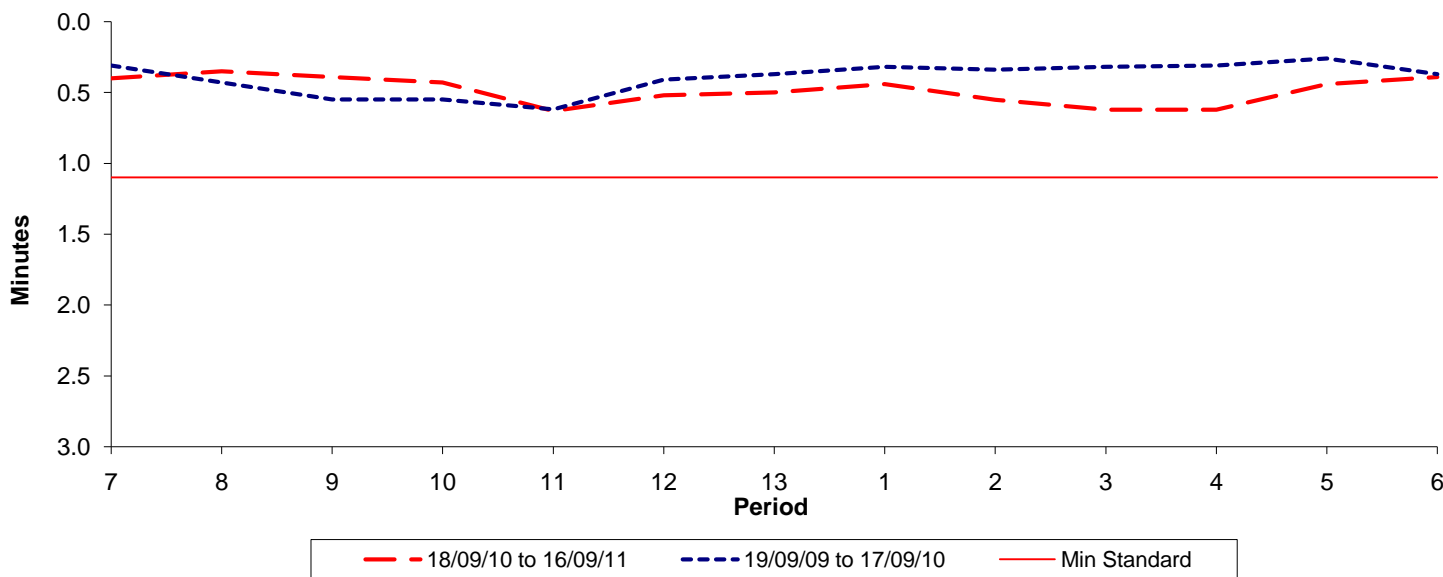




Reliability Performance (High Frequency)

Excess Waiting Time (minutes)

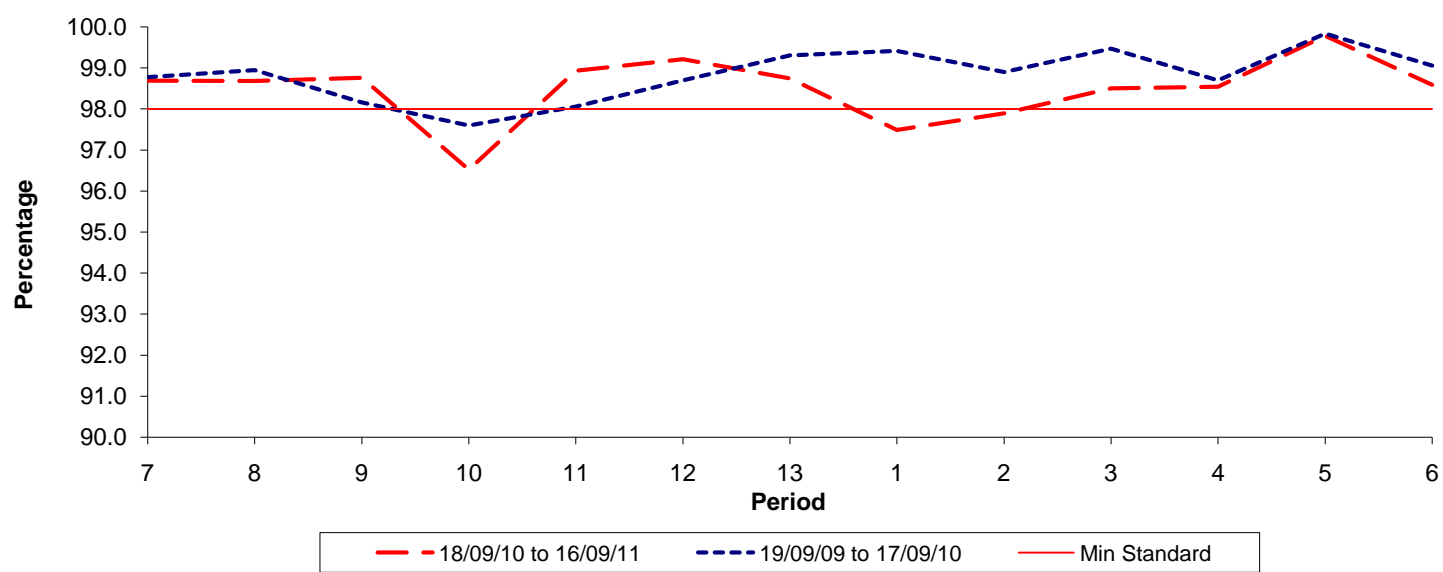


Date Range / Period	7	8	9	10	11	12	13	1	2	3	4	5	6
18/09/10 to 16/09/11	0.40	0.35	0.39	0.43	0.63	0.52	0.50	0.44	0.55	0.62	0.62	0.44	0.39
19/09/09 to 17/09/10	0.31	0.43	0.55	0.55	0.62	0.41	0.37	0.32	0.34	0.32	0.31	0.26	0.37
Min Standard	1.10	1.10	1.10	1.10	1.10	1.10	1.10	1.10	1.10	1.10	1.10	1.10	1.10

Excess Waiting Time figures are based on 12 weeks data

Kilometre Performance

% Kilometres Operated



Date Range / Period	7	8	9	10	11	12	13	1	2	3	4	5	6
18/09/10 to 16/09/11	98.69	98.68	98.76	96.52	98.93	99.21	98.74	97.49	97.89	98.50	98.54	99.78	98.59
19/09/09 to 17/09/10	98.78	98.95	98.16	97.60	98.06	98.70	99.31	99.42	98.90	99.47	98.70	99.84	99.06
Min Standard	98.00	98.00	98.00	98.00	98.00	98.00	98.00	98.00	98.00	98.00	98.00	98.00	98.00

Kilometre figures are based on 4 weeks data