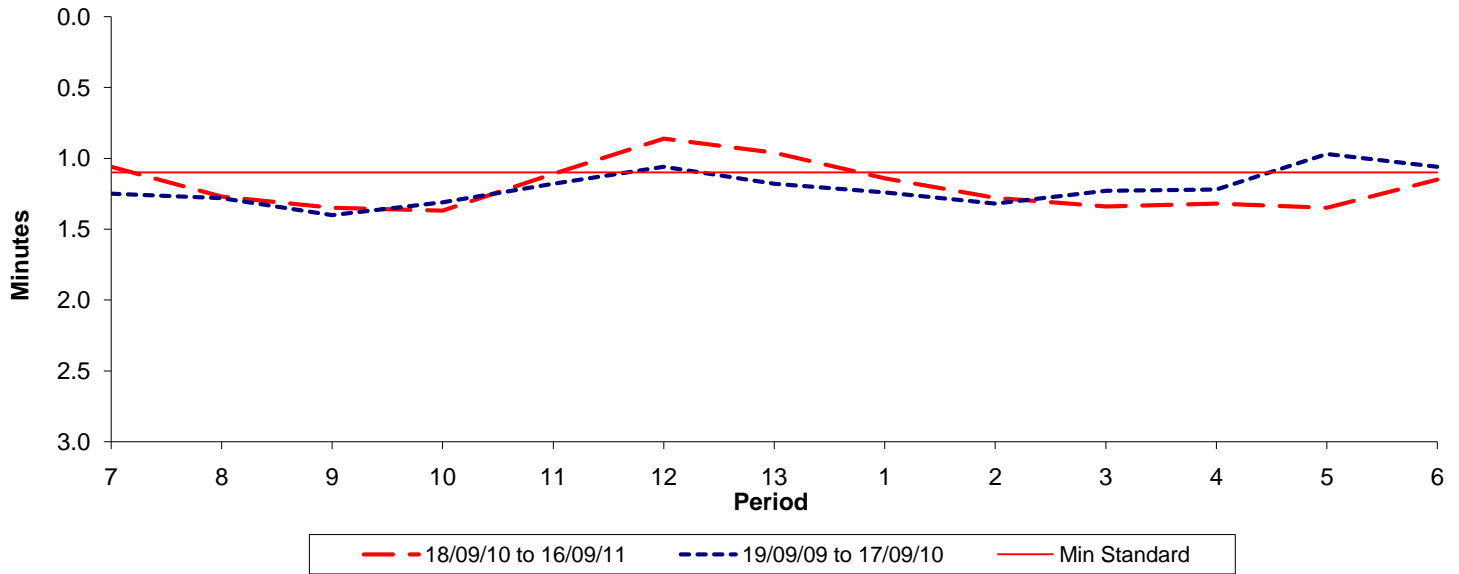




**Reliability Performance ( High Frequency )**

**Excess Waiting Time (minutes)**

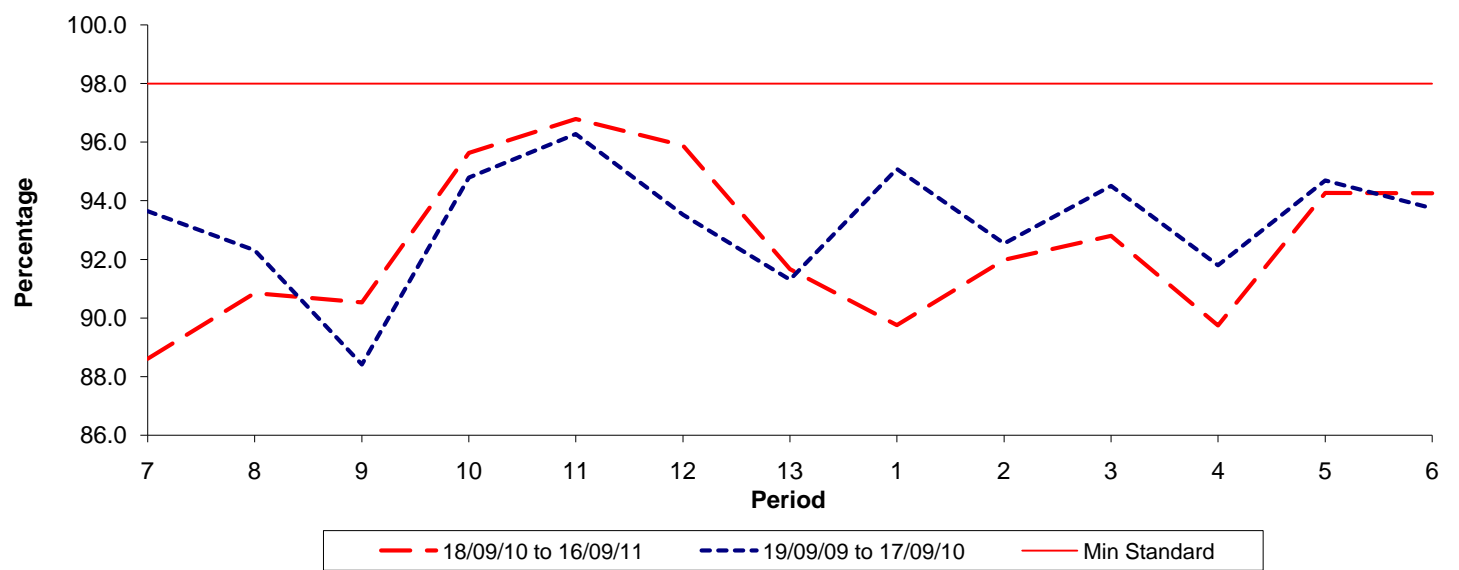


Date Range / Period	7	8	9	10	11	12	13	1	2	3	4	5	6
18/09/10 to 16/09/11	1.06	1.27	1.35	1.37	1.11	0.86	0.96	1.14	1.28	1.34	1.32	1.35	1.15
19/09/09 to 17/09/10	1.25	1.28	1.40	1.31	1.18	1.06	1.18	1.24	1.32	1.23	1.22	0.97	1.06
Min Standard	1.10	1.10	1.10	1.10	1.10	1.10	1.10	1.10	1.10	1.10	1.10	1.10	1.10

Excess Waiting Time figures are based on 12 weeks data

**Kilometre Performance**

**% Kilometres Operated**



Date Range / Period	7	8	9	10	11	12	13	1	2	3	4	5	6
18/09/10 to 16/09/11	88.61	90.85	90.53	95.63	96.79	95.89	91.67	89.75	91.98	92.80	89.74	94.27	94.25
19/09/09 to 17/09/10	93.65	92.31	88.41	94.79	96.28	93.53	91.30	95.09	92.54	94.51	91.80	94.70	93.74
Min Standard	98.00	98.00	98.00	98.00	98.00	98.00	98.00	98.00	98.00	98.00	98.00	98.00	98.00

Kilometre figures are based on 4 weeks data