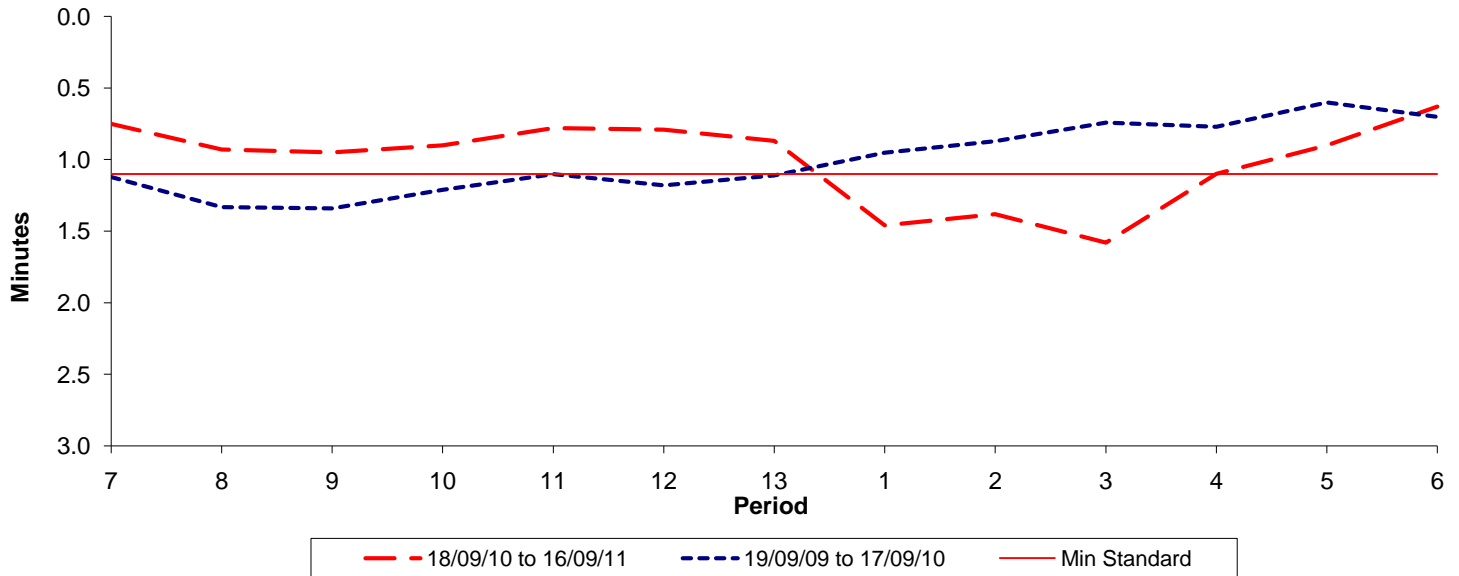




Reliability Performance (High Frequency)

Excess Waiting Time (minutes)

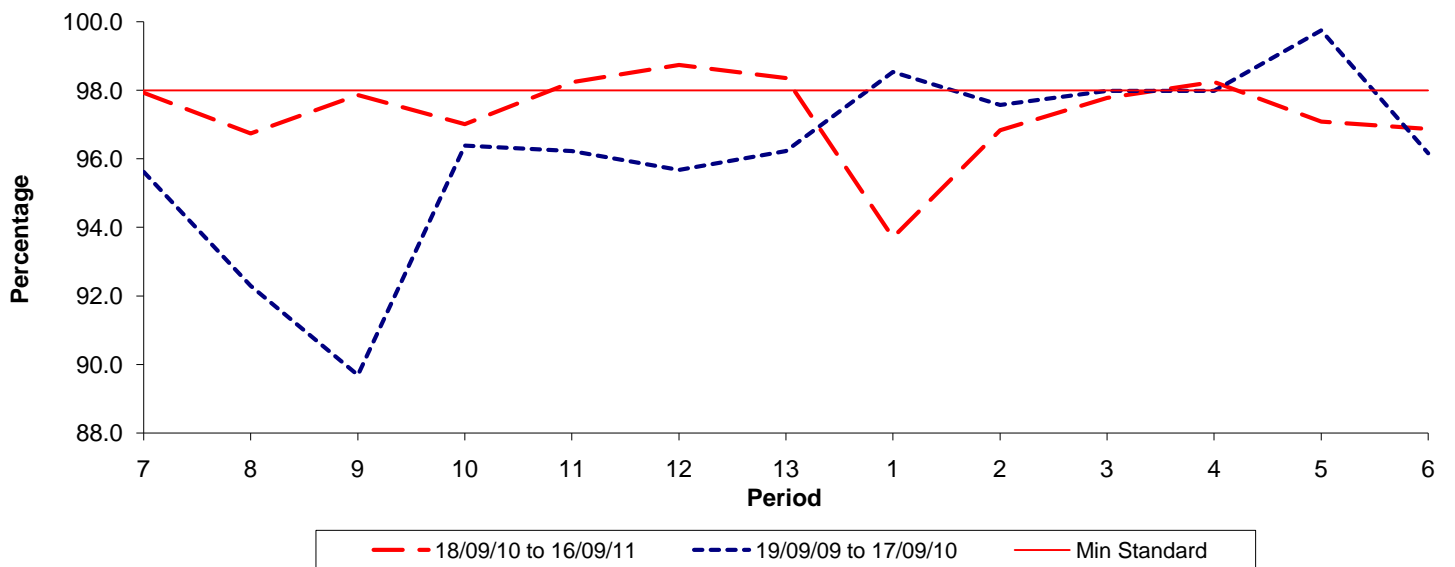


Date Range / Period	7	8	9	10	11	12	13	1	2	3	4	5	6
18/09/10 to 16/09/11	0.75	0.93	0.95	0.90	0.78	0.79	0.87	1.46	1.38	1.58	1.10	0.90	0.63
19/09/09 to 17/09/10	1.12	1.33	1.34	1.21	1.10	1.18	1.11	0.95	0.87	0.74	0.77	0.60	0.70
Min Standard	1.10	1.10	1.10	1.10	1.10	1.10	1.10	1.10	1.10	1.10	1.10	1.10	1.10

Excess Waiting Time figures are based on 12 weeks data

Kilometre Performance

% Kilometres Operated



Date Range / Period	7	8	9	10	11	12	13	1	2	3	4	5	6
18/09/10 to 16/09/11	97.93	96.74	97.86	97.01	98.24	98.74	98.36	93.71	96.84	97.78	98.25	97.09	96.87
19/09/09 to 17/09/10	95.62	92.30	89.69	96.39	96.23	95.68	96.23	98.54	97.57	97.98	97.98	99.75	96.16
Min Standard	98.00	98.00	98.00	98.00	98.00	98.00	98.00	98.00	98.00	98.00	98.00	98.00	98.00

Kilometre figures are based on 4 weeks data