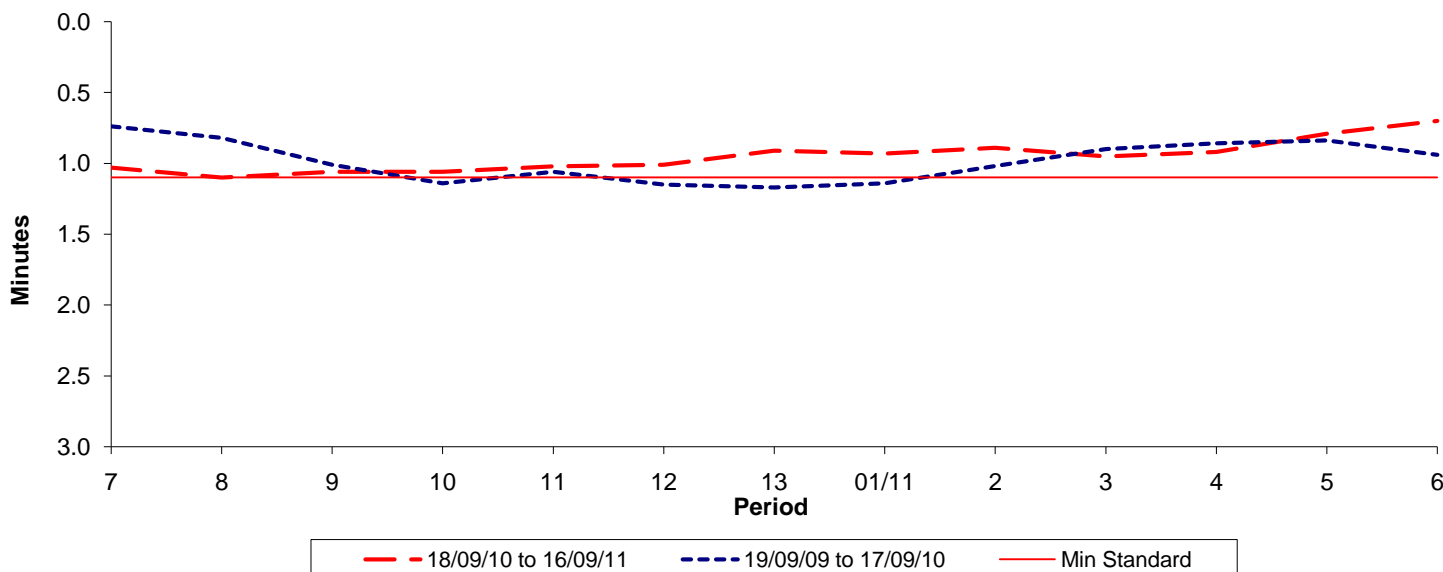




Reliability Performance (High Frequency)

Excess Waiting Time (minutes)

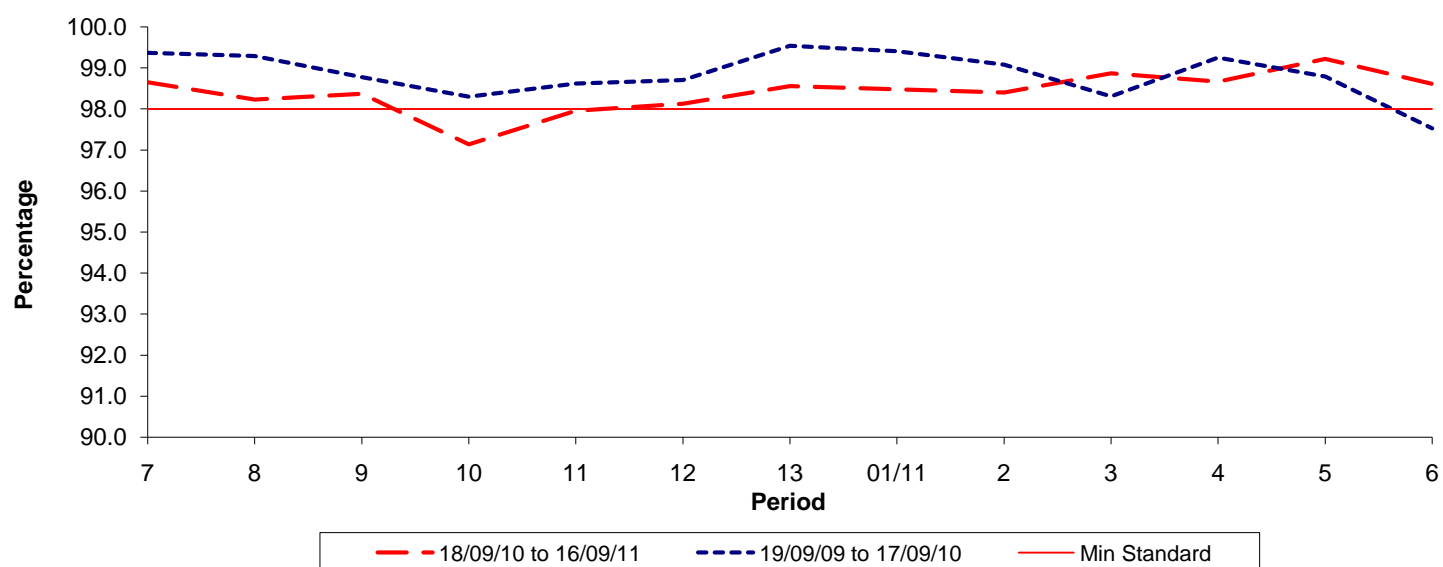


Date Range / Period	7	8	9	10	11	12	13	01/11	2	3	4	5	6
18/09/10 to 16/09/11	1.03	1.10	1.06	1.06	1.02	1.01	0.91	0.93	0.89	0.95	0.92	0.79	0.70
19/09/09 to 17/09/10	0.74	0.82	1.01	1.14	1.06	1.15	1.17	1.14	1.02	0.90	0.86	0.84	0.94
Min Standard	1.10	1.10	1.10	1.10	1.10	1.10	1.10	1.10	1.10	1.10	1.10	1.10	1.10

Excess Waiting Time figures are based on 12 weeks data

Kilometre Performance

% Kilometres Operated



Date Range / Period	7	8	9	10	11	12	13	01/11	2	3	4	5	6
18/09/10 to 16/09/11	98.65	98.23	98.37	97.14	97.96	98.13	98.56	98.48	98.40	98.87	98.67	99.22	98.61
19/09/09 to 17/09/10	99.37	99.29	98.78	98.30	98.62	98.71	99.54	99.41	99.08	98.31	99.25	98.79	97.53
Min Standard	98.00	98.00	98.00	98.00	98.00	98.00	98.00	98.00	98.00	98.00	98.00	98.00	98.00

Kilometre figures are based on 4 weeks data