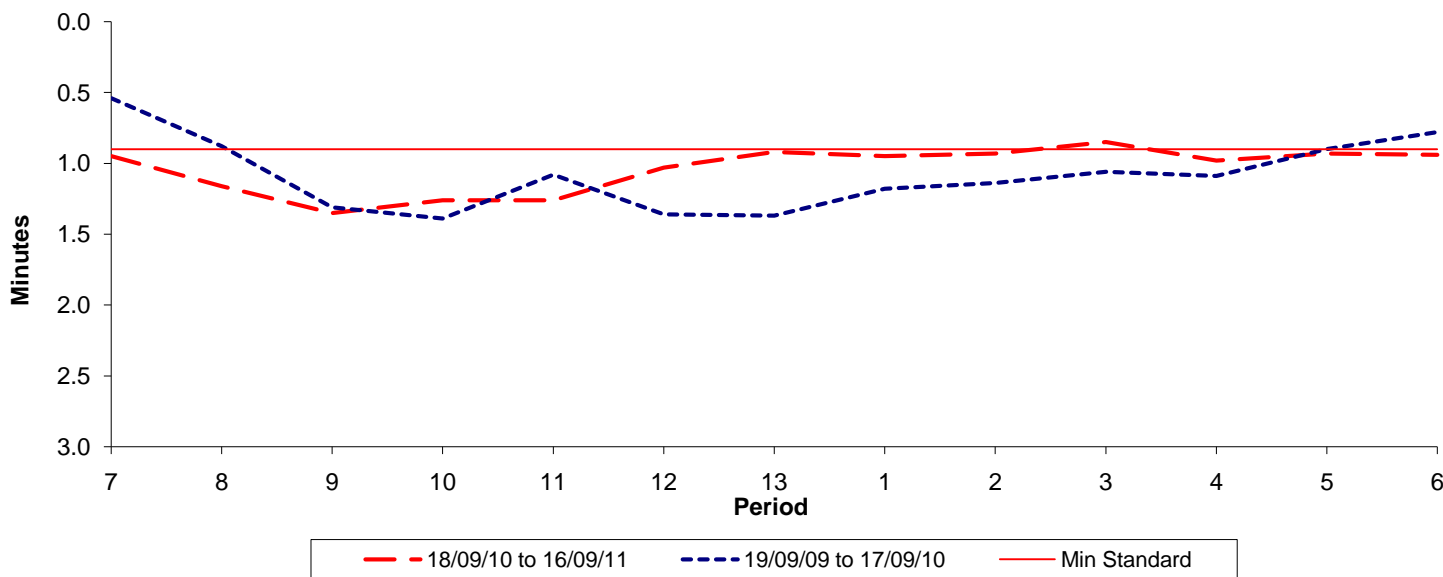




Reliability Performance (High Frequency)

Excess Waiting Time (minutes)

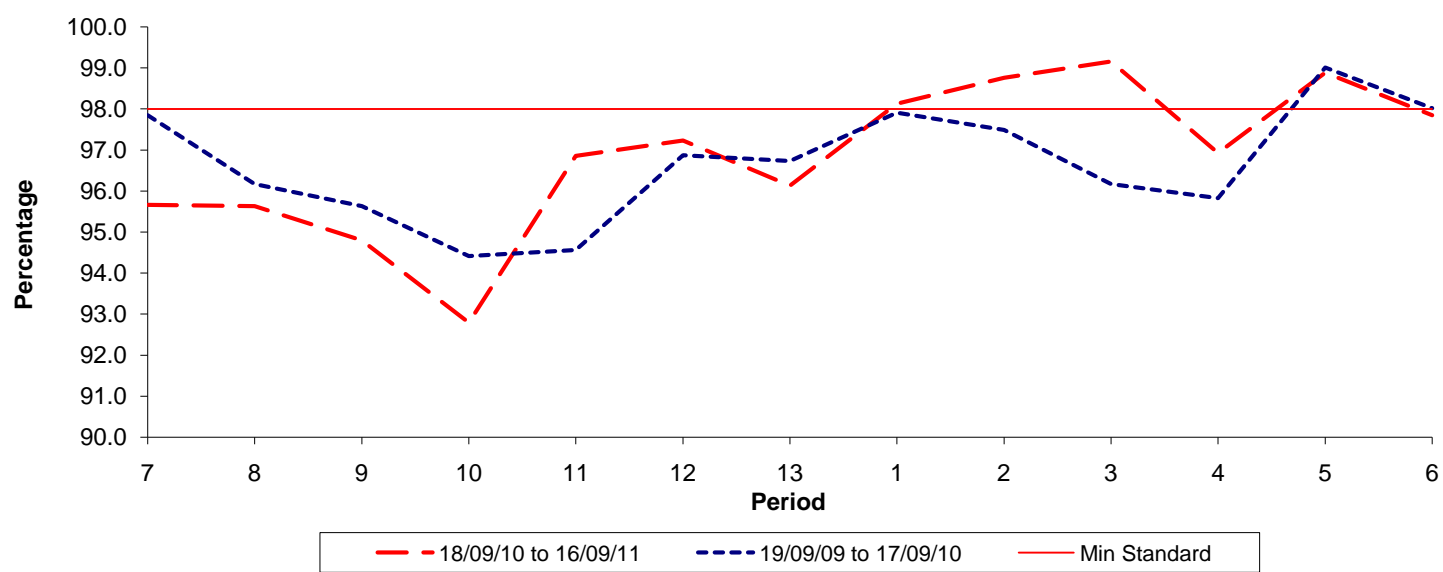


Date Range / Period	7	8	9	10	11	12	13	1	2	3	4	5	6
18/09/10 to 16/09/11	0.95	1.16	1.35	1.26	1.26	1.03	0.92	0.95	0.93	0.85	0.98	0.93	0.94
19/09/09 to 17/09/10	0.54	0.88	1.31	1.39	1.08	1.36	1.37	1.18	1.14	1.06	1.09	0.90	0.78
Min Standard	0.90	0.90	0.90	0.90	0.90	0.90	0.90	0.90	0.90	0.90	0.90	0.90	0.90

Excess Waiting Time figures are based on 12 weeks data

Kilometre Performance

% Kilometres Operated



Date Range / Period	7	8	9	10	11	12	13	1	2	3	4	5	6
18/09/10 to 16/09/11	95.66	95.63	94.80	92.79	96.86	97.23	96.13	98.13	98.76	99.16	96.93	98.89	97.85
19/09/09 to 17/09/10	97.85	96.17	95.63	94.41	94.56	96.87	96.73	97.91	97.49	96.17	95.82	99.01	98.02
Min Standard	98.00	98.00	98.00	98.00	98.00	98.00	98.00	98.00	98.00	98.00	98.00	98.00	98.00

Kilometre figures are based on 4 weeks data