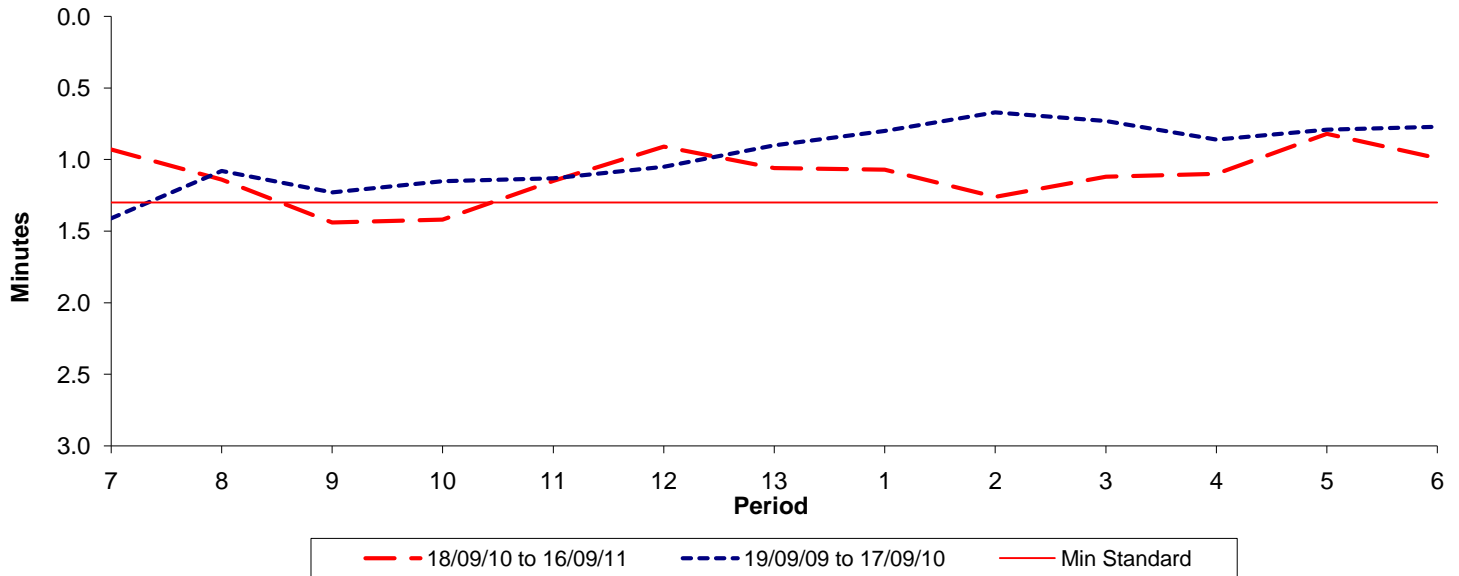




Reliability Performance (High Frequency)

Excess Waiting Time (minutes)

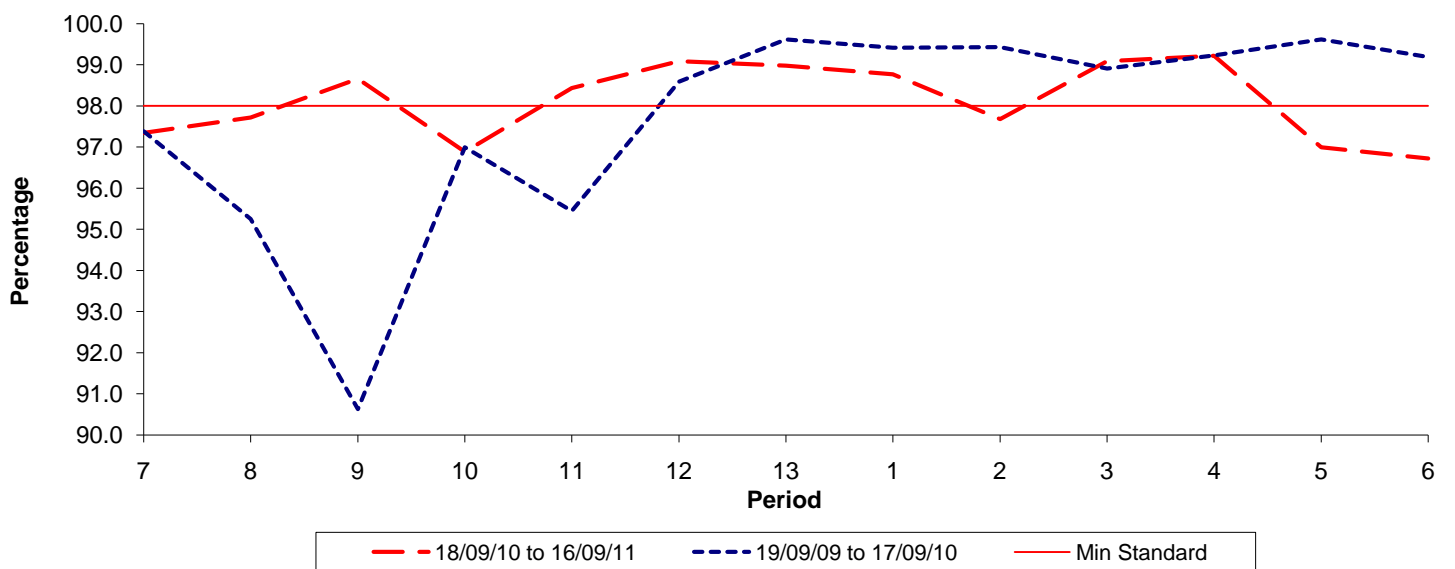


Date Range / Period	7	8	9	10	11	12	13	1	2	3	4	5	6
18/09/10 to 16/09/11	0.93	1.14	1.44	1.42	1.15	0.91	1.06	1.07	1.26	1.12	1.10	0.82	0.99
19/09/09 to 17/09/10	1.41	1.08	1.23	1.15	1.13	1.05	0.90	0.80	0.67	0.73	0.86	0.79	0.77
Min Standard	1.30	1.30	1.30	1.30	1.30	1.30	1.30	1.30	1.30	1.30	1.30	1.30	1.30

Excess Waiting Time figures are based on 12 weeks data

Kilometre Performance

% Kilometres Operated



Date Range / Period	7	8	9	10	11	12	13	1	2	3	4	5	6
18/09/10 to 16/09/11	97.34	97.72	98.66	96.88	98.43	99.09	98.98	98.77	97.68	99.09	99.22	96.99	96.72
19/09/09 to 17/09/10	97.39	95.25	90.63	97.00	95.45	98.59	99.62	99.42	99.43	98.91	99.23	99.62	99.19
Min Standard	98.00	98.00	98.00	98.00	98.00	98.00	98.00	98.00	98.00	98.00	98.00	98.00	98.00

Kilometre figures are based on 4 weeks data