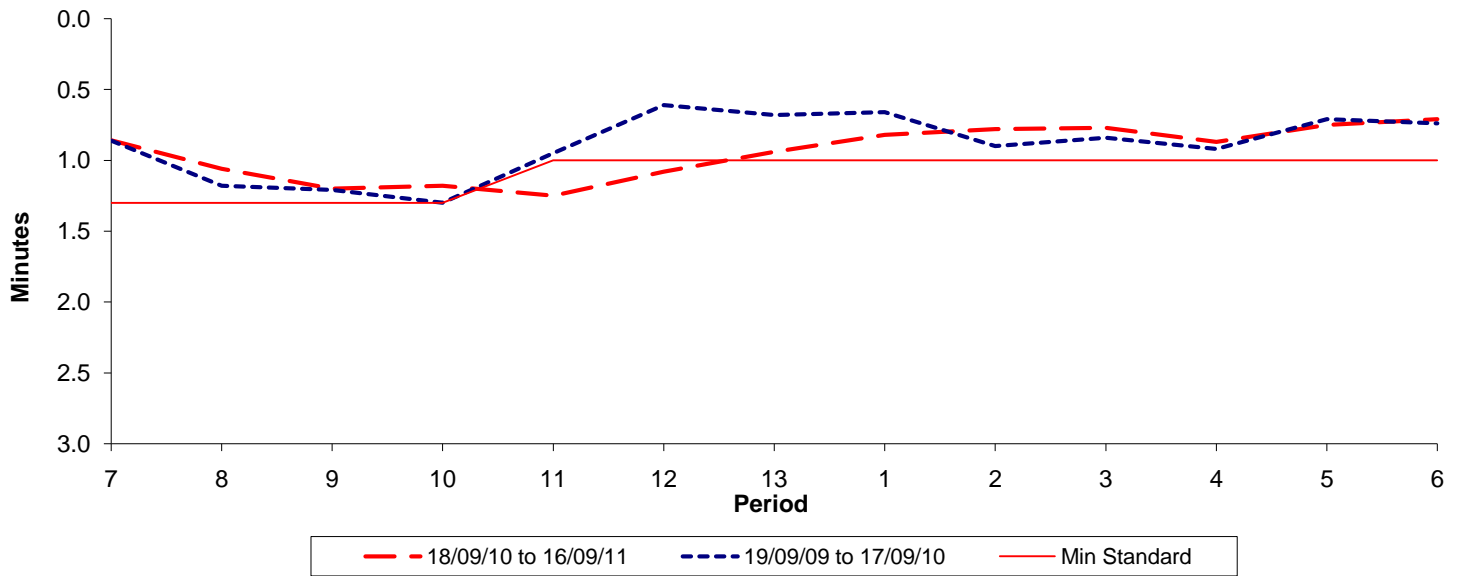




Reliability Performance (High Frequency)

Excess Waiting Time (minutes)

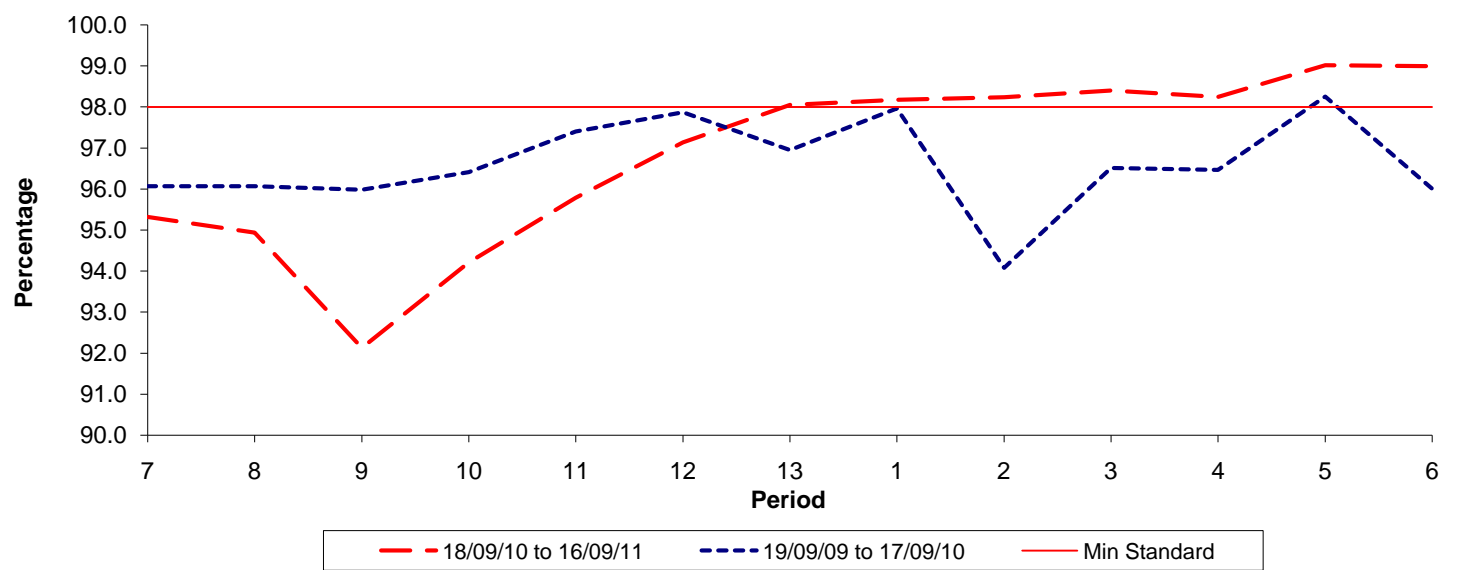


Date Range / Period	7	8	9	10	11	12	13	1	2	3	4	5	6
18/09/10 to 16/09/11	0.86	1.06	1.20	1.18	1.25	1.08	0.94	0.82	0.78	0.77	0.87	0.75	0.71
19/09/09 to 17/09/10	0.86	1.18	1.21	1.30	0.95	0.61	0.68	0.66	0.90	0.84	0.92	0.71	0.74
Min Standard	1.30	1.30	1.30	1.30	1.00	1.00	1.00	1.00	1.00	1.00	1.00	1.00	1.00

Excess Waiting Time figures are based on 12 weeks data

Kilometre Performance

% Kilometres Operated



Date Range / Period	7	8	9	10	11	12	13	1	2	3	4	5	6
18/09/10 to 16/09/11	95.32	94.94	92.13	94.21	95.79	97.14	98.05	98.18	98.24	98.40	98.25	99.02	99.00
19/09/09 to 17/09/10	96.06	96.06	95.98	96.41	97.40	97.87	96.95	97.96	94.08	96.51	96.47	98.25	96.00
Min Standard	98.00	98.00	98.00	98.00	98.00	98.00	98.00	98.00	98.00	98.00	98.00	98.00	98.00

Kilometre figures are based on 4 weeks data