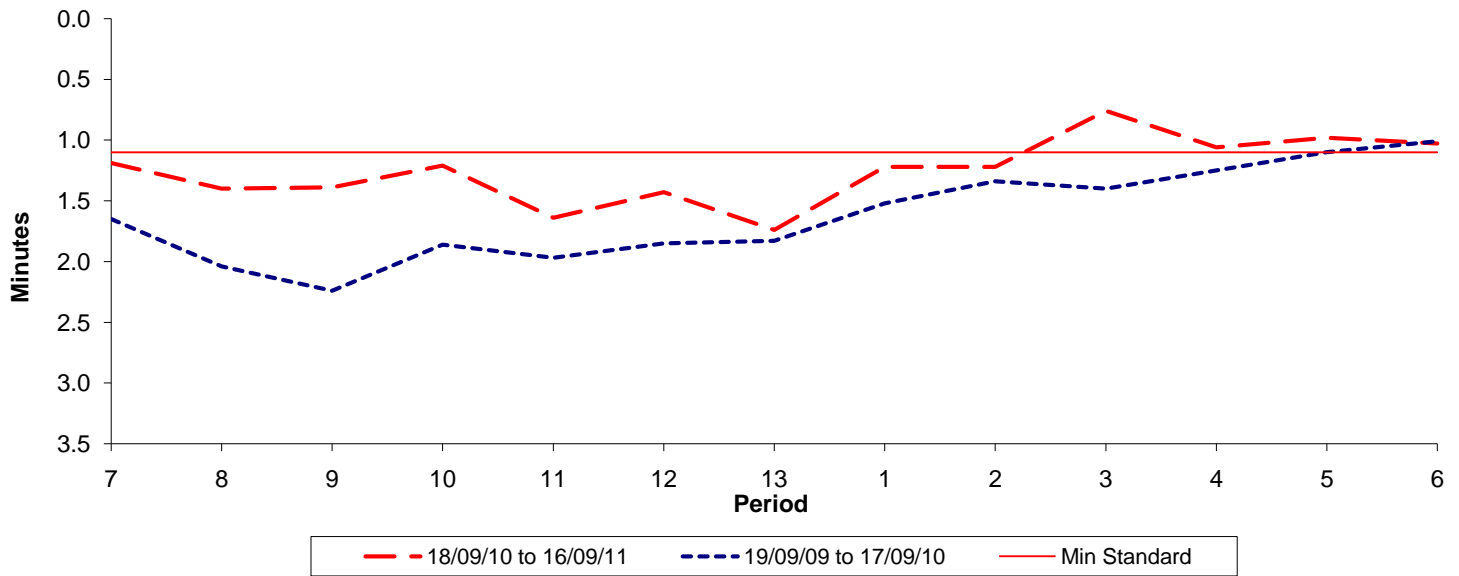




Reliability Performance (High Frequency)

Excess Waiting Time (minutes)

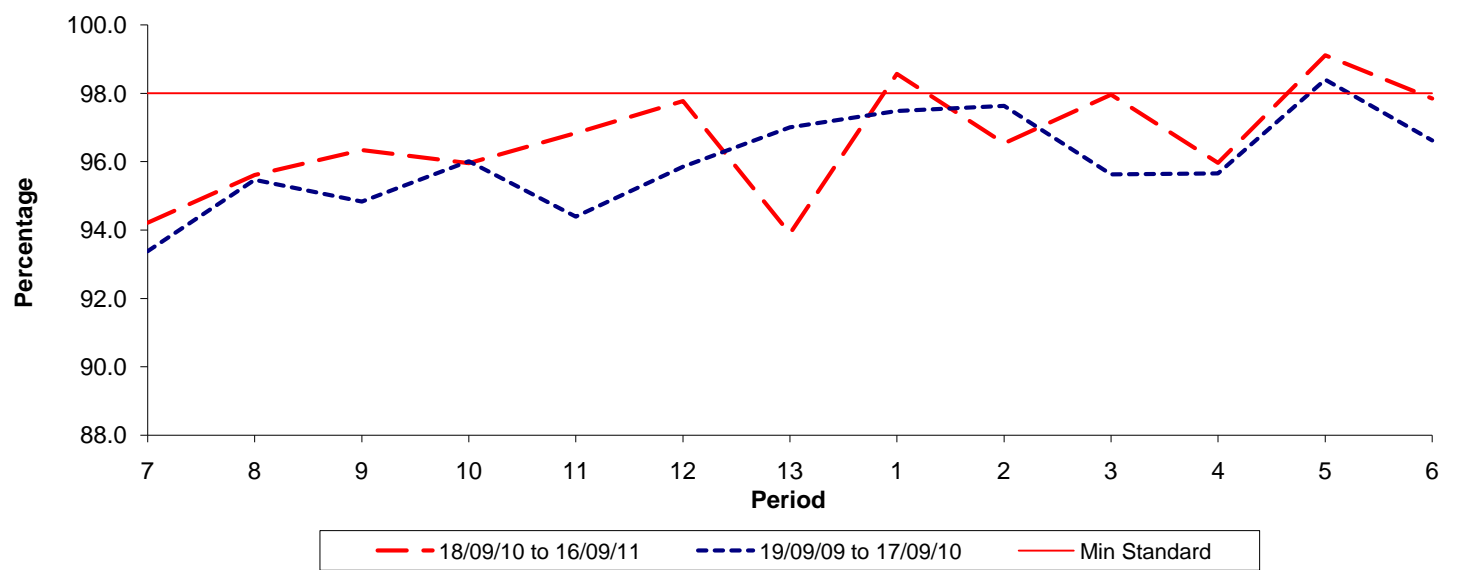


Date Range / Period	7	8	9	10	11	12	13	1	2	3	4	5	6
18/09/10 to 16/09/11	1.19	1.40	1.39	1.21	1.64	1.43	1.74	1.22	1.22	0.76	1.06	0.98	1.03
19/09/09 to 17/09/10	1.65	2.04	2.24	1.86	1.97	1.85	1.83	1.52	1.34	1.40	1.25	1.10	1.01
Min Standard	1.10	1.10	1.10	1.10	1.10	1.10	1.10	1.10	1.10	1.10	1.10	1.10	1.10

Excess Waiting Time figures are based on 12 weeks data

Kilometre Performance

% Kilometres Operated



Date Range / Period	7	8	9	10	11	12	13	1	2	3	4	5	6
18/09/10 to 16/09/11	94.22	95.61	96.34	95.96	96.84	97.77	93.90	98.57	96.54	97.96	95.97	99.11	97.85
19/09/09 to 17/09/10	93.38	95.47	94.83	96.01	94.39	95.85	97.00	97.48	97.63	95.63	95.66	98.40	96.62
Min Standard	98.00	98.00	98.00	98.00	98.00	98.00	98.00	98.00	98.00	98.00	98.00	98.00	98.00

Kilometre figures are based on 4 weeks data