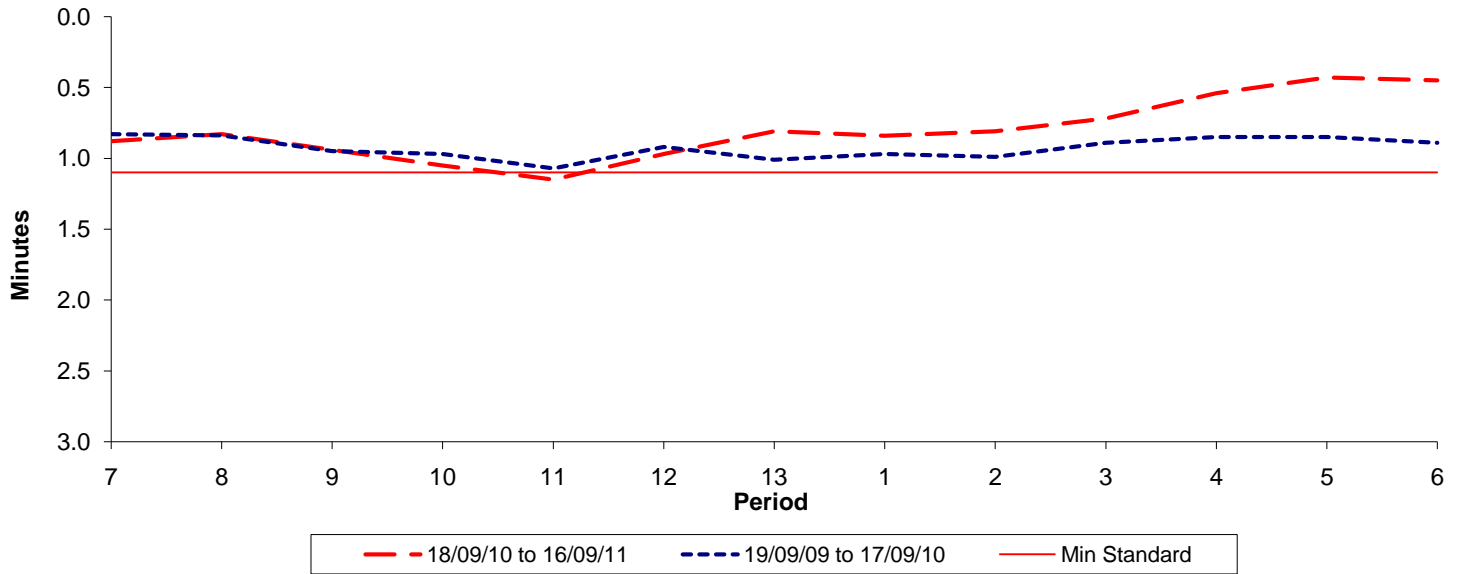




**Reliability Performance ( High Frequency )**

Excess Waiting Time (minutes)

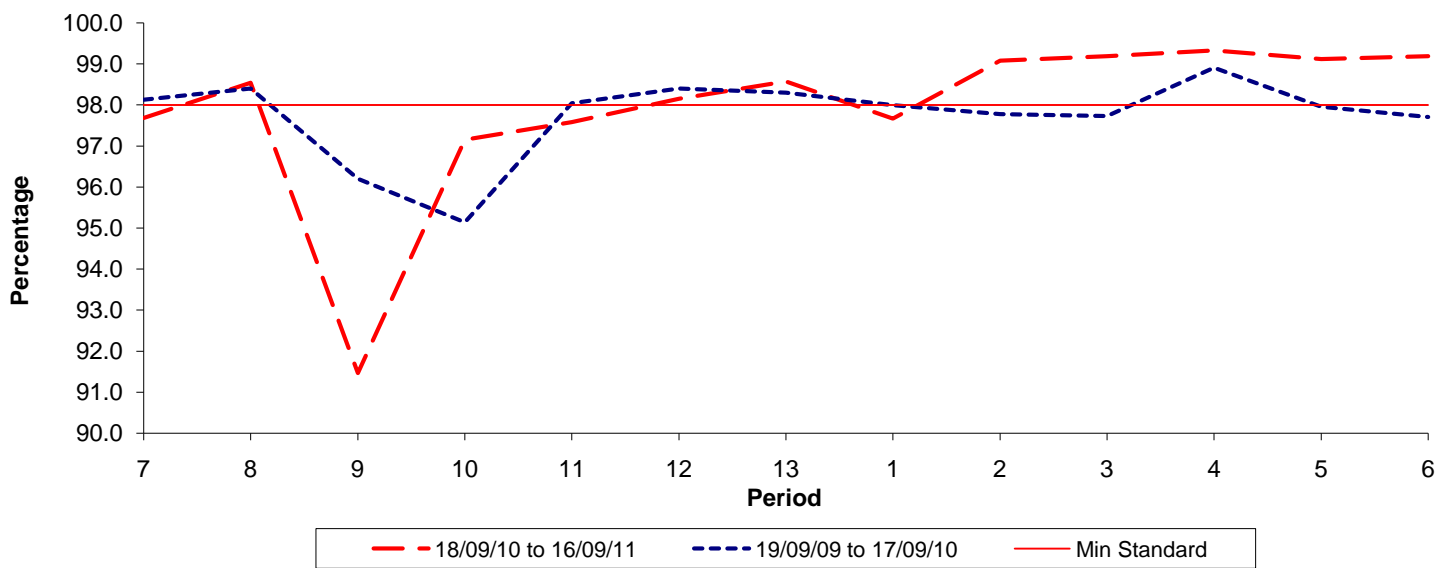


Date Range / Period	7	8	9	10	11	12	13	1	2	3	4	5	6
18/09/10 to 16/09/11	0.88	0.83	0.94	1.05	1.15	0.97	0.81	0.84	0.81	0.72	0.54	0.43	0.45
19/09/09 to 17/09/10	0.83	0.84	0.95	0.97	1.07	0.92	1.01	0.97	0.99	0.89	0.85	0.85	0.89
Min Standard	1.10	1.10	1.10	1.10	1.10	1.10	1.10	1.10	1.10	1.10	1.10	1.10	1.10

Excess Waiting Time figures are based on 12 weeks data

**Kilometre Performance**

% Kilometres Operated



Date Range / Period	7	8	9	10	11	12	13	1	2	3	4	5	6
18/09/10 to 16/09/11	97.68	98.54	91.46	97.15	97.58	98.15	98.57	97.67	99.08	99.19	99.33	99.12	99.19
19/09/09 to 17/09/10	98.13	98.40	96.20	95.14	98.04	98.40	98.30	98.00	97.78	97.73	98.91	97.96	97.71
Min Standard	98.00	98.00	98.00	98.00	98.00	98.00	98.00	98.00	98.00	98.00	98.00	98.00	98.00

Kilometre figures are based on 4 weeks data