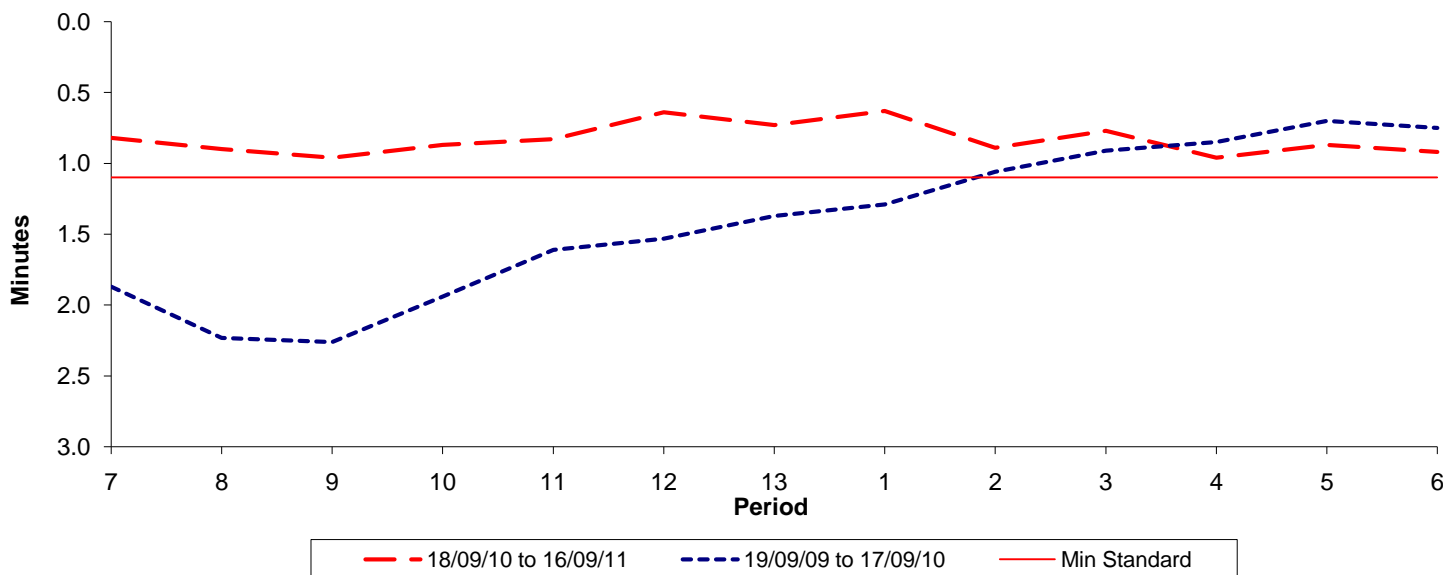




Reliability Performance (High Frequency)

Excess Waiting Time (minutes)

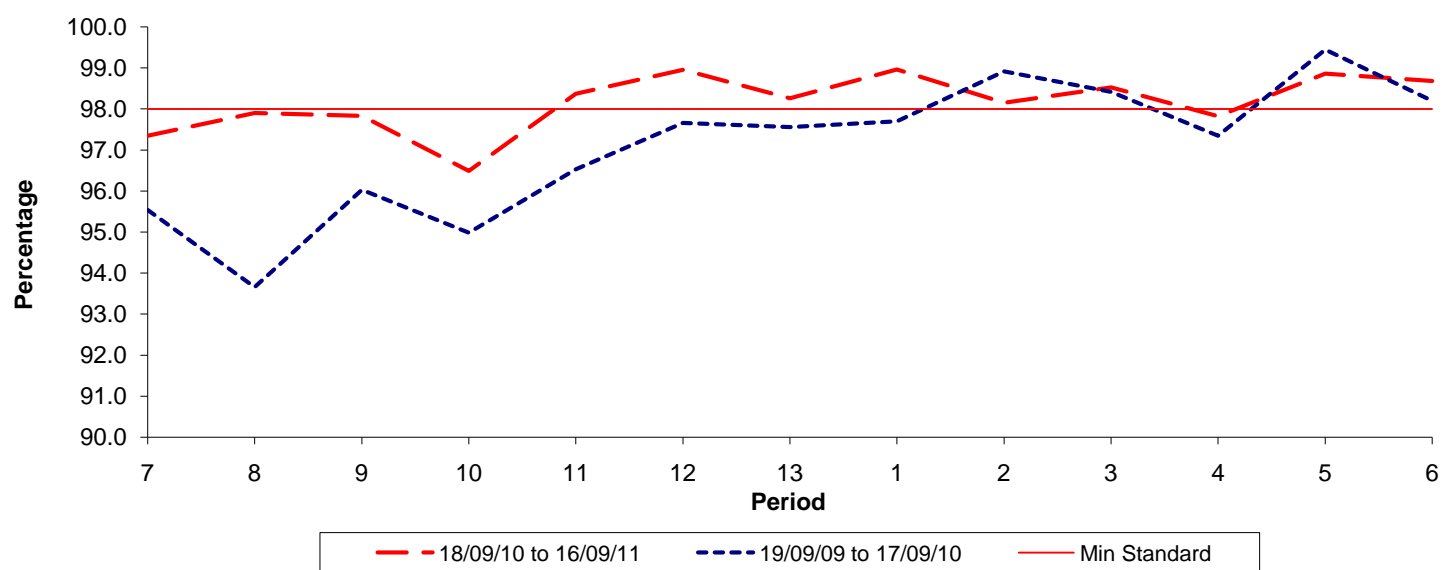


Date Range / Period	7	8	9	10	11	12	13	1	2	3	4	5	6
18/09/10 to 16/09/11	0.82	0.90	0.96	0.87	0.83	0.64	0.73	0.63	0.89	0.77	0.96	0.87	0.92
19/09/09 to 17/09/10	1.87	2.23	2.26	1.94	1.61	1.53	1.37	1.29	1.06	0.91	0.85	0.70	0.75
Min Standard	1.10	1.10	1.10	1.10	1.10	1.10	1.10	1.10	1.10	1.10	1.10	1.10	1.10

Excess Waiting Time figures are based on 12 weeks data

Kilometre Performance

% Kilometres Operated



Date Range / Period	7	8	9	10	11	12	13	1	2	3	4	5	6
18/09/10 to 16/09/11	97.35	97.90	97.83	96.49	98.37	98.95	98.26	98.96	98.15	98.52	97.82	98.86	98.68
19/09/09 to 17/09/10	95.54	93.66	96.03	94.99	96.53	97.66	97.56	97.70	98.92	98.42	97.35	99.45	98.20
Min Standard	98.00	98.00	98.00	98.00	98.00	98.00	98.00	98.00	98.00	98.00	98.00	98.00	98.00

Kilometre figures are based on 4 weeks data