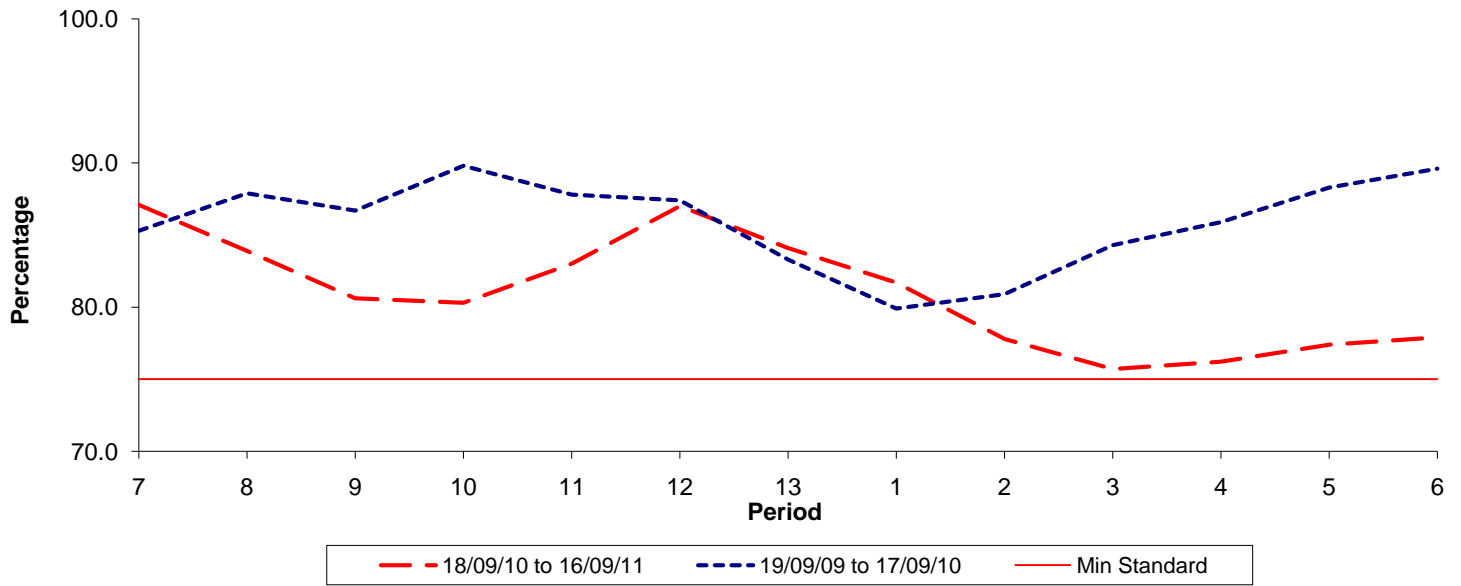




**Reliability Performance ( Low Frequency )**

**% Departing On Time**

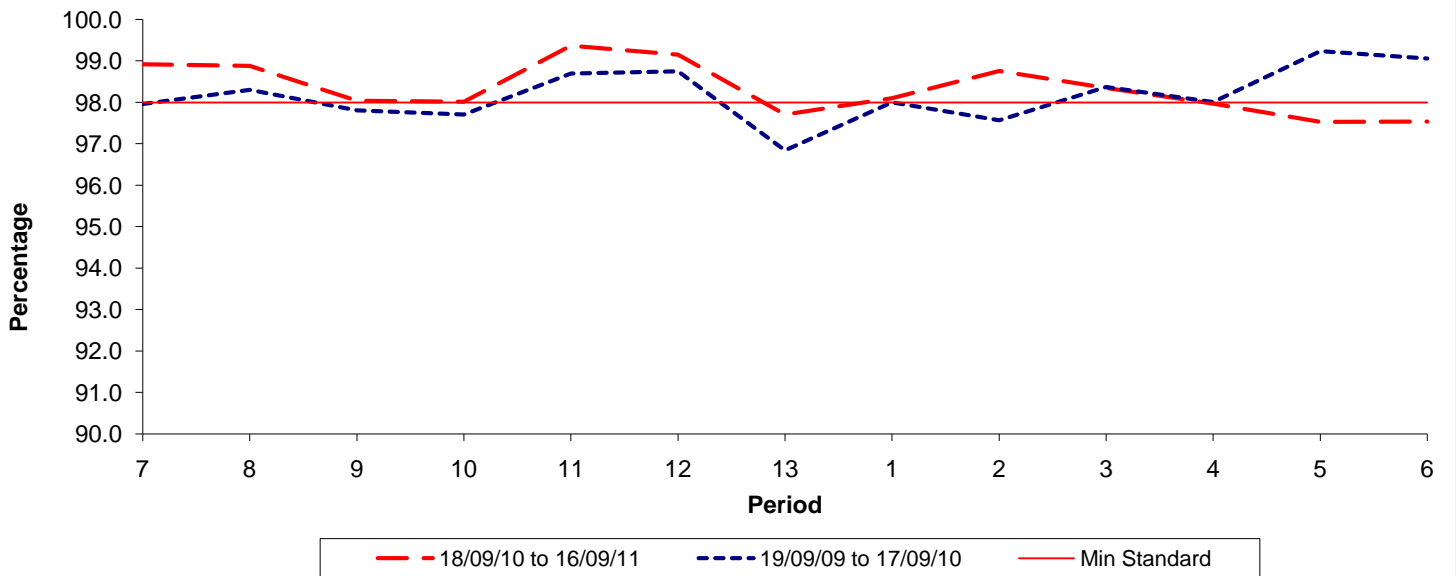


Date Range / Period	7	8	9	10	11	12	13	1	2	3	4	5	6
18/09/10 to 16/09/11	87.10	83.90	80.60	80.30	83.00	87.00	84.10	81.70	77.80	75.70	76.20	77.40	77.90
19/09/09 to 17/09/10	85.30	87.90	86.70	89.80	87.80	87.40	83.30	79.90	80.90	84.30	85.90	88.30	89.60
Min Standard	75.00	75.00	75.00	75.00	75.00	75.00	75.00	75.00	75.00	75.00	75.00	75.00	75.00

On Time figures are based on 12 weeks data

**Kilometre Performance**

**% Kilometres Operated**



Date Range / Period	7	8	9	10	11	12	13	1	2	3	4	5	6
18/09/10 to 16/09/11	98.92	98.88	98.04	98.02	99.37	99.15	97.71	98.10	98.76	98.35	97.97	97.53	97.54
19/09/09 to 17/09/10	97.96	98.30	97.81	97.71	98.70	98.75	96.84	98.00	97.57	98.37	98.01	99.24	99.06
Min Standard	98.00	98.00	98.00	98.00	98.00	98.00	98.00	98.00	98.00	98.00	98.00	98.00	98.00

Kilometre figures are based on 4 weeks data