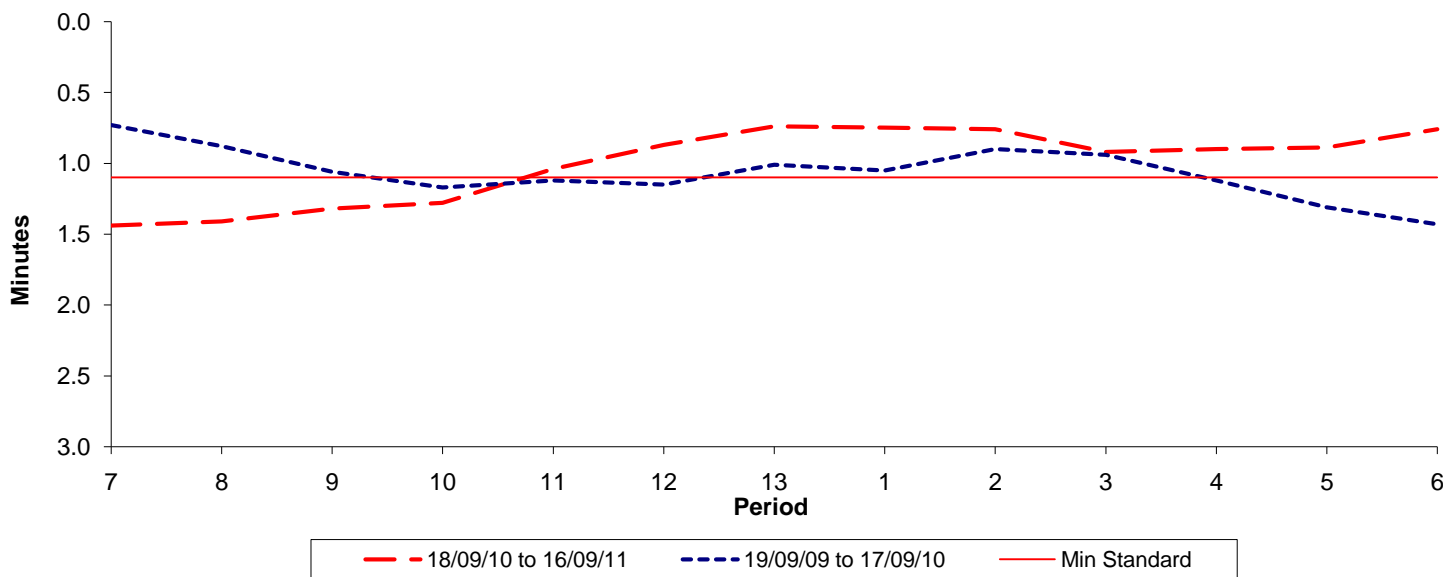




Reliability Performance (High Frequency)

Excess Waiting Time (minutes)

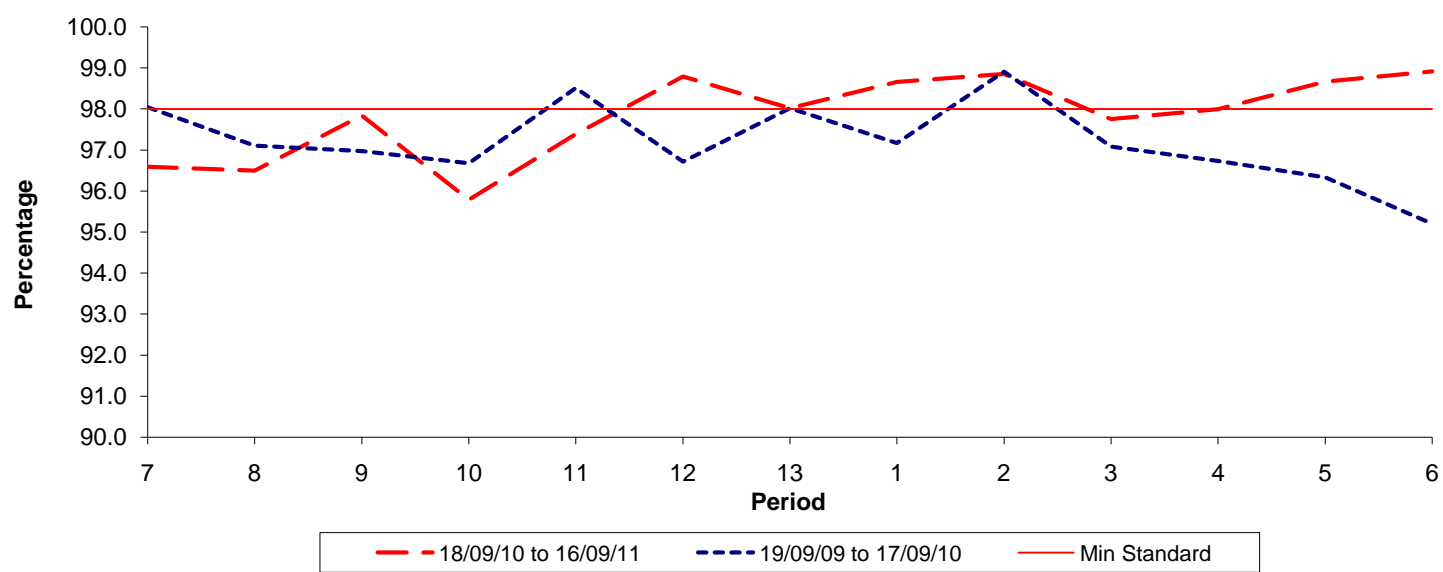


Date Range / Period	7	8	9	10	11	12	13	1	2	3	4	5	6
18/09/10 to 16/09/11	1.44	1.41	1.32	1.28	1.04	0.87	0.74	0.75	0.76	0.92	0.90	0.89	0.76
19/09/09 to 17/09/10	0.73	0.88	1.06	1.17	1.12	1.15	1.01	1.05	0.90	0.94	1.12	1.31	1.43
Min Standard	1.10	1.10	1.10	1.10	1.10	1.10	1.10	1.10	1.10	1.10	1.10	1.10	1.10

Excess Waiting Time figures are based on 12 weeks data

Kilometre Performance

% Kilometres Operated



Date Range / Period	7	8	9	10	11	12	13	1	2	3	4	5	6
18/09/10 to 16/09/11	96.60	96.50	97.84	95.79	97.39	98.80	98.02	98.66	98.86	97.76	98.00	98.67	98.92
19/09/09 to 17/09/10	98.05	97.11	96.97	96.68	98.51	96.72	98.02	97.17	98.91	97.08	96.73	96.33	95.20
Min Standard	98.00	98.00	98.00	98.00	98.00	98.00	98.00	98.00	98.00	98.00	98.00	98.00	98.00

Kilometre figures are based on 4 weeks data