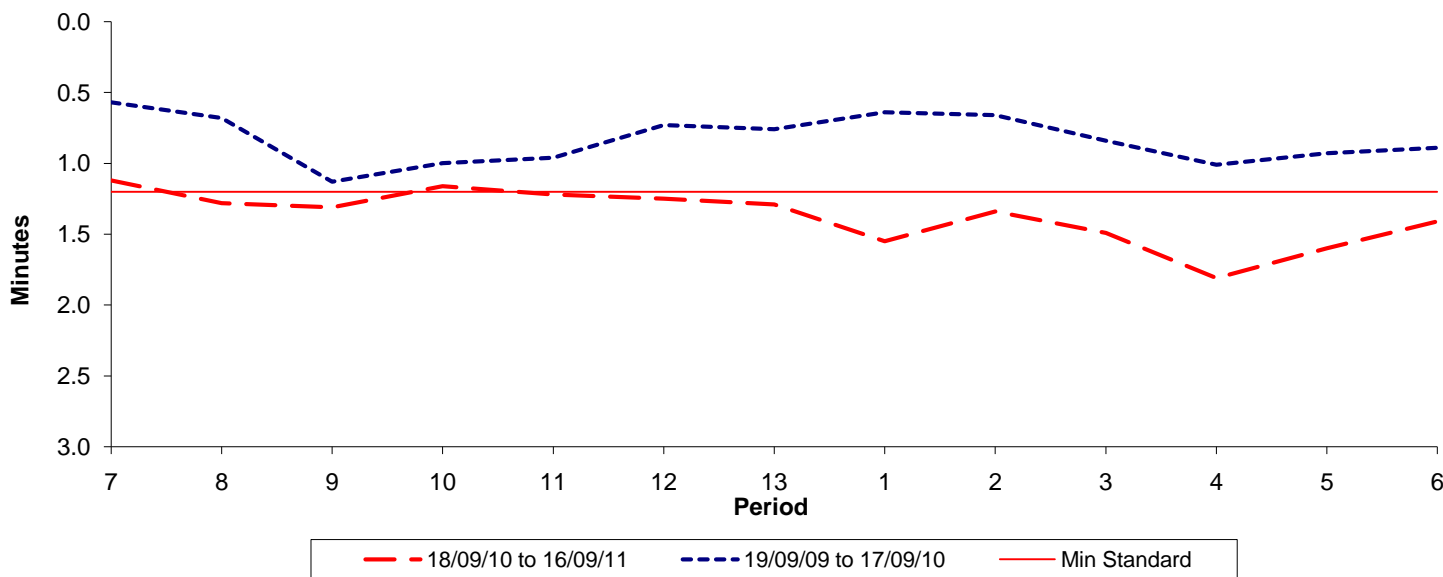




Reliability Performance (High Frequency)

Excess Waiting Time (minutes)

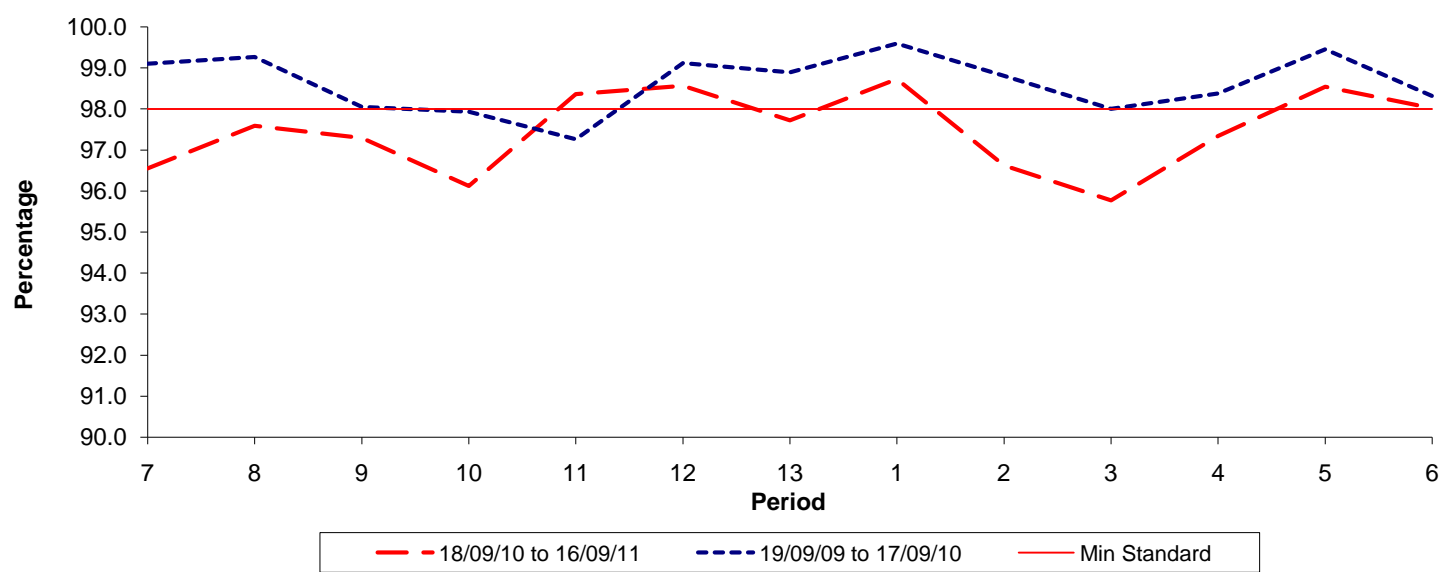


Date Range / Period	7	8	9	10	11	12	13	1	2	3	4	5	6
18/09/10 to 16/09/11	1.12	1.28	1.31	1.16	1.22	1.25	1.29	1.55	1.34	1.49	1.81	1.60	1.41
19/09/09 to 17/09/10	0.57	0.68	1.13	1.00	0.96	0.73	0.76	0.64	0.66	0.84	1.01	0.93	0.89
Min Standard	1.20	1.20	1.20	1.20	1.20	1.20	1.20	1.20	1.20	1.20	1.20	1.20	1.20

Excess Waiting Time figures are based on 12 weeks data

Kilometre Performance

% Kilometres Operated



Date Range / Period	7	8	9	10	11	12	13	1	2	3	4	5	6
18/09/10 to 16/09/11	96.55	97.59	97.29	96.12	98.36	98.57	97.72	98.73	96.62	95.77	97.34	98.54	98.02
19/09/09 to 17/09/10	99.11	99.27	98.05	97.93	97.26	99.12	98.89	99.60	98.81	98.00	98.38	99.46	98.32
Min Standard	98.00	98.00	98.00	98.00	98.00	98.00	98.00	98.00	98.00	98.00	98.00	98.00	98.00

Kilometre figures are based on 4 weeks data