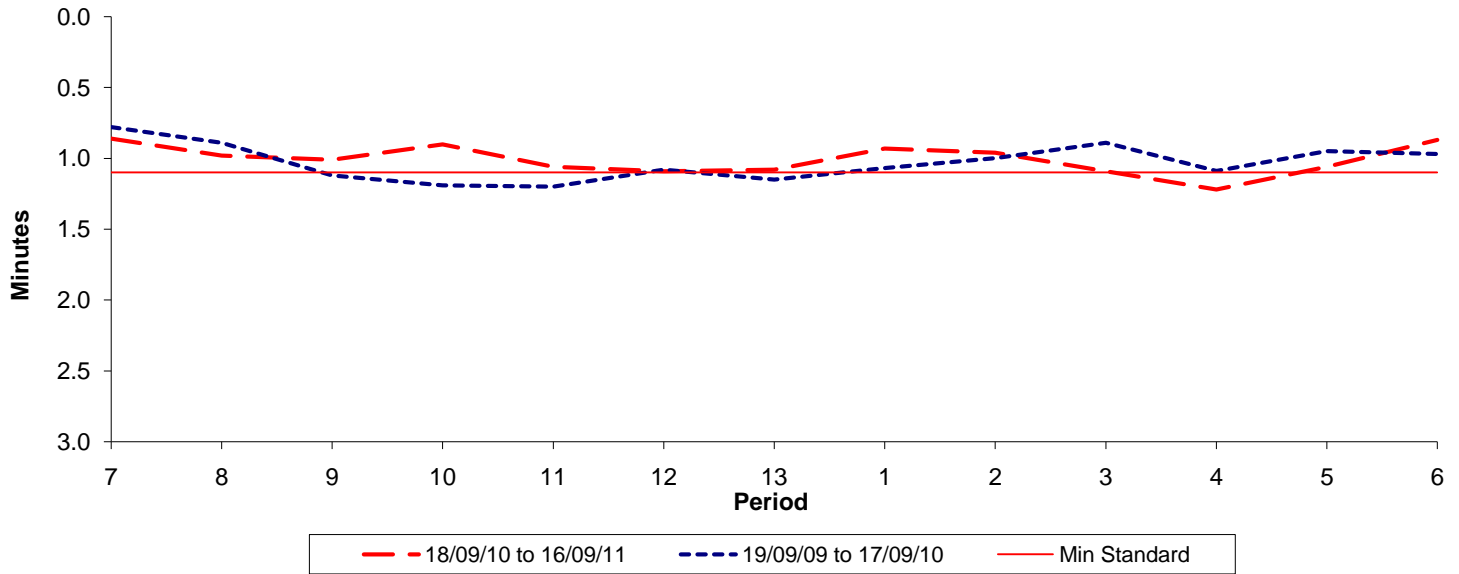




**Reliability Performance ( High Frequency )**

**Excess Waiting Time (minutes)**

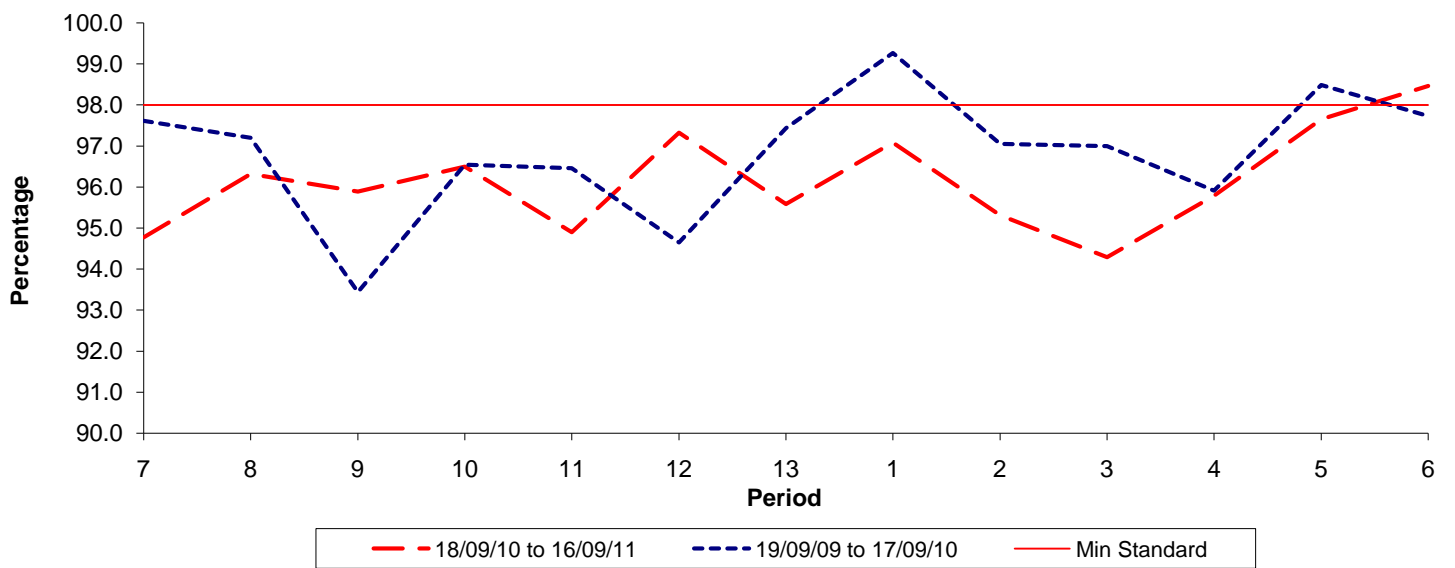


Date Range / Period	7	8	9	10	11	12	13	1	2	3	4	5	6
18/09/10 to 16/09/11	0.86	0.98	1.01	0.90	1.06	1.09	1.08	0.93	0.96	1.09	1.22	1.06	0.87
19/09/09 to 17/09/10	0.78	0.89	1.12	1.19	1.20	1.08	1.15	1.07	1.00	0.89	1.09	0.95	0.97
Min Standard	1.10	1.10	1.10	1.10	1.10	1.10	1.10	1.10	1.10	1.10	1.10	1.10	1.10

Excess Waiting Time figures are based on 12 weeks data

**Kilometre Performance**

**% Kilometres Operated**



Date Range / Period	7	8	9	10	11	12	13	1	2	3	4	5	6
18/09/10 to 16/09/11	94.77	96.32	95.89	96.50	94.90	97.32	95.58	97.08	95.31	94.29	95.79	97.65	98.46
19/09/09 to 17/09/10	97.62	97.20	93.44	96.54	96.46	94.65	97.44	99.27	97.05	97.00	95.92	98.49	97.74
Min Standard	98.00	98.00	98.00	98.00	98.00	98.00	98.00	98.00	98.00	98.00	98.00	98.00	98.00

Kilometre figures are based on 4 weeks data