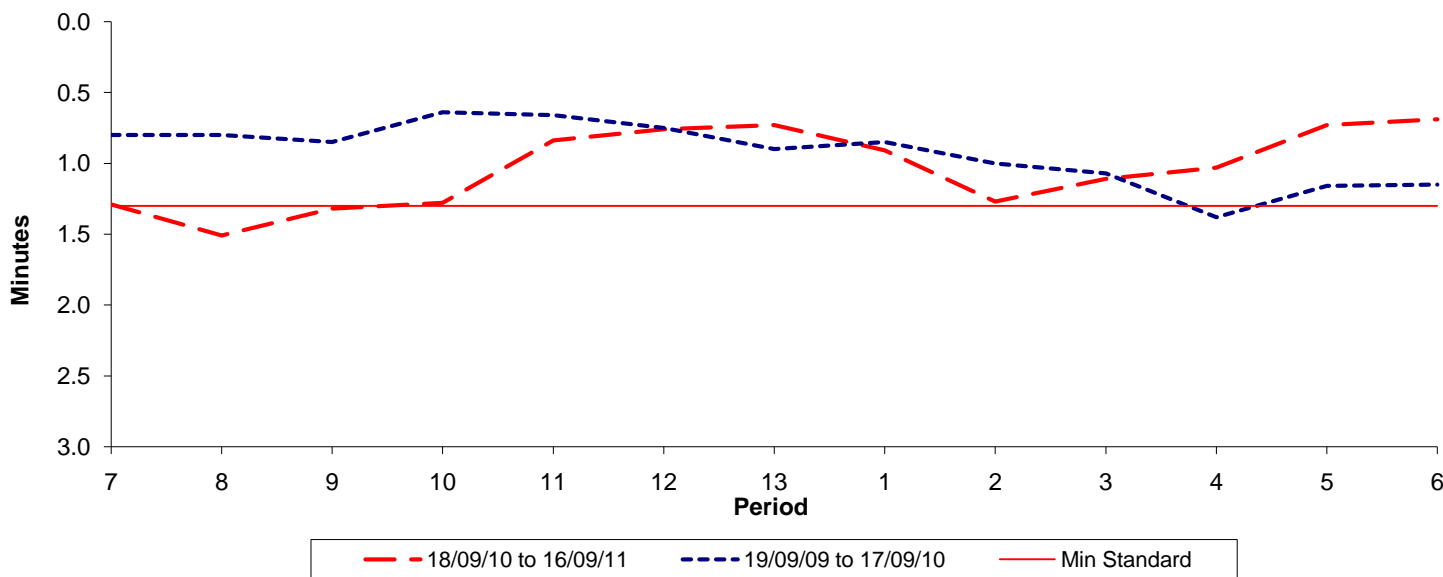




Reliability Performance (High Frequency)

Excess Waiting Time (minutes)

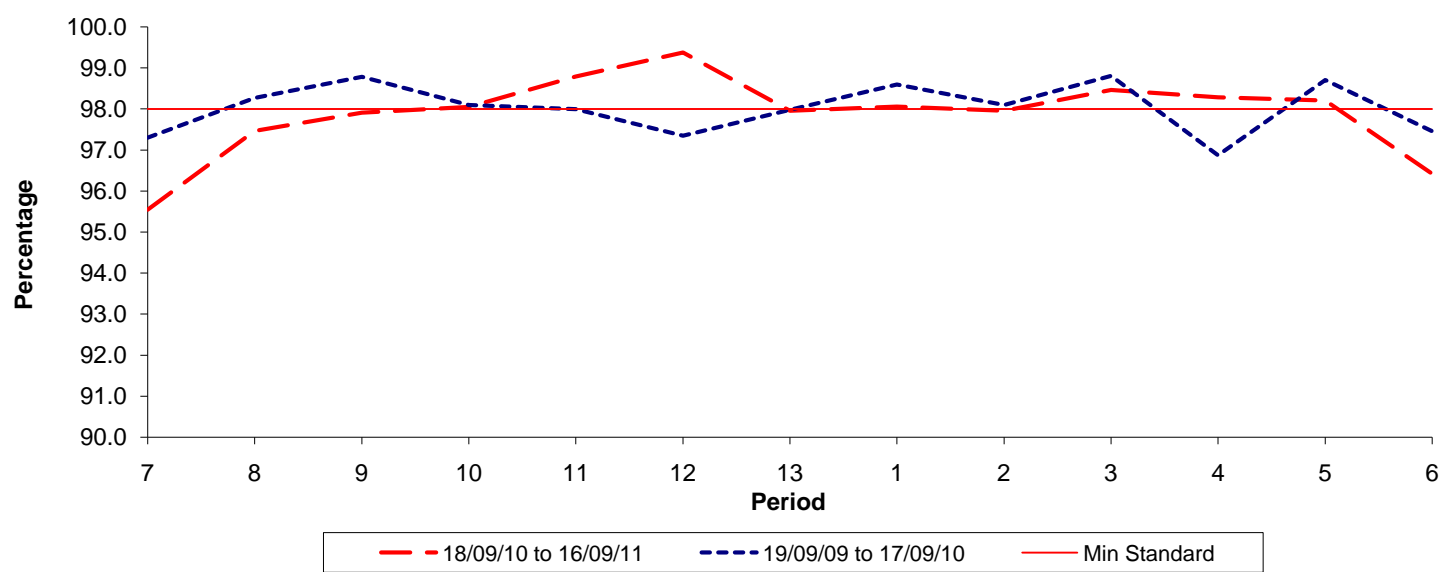


Date Range / Period	7	8	9	10	11	12	13	1	2	3	4	5	6
18/09/10 to 16/09/11	1.29	1.51	1.32	1.28	0.84	0.76	0.73	0.91	1.27	1.11	1.03	0.73	0.69
19/09/09 to 17/09/10	0.80	0.80	0.85	0.64	0.66	0.75	0.90	0.85	1.00	1.07	1.38	1.16	1.15
Min Standard	1.30	1.30	1.30	1.30	1.30	1.30	1.30	1.30	1.30	1.30	1.30	1.30	1.30

Excess Waiting Time figures are based on 12 weeks data

Kilometre Performance

% Kilometres Operated



Date Range / Period	7	8	9	10	11	12	13	1	2	3	4	5	6
18/09/10 to 16/09/11	95.55	97.47	97.91	98.05	98.79	99.38	97.96	98.06	97.96	98.47	98.29	98.21	96.42
19/09/09 to 17/09/10	97.30	98.27	98.78	98.09	98.00	97.35	97.98	98.60	98.10	98.81	96.87	98.71	97.46
Min Standard	98.00	98.00	98.00	98.00	98.00	98.00	98.00	98.00	98.00	98.00	98.00	98.00	98.00

Kilometre figures are based on 4 weeks data