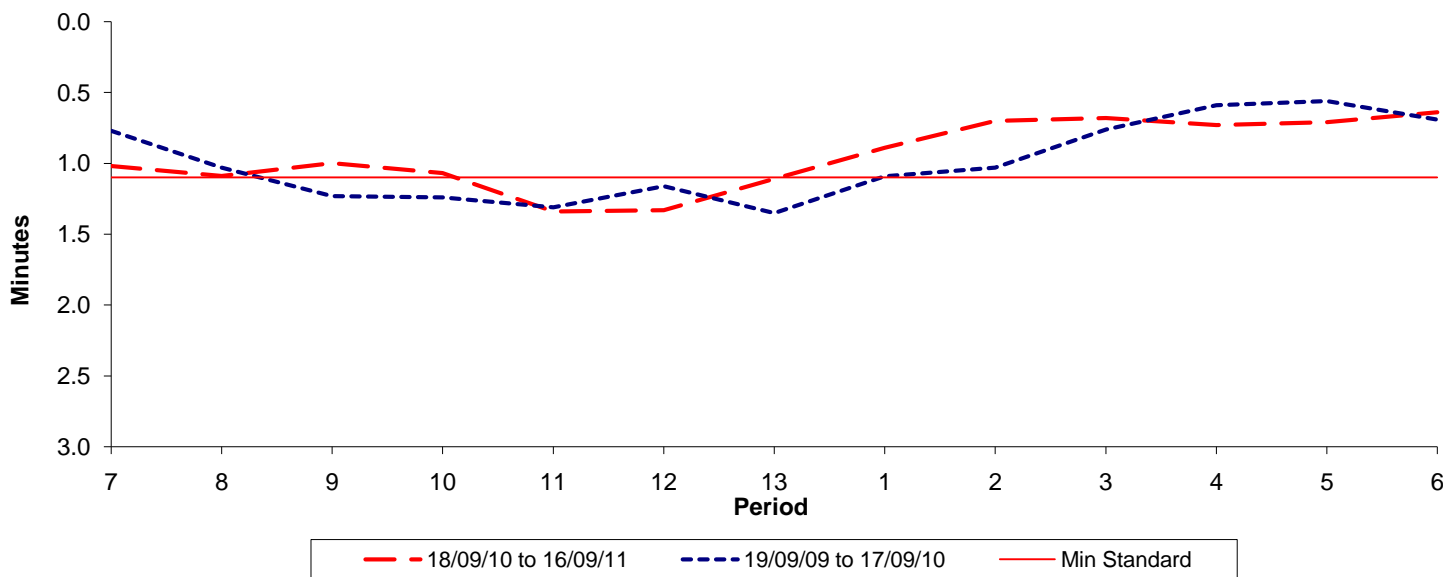




Reliability Performance (High Frequency)

Excess Waiting Time (minutes)

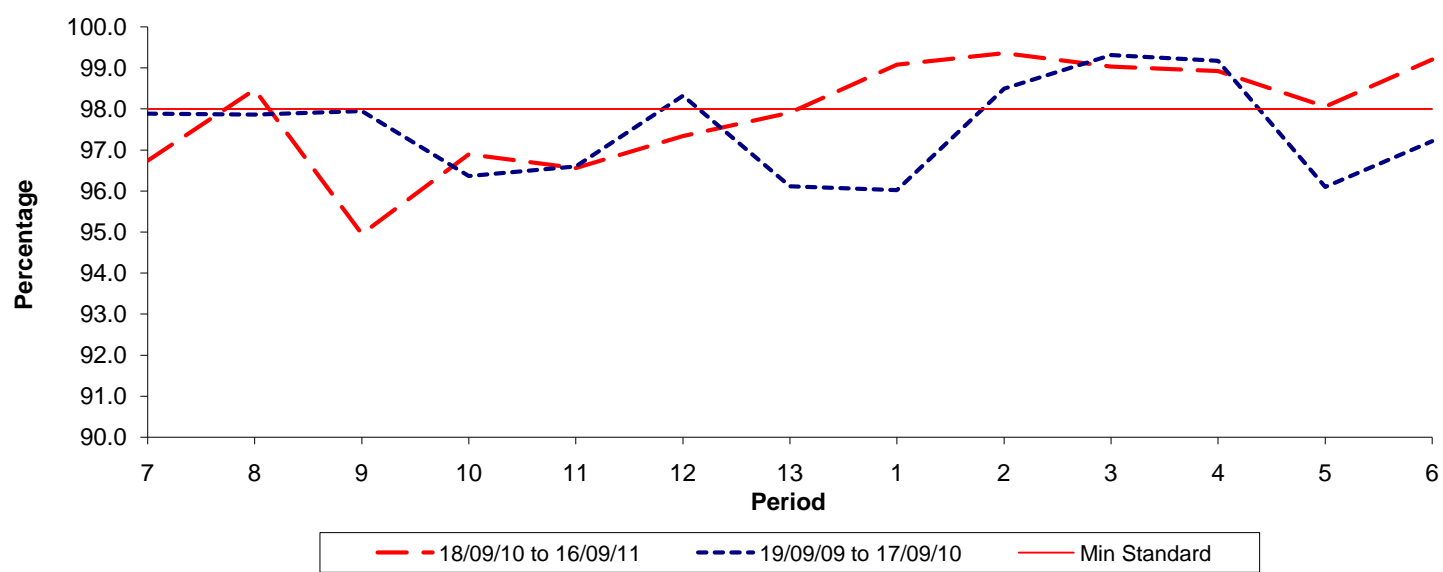


Date Range / Period	7	8	9	10	11	12	13	1	2	3	4	5	6
18/09/10 to 16/09/11	1.02	1.09	1.00	1.07	1.34	1.33	1.11	0.89	0.70	0.68	0.73	0.71	0.64
19/09/09 to 17/09/10	0.77	1.03	1.23	1.24	1.31	1.16	1.35	1.09	1.03	0.76	0.59	0.56	0.69
Min Standard	1.10	1.10	1.10	1.10	1.10	1.10	1.10	1.10	1.10	1.10	1.10	1.10	1.10

Excess Waiting Time figures are based on 12 weeks data

Kilometre Performance

% Kilometres Operated



Date Range / Period	7	8	9	10	11	12	13	1	2	3	4	5	6
18/09/10 to 16/09/11	96.74	98.47	94.95	96.89	96.56	97.34	97.91	99.08	99.36	99.03	98.92	98.06	99.20
19/09/09 to 17/09/10	97.89	97.86	97.95	96.36	96.60	98.32	96.11	96.02	98.49	99.31	99.18	96.10	97.22
Min Standard	98.00	98.00	98.00	98.00	98.00	98.00	98.00	98.00	98.00	98.00	98.00	98.00	98.00

Kilometre figures are based on 4 weeks data