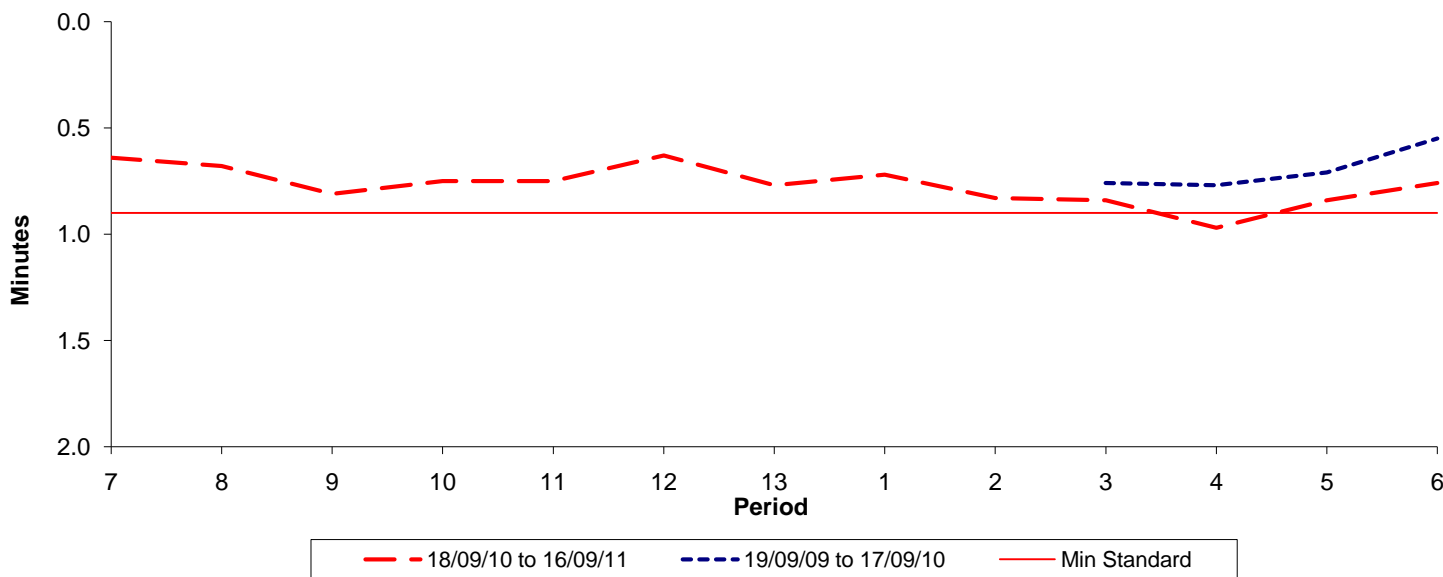




Reliability Performance (High Frequency)

Excess Waiting Time (minutes)

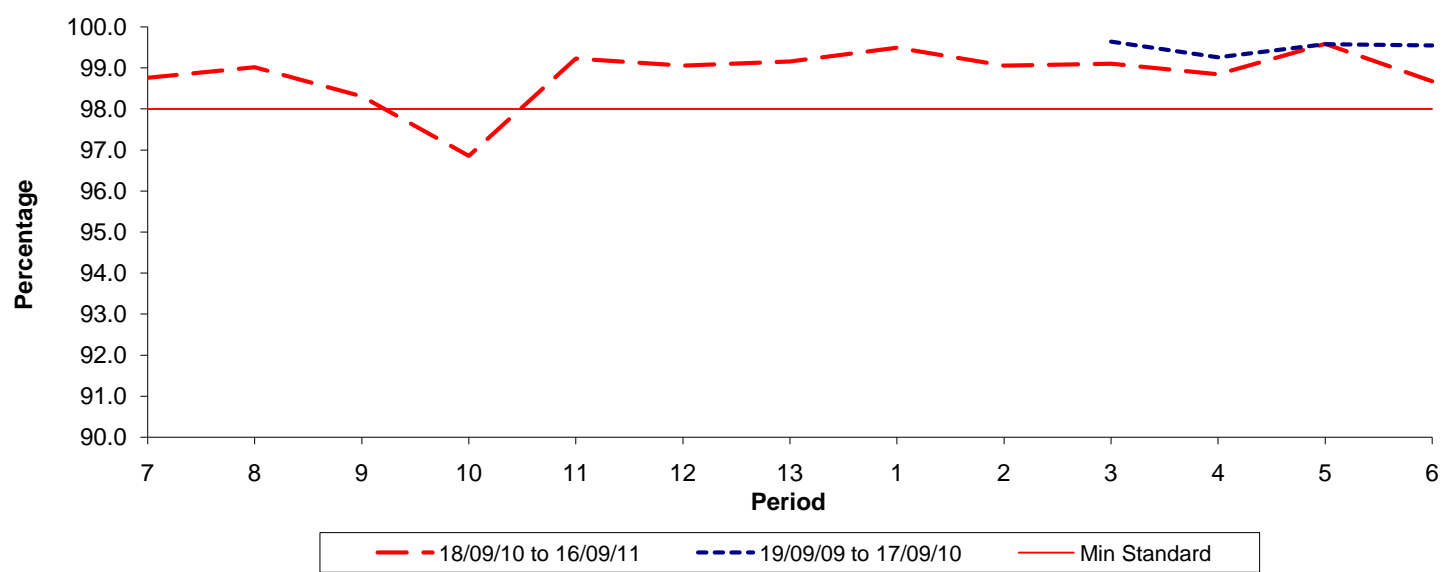


Date Range / Period	7	8	9	10	11	12	13	1	2	3	4	5	6
18/09/10 to 16/09/11	0.64	0.68	0.81	0.75	0.75	0.63	0.77	0.72	0.83	0.84	0.97	0.84	0.76
19/09/09 to 17/09/10										0.76	0.77	0.71	0.55
Min Standard	0.90	0.90	0.90	0.90	0.90	0.90	0.90	0.90	0.90	0.90	0.90	0.90	0.90

Excess Waiting Time figures are based on 12 weeks data

Kilometre Performance

% Kilometres Operated



Date Range / Period	7	8	9	10	11	12	13	1	2	3	4	5	6
18/09/10 to 16/09/11	98.76	99.02	98.31	96.86	99.23	99.06	99.16	99.50	99.06	99.11	98.85	99.59	98.68
19/09/09 to 17/09/10										99.64	99.26	99.58	99.55
Min Standard	98.00	98.00	98.00	98.00	98.00	98.00	98.00	98.00	98.00	98.00	98.00	98.00	98.00

Kilometre figures are based on 4 weeks data