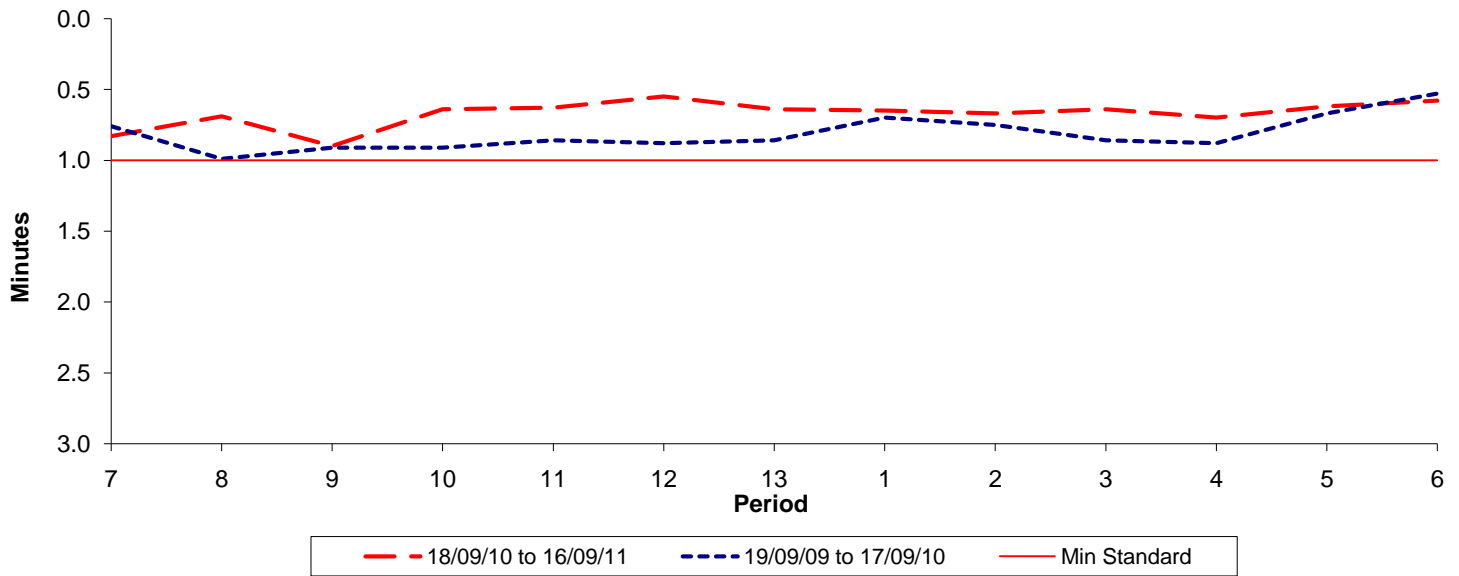




Reliability Performance (High Frequency)

Excess Waiting Time (minutes)

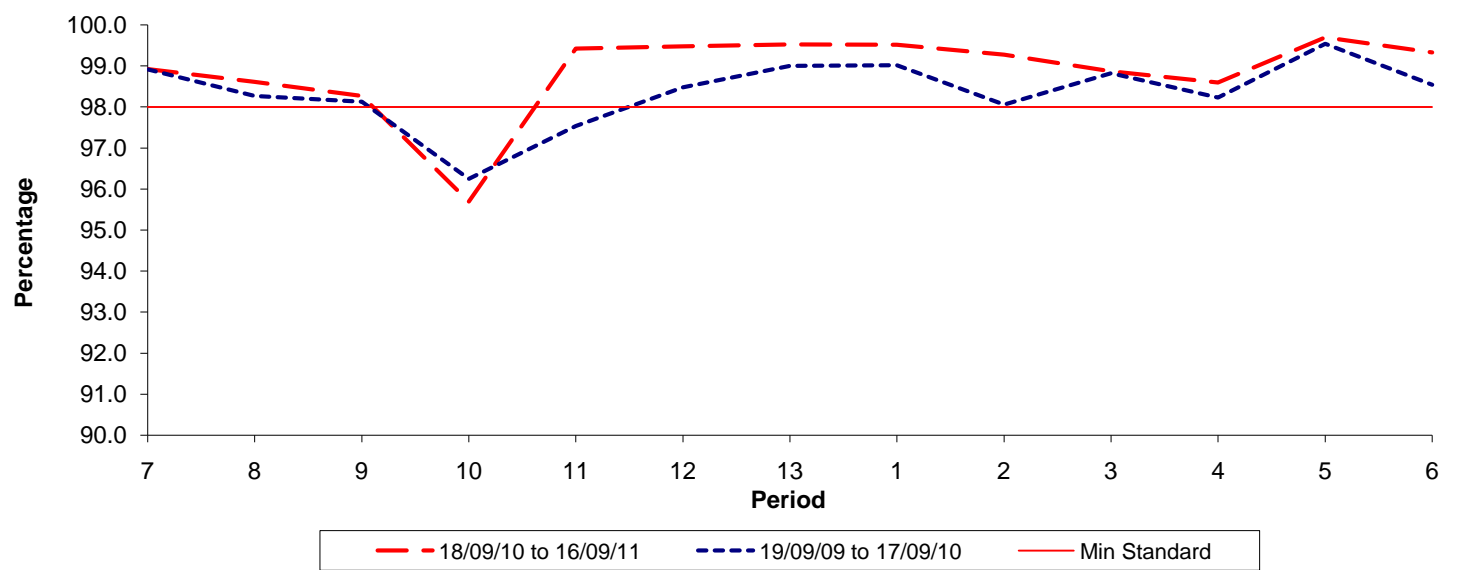


Date Range / Period	7	8	9	10	11	12	13	1	2	3	4	5	6
18/09/10 to 16/09/11	0.83	0.69	0.90	0.64	0.63	0.55	0.64	0.65	0.67	0.64	0.70	0.62	0.58
19/09/09 to 17/09/10	0.76	0.99	0.91	0.91	0.86	0.88	0.86	0.70	0.75	0.86	0.88	0.67	0.53
Min Standard	1.00	1.00	1.00	1.00	1.00	1.00	1.00	1.00	1.00	1.00	1.00	1.00	1.00

Excess Waiting Time figures are based on 12 weeks data

Kilometre Performance

% Kilometres Operated



Date Range / Period	7	8	9	10	11	12	13	1	2	3	4	5	6
18/09/10 to 16/09/11	98.93	98.61	98.27	95.69	99.43	99.48	99.53	99.52	99.28	98.87	98.60	99.70	99.33
19/09/09 to 17/09/10	98.92	98.27	98.13	96.25	97.54	98.48	99.00	99.02	98.06	98.82	98.23	99.54	98.54
Min Standard	98.00	98.00	98.00	98.00	98.00	98.00	98.00	98.00	98.00	98.00	98.00	98.00	98.00

Kilometre figures are based on 4 weeks data