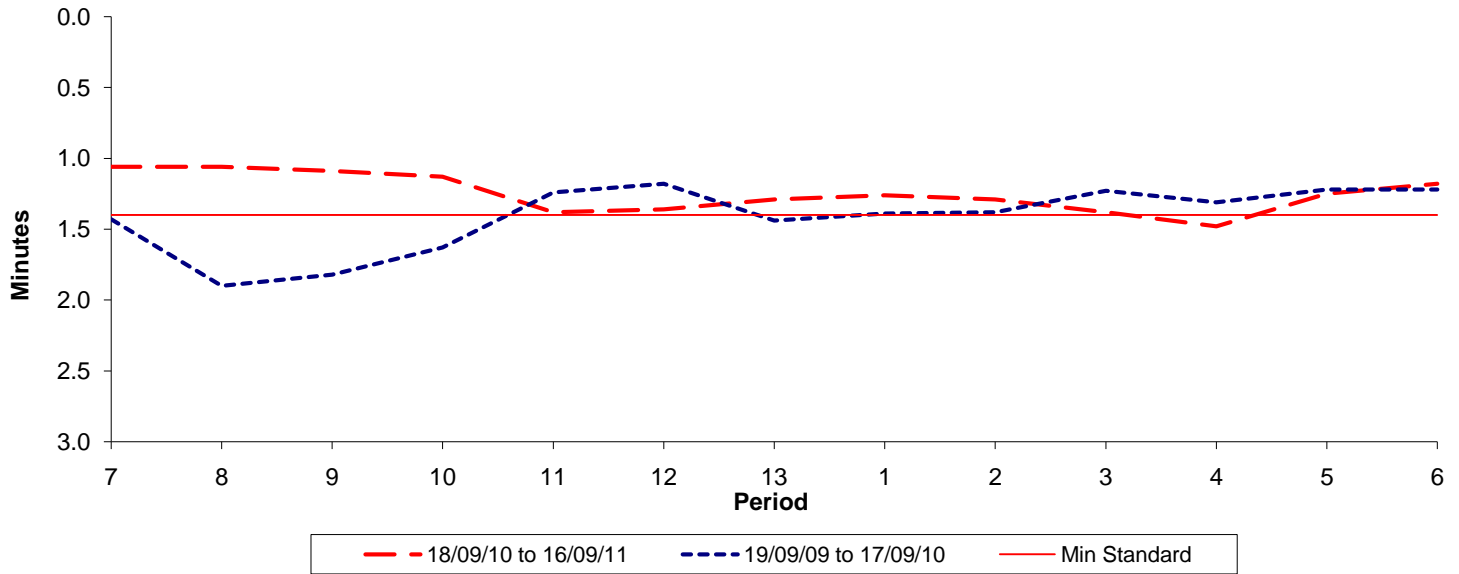




**Reliability Performance ( High Frequency )**

**Excess Waiting Time (minutes)**

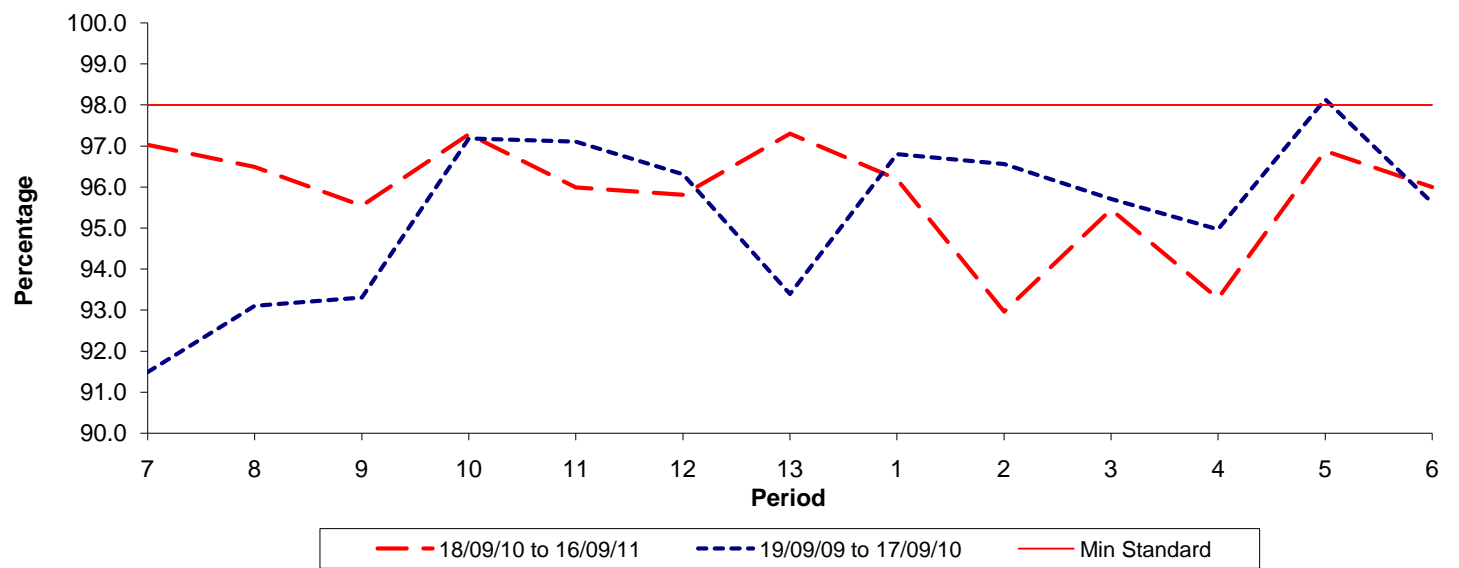


Date Range / Period	7	8	9	10	11	12	13	1	2	3	4	5	6
18/09/10 to 16/09/11	1.06	1.06	1.09	1.13	1.38	1.36	1.29	1.26	1.29	1.38	1.48	1.25	1.18
19/09/09 to 17/09/10	1.43	1.90	1.82	1.63	1.24	1.18	1.44	1.39	1.38	1.23	1.31	1.22	1.22
Min Standard	1.40	1.40	1.40	1.40	1.40	1.40	1.40	1.40	1.40	1.40	1.40	1.40	1.40

Excess Waiting Time figures are based on 12 weeks data

**Kilometre Performance**

**% Kilometres Operated**



Date Range / Period	7	8	9	10	11	12	13	1	2	3	4	5	6
18/09/10 to 16/09/11	97.03	96.49	95.54	97.28	95.99	95.81	97.30	96.19	92.96	95.45	93.28	96.88	96.00
19/09/09 to 17/09/10	91.49	93.10	93.30	97.18	97.10	96.31	93.39	96.80	96.56	95.71	94.97	98.13	95.61
Min Standard	98.00	98.00	98.00	98.00	98.00	98.00	98.00	98.00	98.00	98.00	98.00	98.00	98.00

Kilometre figures are based on 4 weeks data