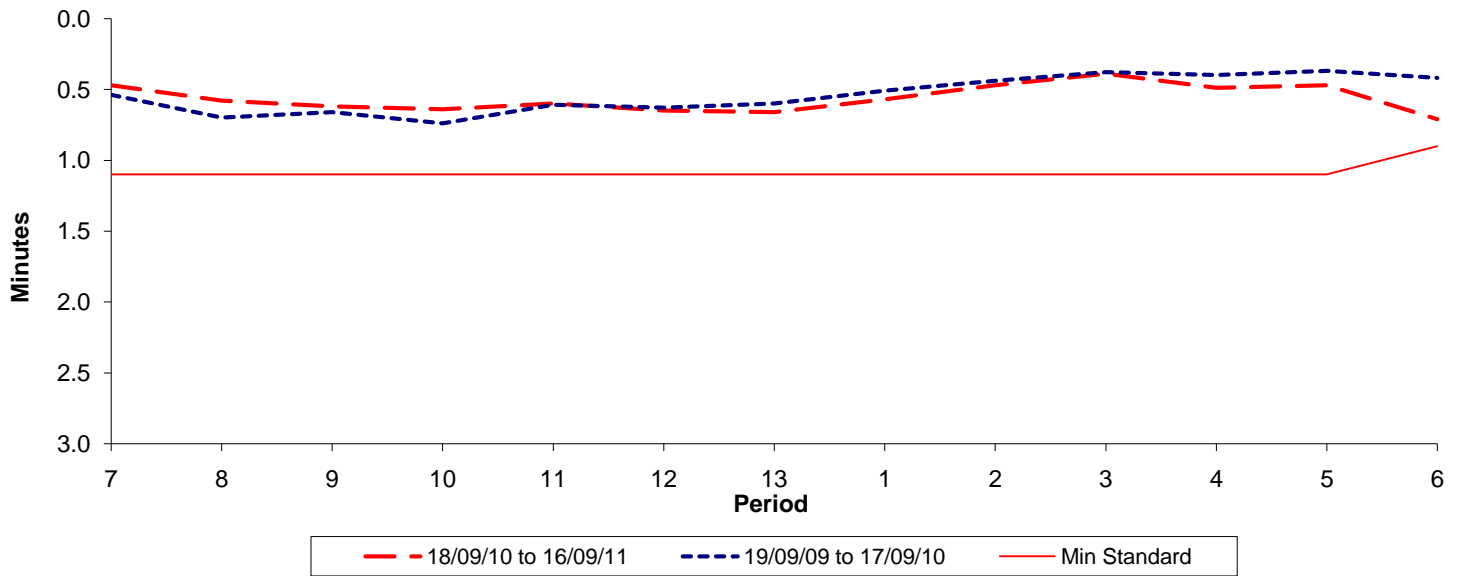




**Reliability Performance ( High Frequency )**

Excess Waiting Time (minutes)

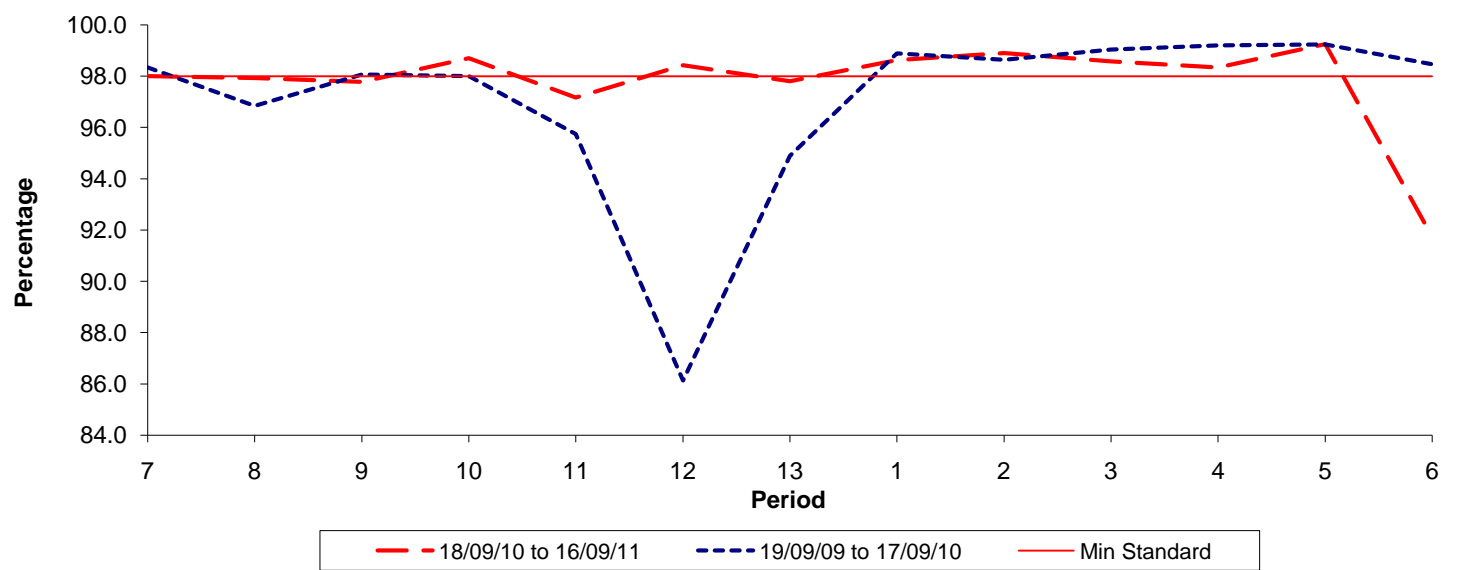


Date Range / Period	7	8	9	10	11	12	13	1	2	3	4	5	6
18/09/10 to 16/09/11	0.47	0.58	0.62	0.64	0.60	0.65	0.66	0.57	0.47	0.39	0.49	0.47	0.71
19/09/09 to 17/09/10	0.54	0.70	0.66	0.74	0.61	0.63	0.60	0.51	0.44	0.38	0.40	0.37	0.42
Min Standard	1.10	1.10	1.10	1.10	1.10	1.10	1.10	1.10	1.10	1.10	1.10	1.10	0.90

Excess Waiting Time figures are based on 12 weeks data

**Kilometre Performance**

% Kilometres Operated



Date Range / Period	7	8	9	10	11	12	13	1	2	3	4	5	6
18/09/10 to 16/09/11	98.00	97.93	97.78	98.70	97.16	98.42	97.80	98.63	98.90	98.57	98.34	99.25	91.73
19/09/09 to 17/09/10	98.34	96.84	98.07	98.01	95.75	86.13	94.90	98.89	98.64	99.04	99.20	99.24	98.46
Min Standard	98.00	98.00	98.00	98.00	98.00	98.00	98.00	98.00	98.00	98.00	98.00	98.00	98.00

Kilometre figures are based on 4 weeks data