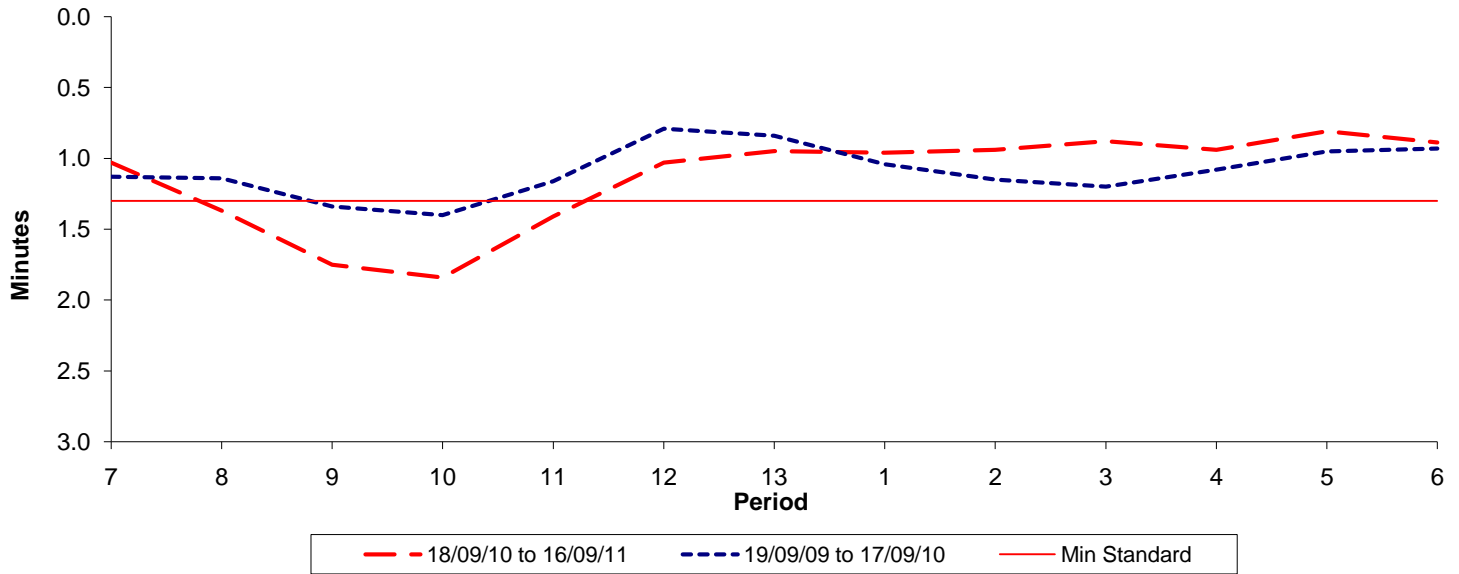




Reliability Performance (High Frequency)

Excess Waiting Time (minutes)

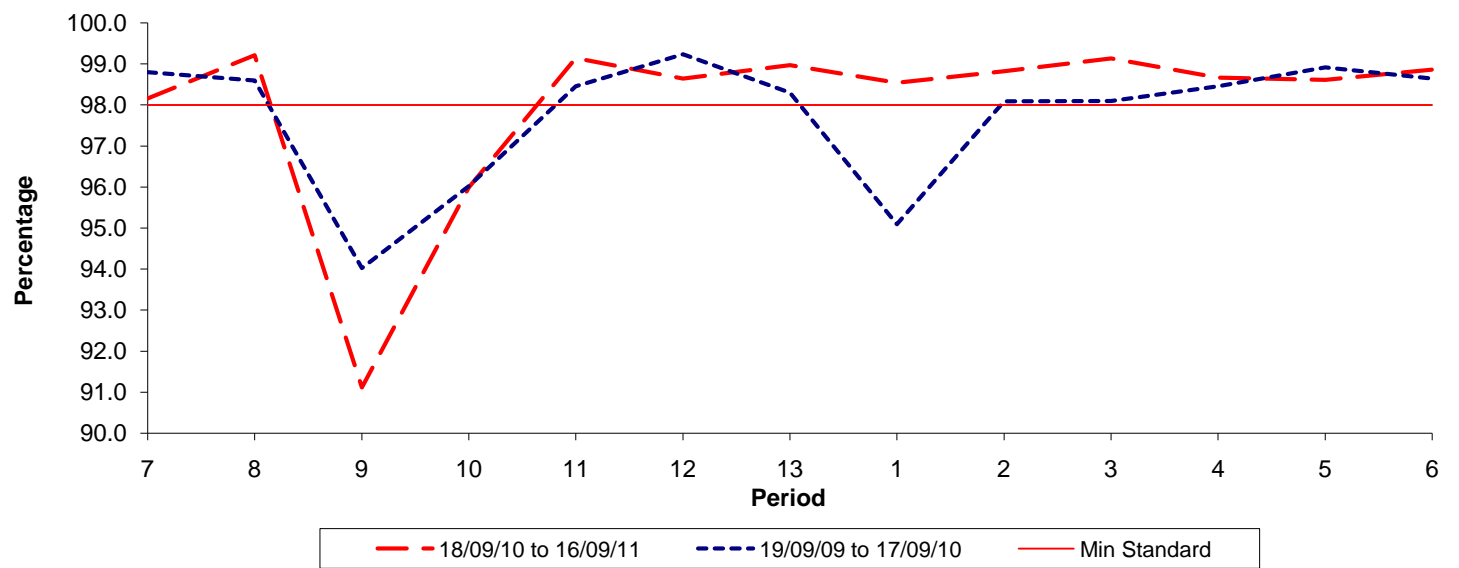


Date Range / Period	7	8	9	10	11	12	13	1	2	3	4	5	6
18/09/10 to 16/09/11	1.03	1.37	1.75	1.84	1.41	1.03	0.95	0.96	0.94	0.88	0.94	0.81	0.89
19/09/09 to 17/09/10	1.13	1.14	1.34	1.40	1.16	0.79	0.84	1.04	1.15	1.20	1.08	0.95	0.93
Min Standard	1.30	1.30	1.30	1.30	1.30	1.30	1.30	1.30	1.30	1.30	1.30	1.30	1.30

Excess Waiting Time figures are based on 12 weeks data

Kilometre Performance

% Kilometres Operated



Date Range / Period	7	8	9	10	11	12	13	1	2	3	4	5	6
18/09/10 to 16/09/11	98.16	99.21	91.11	95.99	99.14	98.64	98.97	98.54	98.82	99.13	98.66	98.61	98.86
19/09/09 to 17/09/10	98.80	98.60	94.02	96.02	98.46	99.24	98.30	95.09	98.09	98.10	98.46	98.92	98.65
Min Standard	98.00	98.00	98.00	98.00	98.00	98.00	98.00	98.00	98.00	98.00	98.00	98.00	98.00

Kilometre figures are based on 4 weeks data