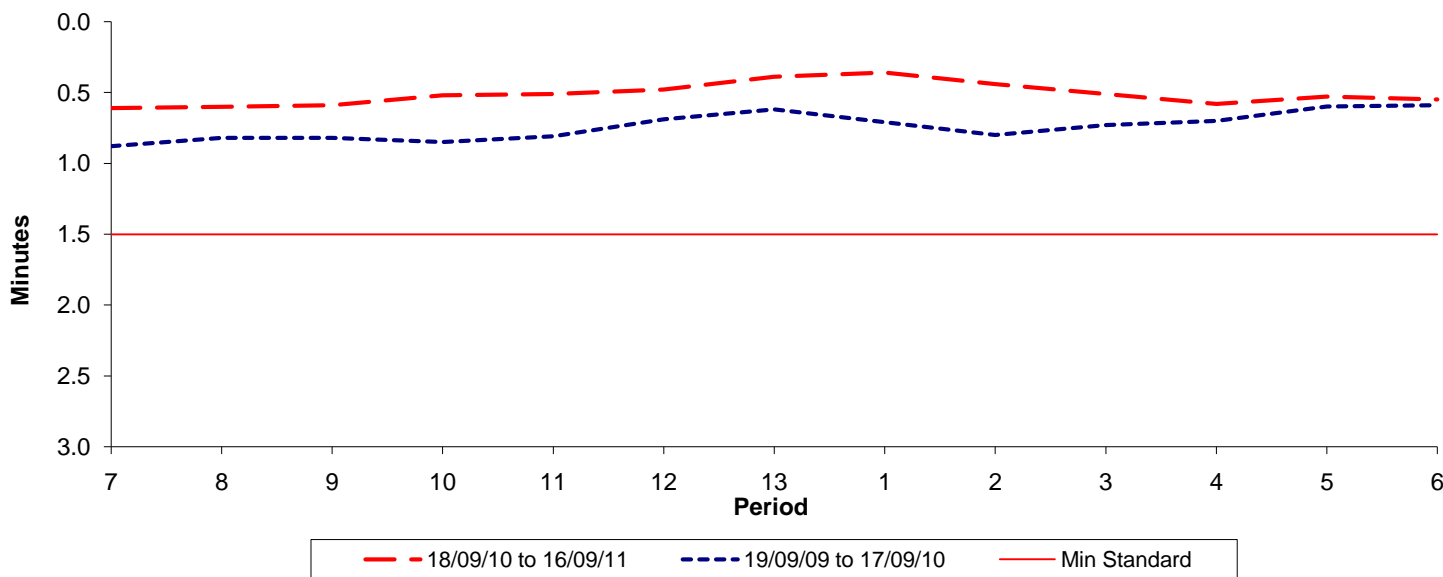




Reliability Performance (High Frequency)

Excess Waiting Time (minutes)

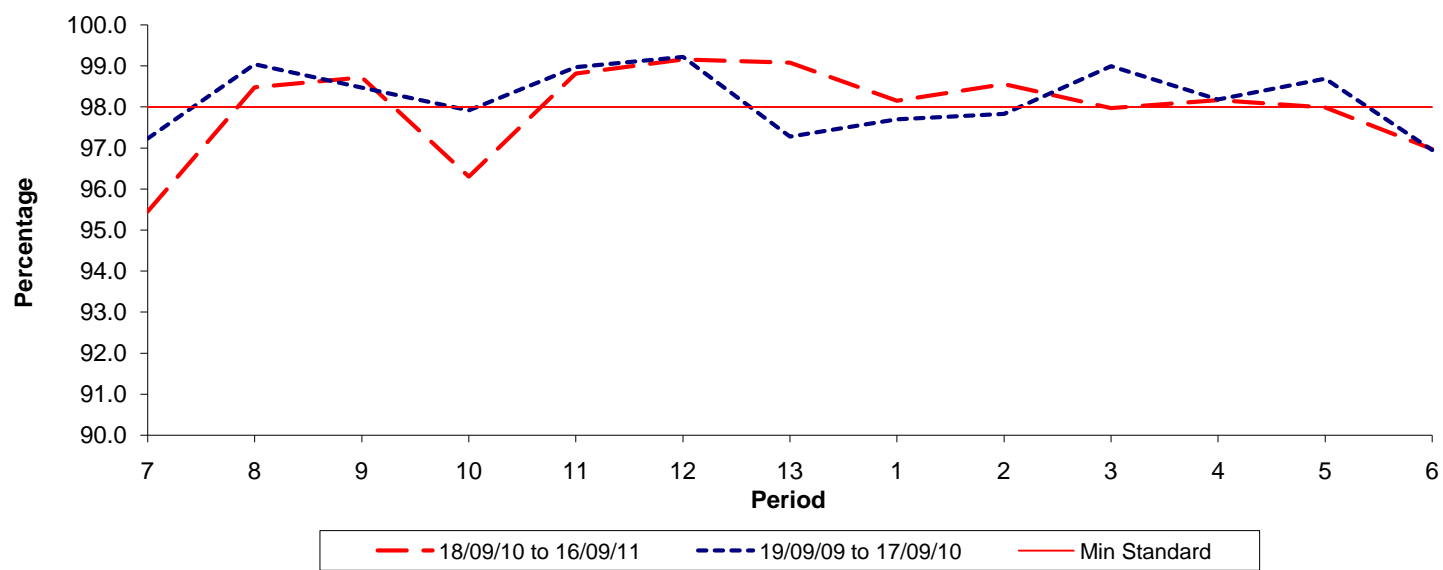


Date Range / Period	7	8	9	10	11	12	13	1	2	3	4	5	6
18/09/10 to 16/09/11	0.61	0.60	0.59	0.52	0.51	0.48	0.39	0.36	0.44	0.51	0.58	0.53	0.55
19/09/09 to 17/09/10	0.88	0.82	0.82	0.85	0.81	0.69	0.62	0.71	0.80	0.73	0.70	0.60	0.59
Min Standard	1.50	1.50	1.50	1.50	1.50	1.50	1.50	1.50	1.50	1.50	1.50	1.50	1.50

Excess Waiting Time figures are based on 12 weeks data

Kilometre Performance

% Kilometres Operated



Date Range / Period	7	8	9	10	11	12	13	1	2	3	4	5	6
18/09/10 to 16/09/11	95.45	98.48	98.72	96.30	98.82	99.16	99.08	98.15	98.56	97.97	98.17	97.99	96.97
19/09/09 to 17/09/10	97.23	99.04	98.47	97.92	98.97	99.22	97.28	97.70	97.83	98.99	98.18	98.69	96.95
Min Standard	98.00	98.00	98.00	98.00	98.00	98.00	98.00	98.00	98.00	98.00	98.00	98.00	98.00

Kilometre figures are based on 4 weeks data