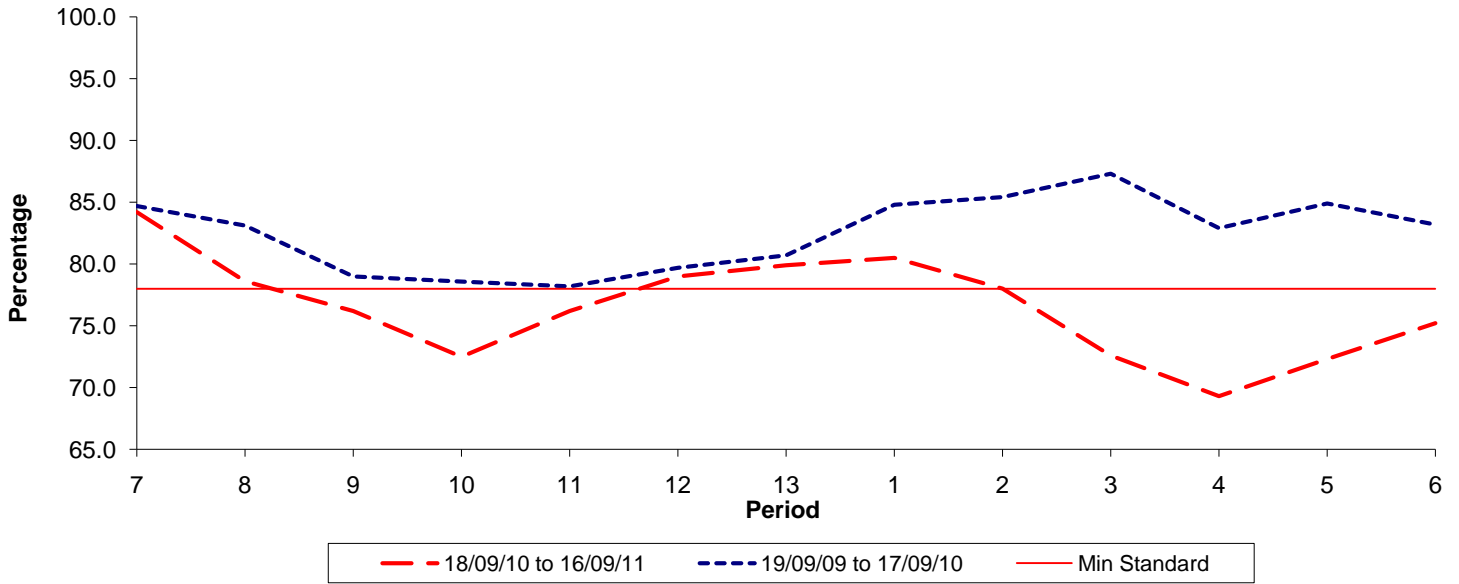




Reliability Performance (Low Frequency)

% Departing On Time

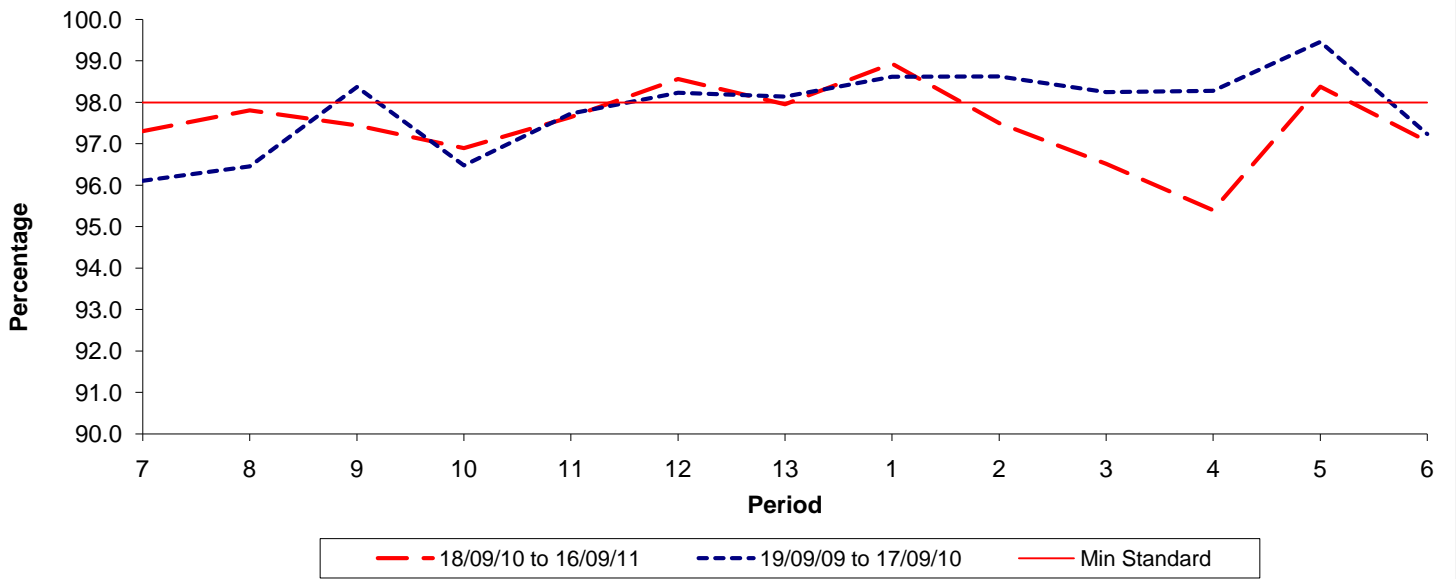


| Date Range / Period | 7 | 8 | 9 | 10 | 11 | 12 | 13 | 1 | 2 | 3 | 4 | 5 | 6 |
|----------------------|-------|-------|-------|-------|-------|-------|-------|-------|-------|-------|-------|-------|-------|
| 18/09/10 to 16/09/11 | 84.20 | 78.60 | 76.20 | 72.50 | 76.20 | 79.00 | 79.90 | 80.50 | 78.00 | 72.60 | 69.30 | 72.30 | 75.20 |
| 19/09/09 to 17/09/10 | 84.70 | 83.10 | 79.00 | 78.60 | 78.20 | 79.70 | 80.70 | 84.80 | 85.40 | 87.30 | 82.90 | 84.90 | 83.20 |
| Min Standard | 78.00 | 78.00 | 78.00 | 78.00 | 78.00 | 78.00 | 78.00 | 78.00 | 78.00 | 78.00 | 78.00 | 78.00 | 78.00 |

On Time figures are based on 12 weeks data

Kilometre Performance

% Kilometres Operated



| Date Range / Period | 7 | 8 | 9 | 10 | 11 | 12 | 13 | 1 | 2 | 3 | 4 | 5 | 6 |
|----------------------|-------|-------|-------|-------|-------|-------|-------|-------|-------|-------|-------|-------|-------|
| 18/09/10 to 16/09/11 | 97.31 | 97.81 | 97.45 | 96.90 | 97.65 | 98.57 | 97.96 | 98.94 | 97.50 | 96.52 | 95.40 | 98.38 | 97.06 |
| 19/09/09 to 17/09/10 | 96.11 | 96.46 | 98.37 | 96.48 | 97.73 | 98.23 | 98.14 | 98.62 | 98.63 | 98.25 | 98.28 | 99.46 | 97.24 |
| Min Standard | 98.00 | 98.00 | 98.00 | 98.00 | 98.00 | 98.00 | 98.00 | 98.00 | 98.00 | 98.00 | 98.00 | 98.00 | 98.00 |

Kilometre figures are based on 4 weeks data