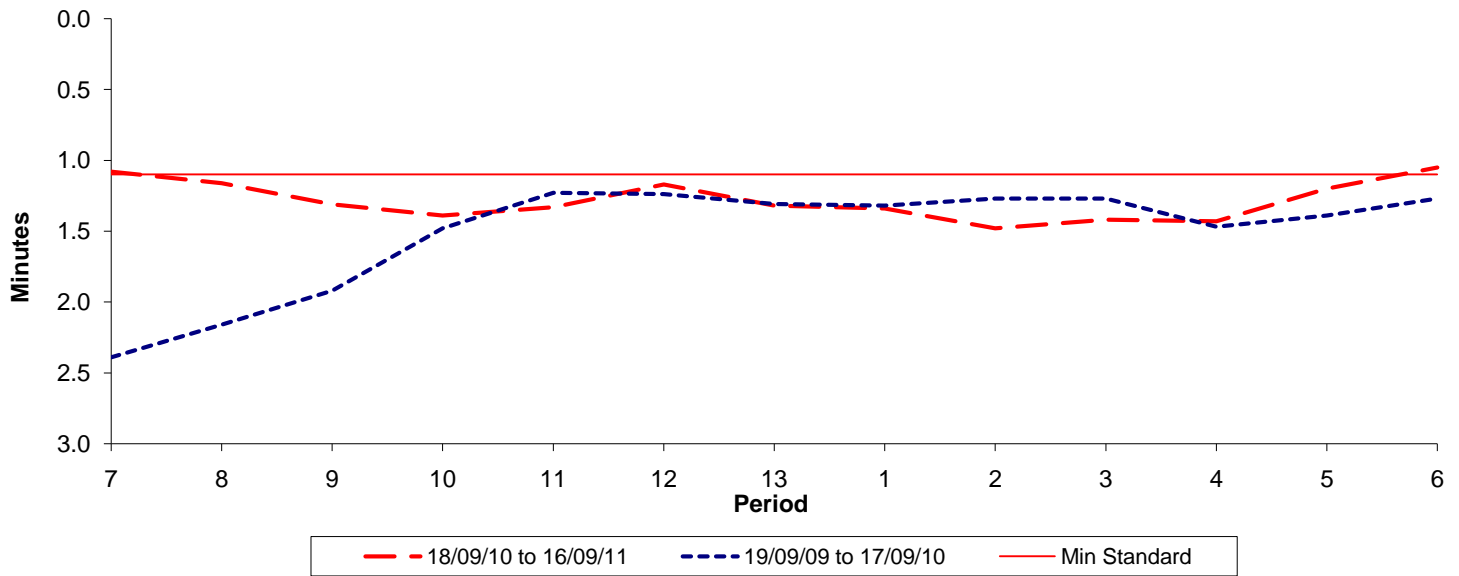




Reliability Performance (High Frequency)

Excess Waiting Time (minutes)

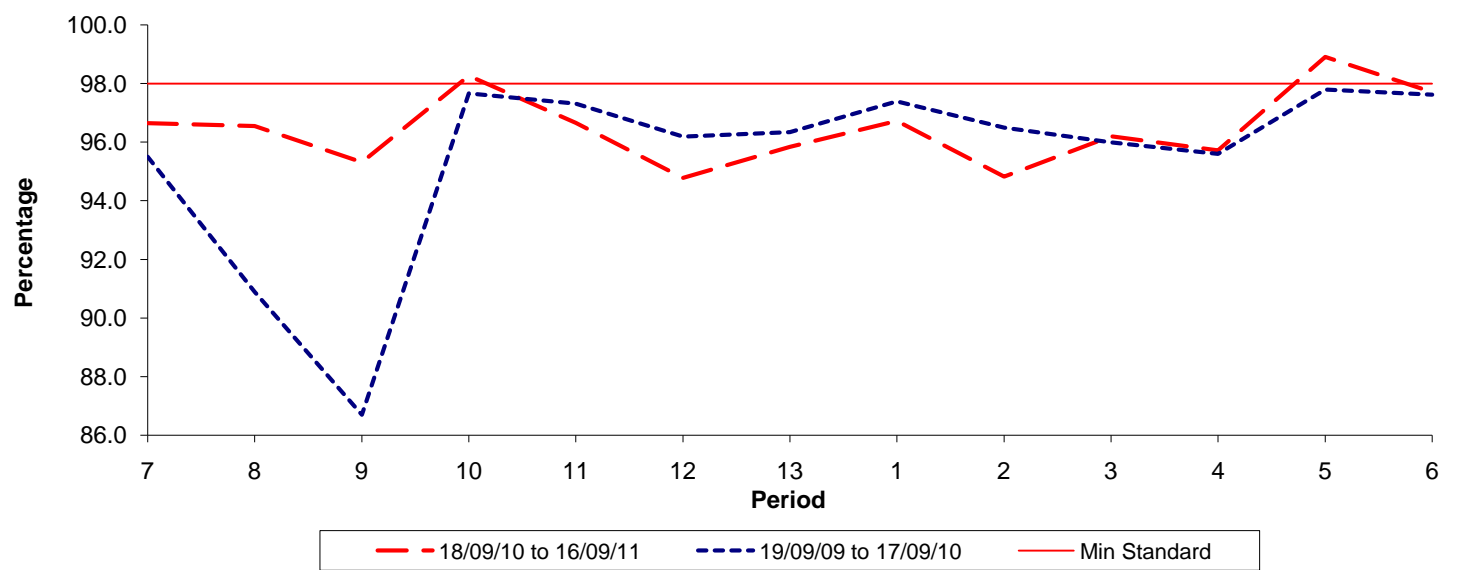


Date Range / Period	7	8	9	10	11	12	13	1	2	3	4	5	6
18/09/10 to 16/09/11	1.08	1.16	1.31	1.39	1.33	1.17	1.32	1.34	1.48	1.42	1.43	1.20	1.05
19/09/09 to 17/09/10	2.39	2.16	1.92	1.48	1.23	1.24	1.31	1.32	1.27	1.27	1.47	1.39	1.27
Min Standard	1.10	1.10	1.10	1.10	1.10	1.10	1.10	1.10	1.10	1.10	1.10	1.10	1.10

Excess Waiting Time figures are based on 12 weeks data

Kilometre Performance

% Kilometres Operated



Date Range / Period	7	8	9	10	11	12	13	1	2	3	4	5	6
18/09/10 to 16/09/11	96.65	96.55	95.31	98.26	96.66	94.78	95.84	96.72	94.82	96.20	95.72	98.91	97.71
19/09/09 to 17/09/10	95.50	90.88	86.69	97.66	97.31	96.18	96.34	97.39	96.49	95.99	95.59	97.79	97.62
Min Standard	98.00	98.00	98.00	98.00	98.00	98.00	98.00	98.00	98.00	98.00	98.00	98.00	98.00

Kilometre figures are based on 4 weeks data