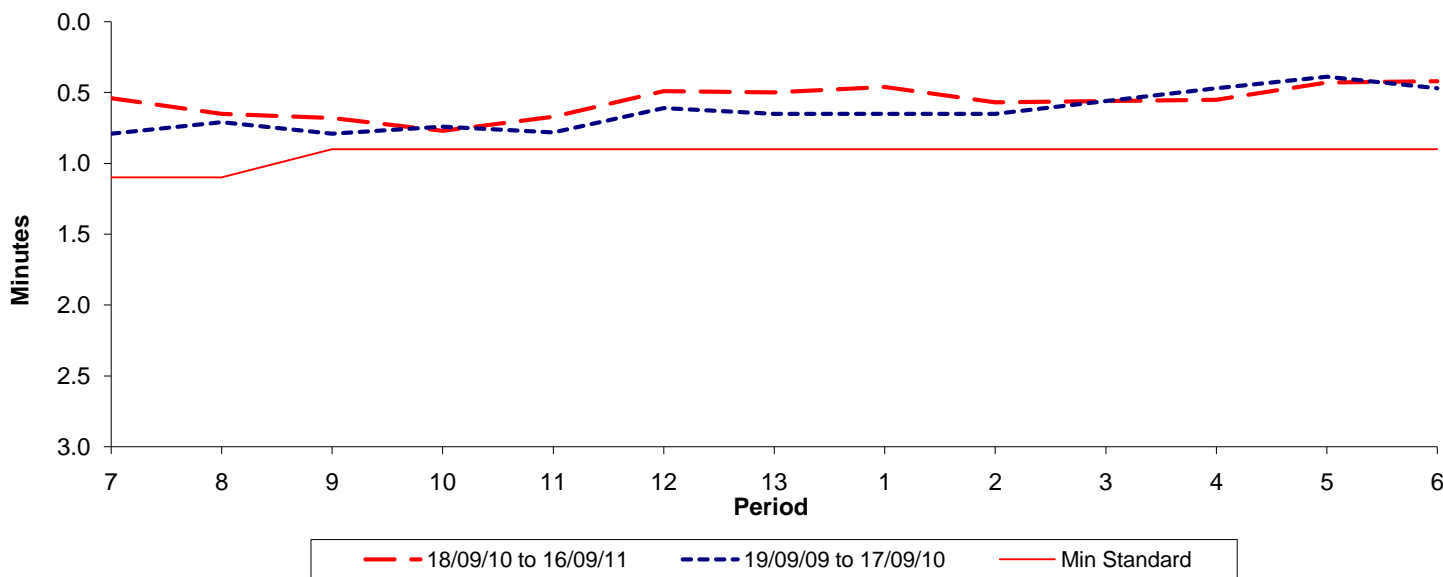




Reliability Performance (High Frequency)

Excess Waiting Time (minutes)

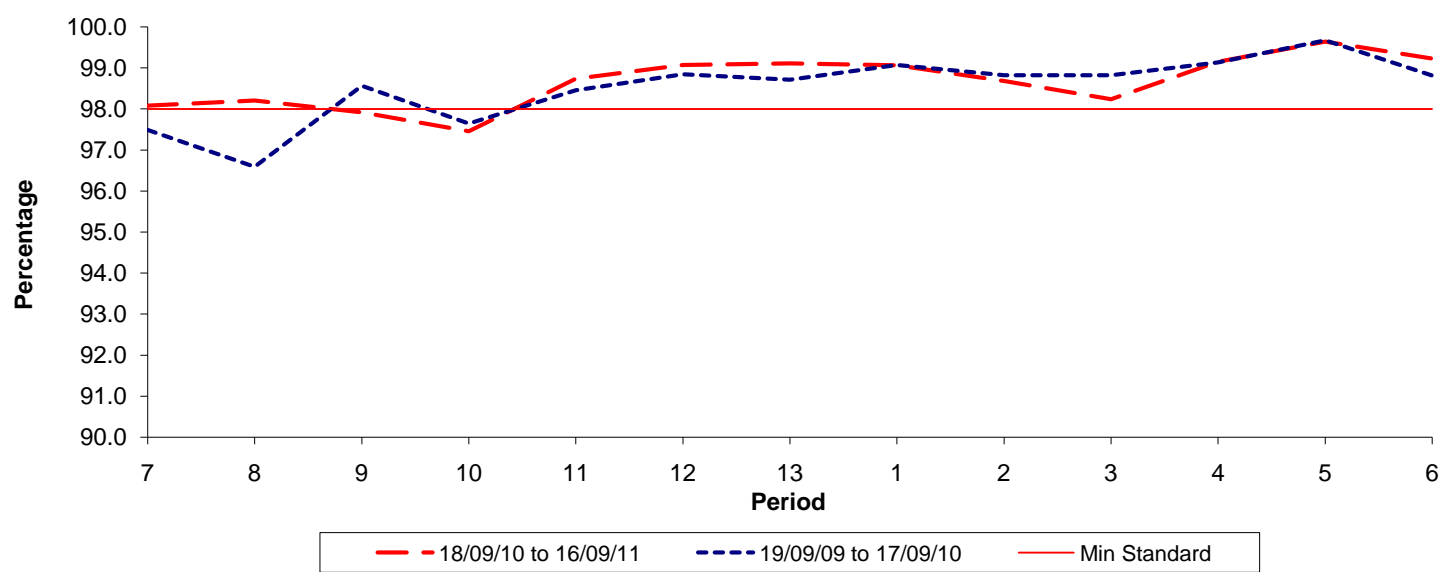


Date Range / Period	7	8	9	10	11	12	13	1	2	3	4	5	6
18/09/10 to 16/09/11	0.54	0.65	0.68	0.77	0.67	0.49	0.50	0.46	0.57	0.56	0.55	0.43	0.42
19/09/09 to 17/09/10	0.79	0.71	0.79	0.74	0.78	0.61	0.65	0.65	0.65	0.56	0.47	0.39	0.47
Min Standard	1.10	1.10	0.90	0.90	0.90	0.90	0.90	0.90	0.90	0.90	0.90	0.90	0.90

Excess Waiting Time figures are based on 12 weeks data

Kilometre Performance

% Kilometres Operated



Date Range / Period	7	8	9	10	11	12	13	1	2	3	4	5	6
18/09/10 to 16/09/11	98.08	98.21	97.92	97.46	98.74	99.07	99.11	99.06	98.68	98.24	99.15	99.64	99.23
19/09/09 to 17/09/10	97.49	96.59	98.56	97.64	98.45	98.84	98.71	99.07	98.82	98.82	99.13	99.67	98.81
Min Standard	98.00	98.00	98.00	98.00	98.00	98.00	98.00	98.00	98.00	98.00	98.00	98.00	98.00

Kilometre figures are based on 4 weeks data