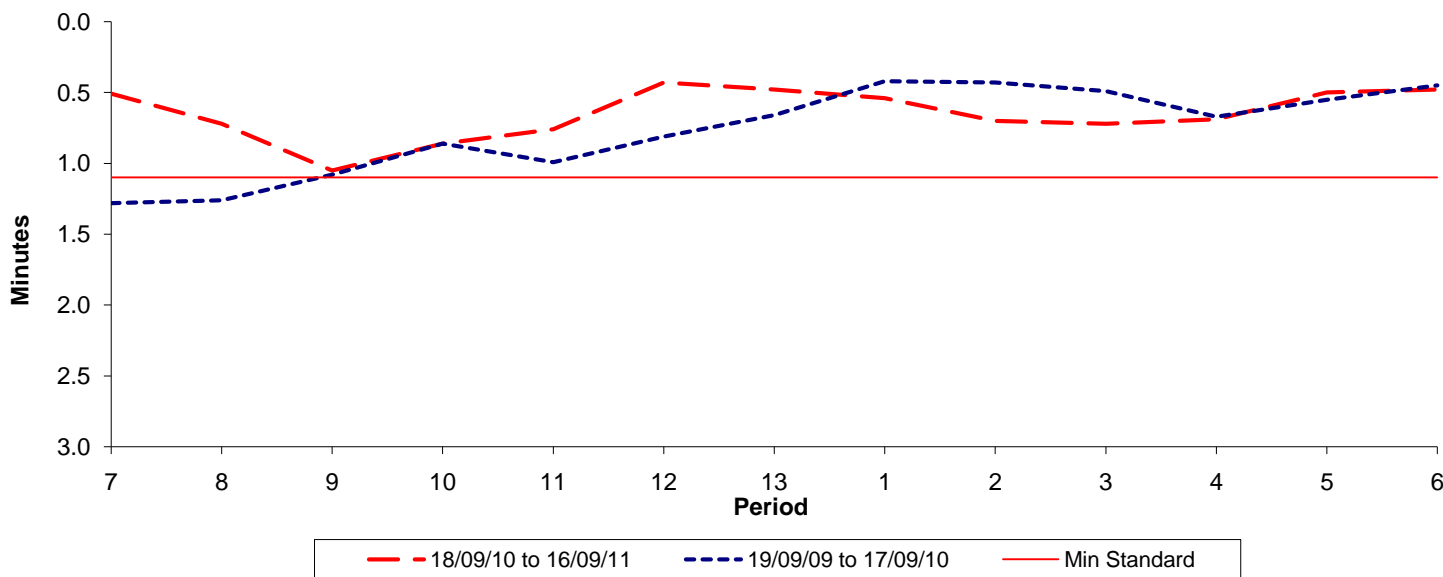




Reliability Performance (High Frequency)

Excess Waiting Time (minutes)

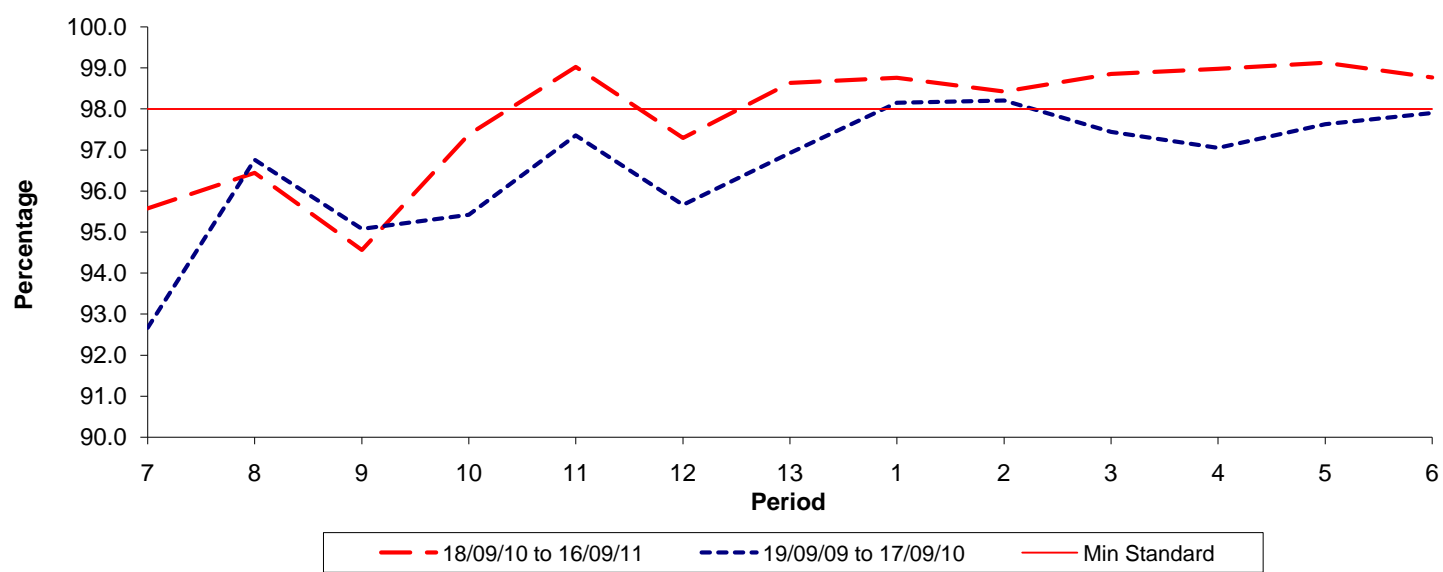


Date Range / Period	7	8	9	10	11	12	13	1	2	3	4	5	6
18/09/10 to 16/09/11	0.51	0.72	1.05	0.86	0.76	0.43	0.48	0.54	0.70	0.72	0.69	0.50	0.48
19/09/09 to 17/09/10	1.28	1.26	1.08	0.86	0.99	0.81	0.66	0.42	0.43	0.49	0.67	0.55	0.45
Min Standard	1.10	1.10	1.10	1.10	1.10	1.10	1.10	1.10	1.10	1.10	1.10	1.10	1.10

Excess Waiting Time figures are based on 12 weeks data

Kilometre Performance

% Kilometres Operated



Date Range / Period	7	8	9	10	11	12	13	1	2	3	4	5	6
18/09/10 to 16/09/11	95.58	96.45	94.56	97.38	99.03	97.29	98.64	98.76	98.43	98.86	98.98	99.13	98.77
19/09/09 to 17/09/10	92.66	96.76	95.08	95.42	97.35	95.66	96.92	98.15	98.20	97.43	97.05	97.63	97.90
Min Standard	98.00	98.00	98.00	98.00	98.00	98.00	98.00	98.00	98.00	98.00	98.00	98.00	98.00

Kilometre figures are based on 4 weeks data