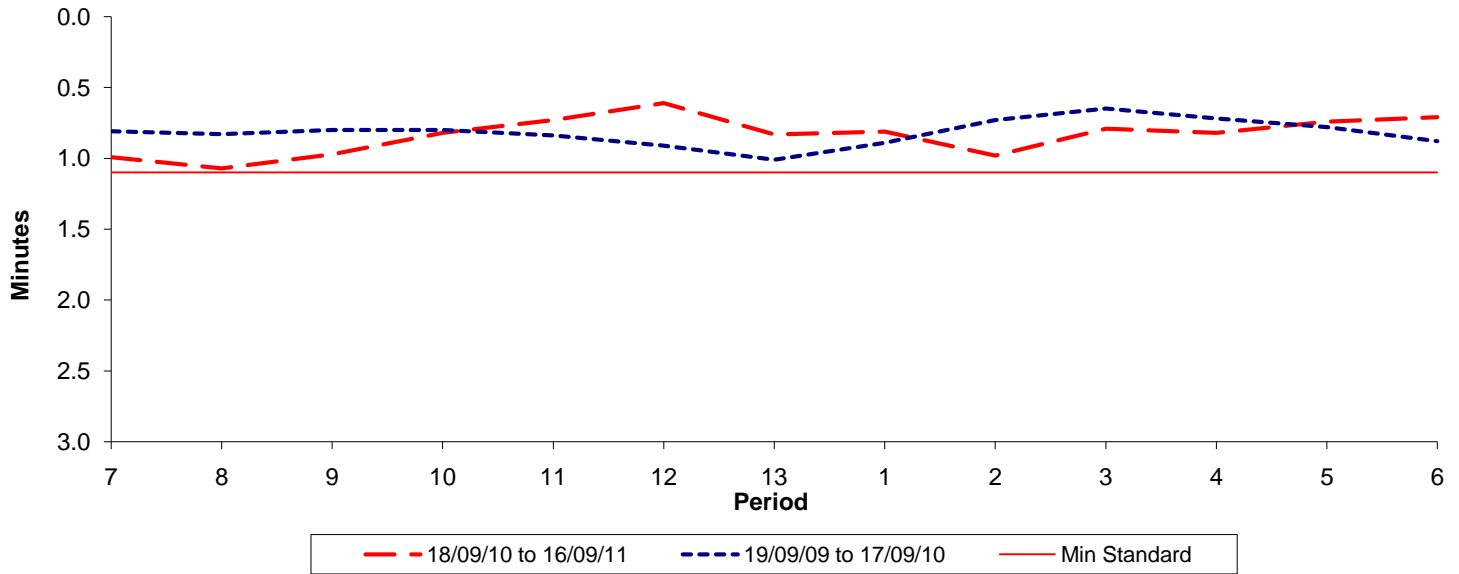




Reliability Performance (High Frequency)

Excess Waiting Time (minutes)

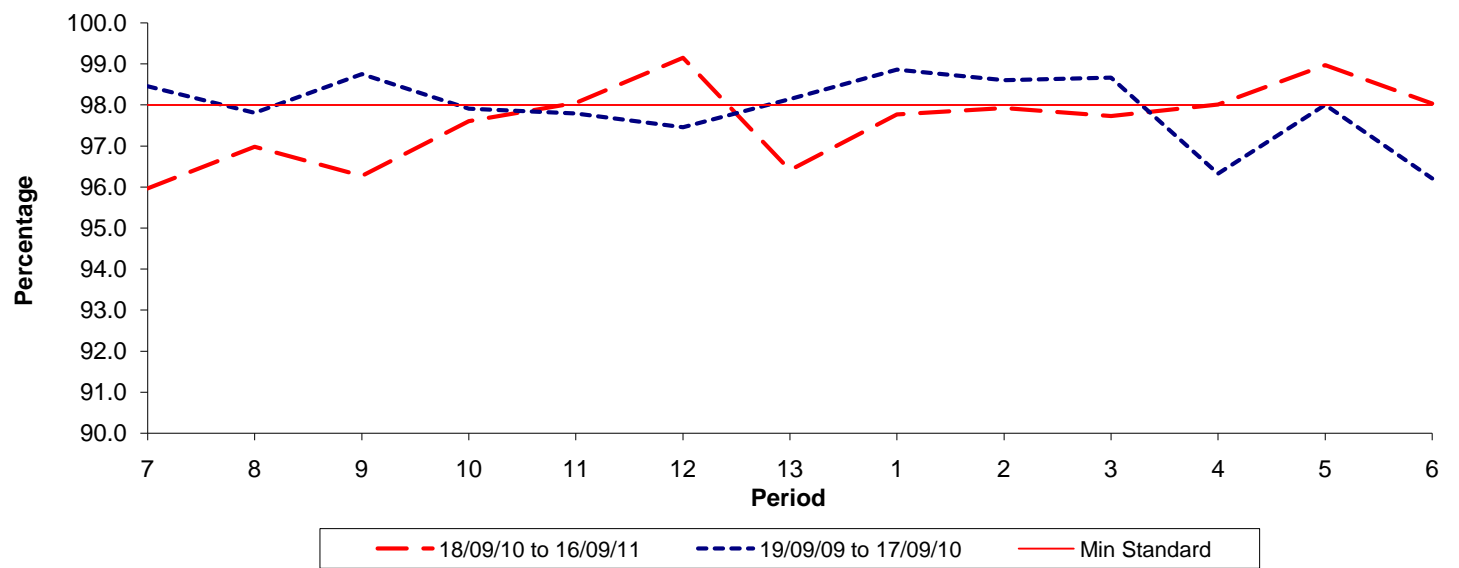


Date Range / Period	7	8	9	10	11	12	13	1	2	3	4	5	6
18/09/10 to 16/09/11	0.99	1.07	0.97	0.82	0.73	0.61	0.83	0.81	0.98	0.79	0.82	0.74	0.71
19/09/09 to 17/09/10	0.81	0.83	0.80	0.80	0.84	0.91	1.01	0.89	0.73	0.65	0.72	0.78	0.88
Min Standard	1.10	1.10	1.10	1.10	1.10	1.10	1.10	1.10	1.10	1.10	1.10	1.10	1.10

Excess Waiting Time figures are based on 12 weeks data

Kilometre Performance

% Kilometres Operated



Date Range / Period	7	8	9	10	11	12	13	1	2	3	4	5	6
18/09/10 to 16/09/11	95.97	96.98	96.27	97.60	98.05	99.15	96.41	97.77	97.92	97.73	98.01	98.97	98.03
19/09/09 to 17/09/10	98.46	97.81	98.75	97.91	97.80	97.46	98.14	98.86	98.60	98.67	96.33	98.01	96.21
Min Standard	98.00	98.00	98.00	98.00	98.00	98.00	98.00	98.00	98.00	98.00	98.00	98.00	98.00

Kilometre figures are based on 4 weeks data