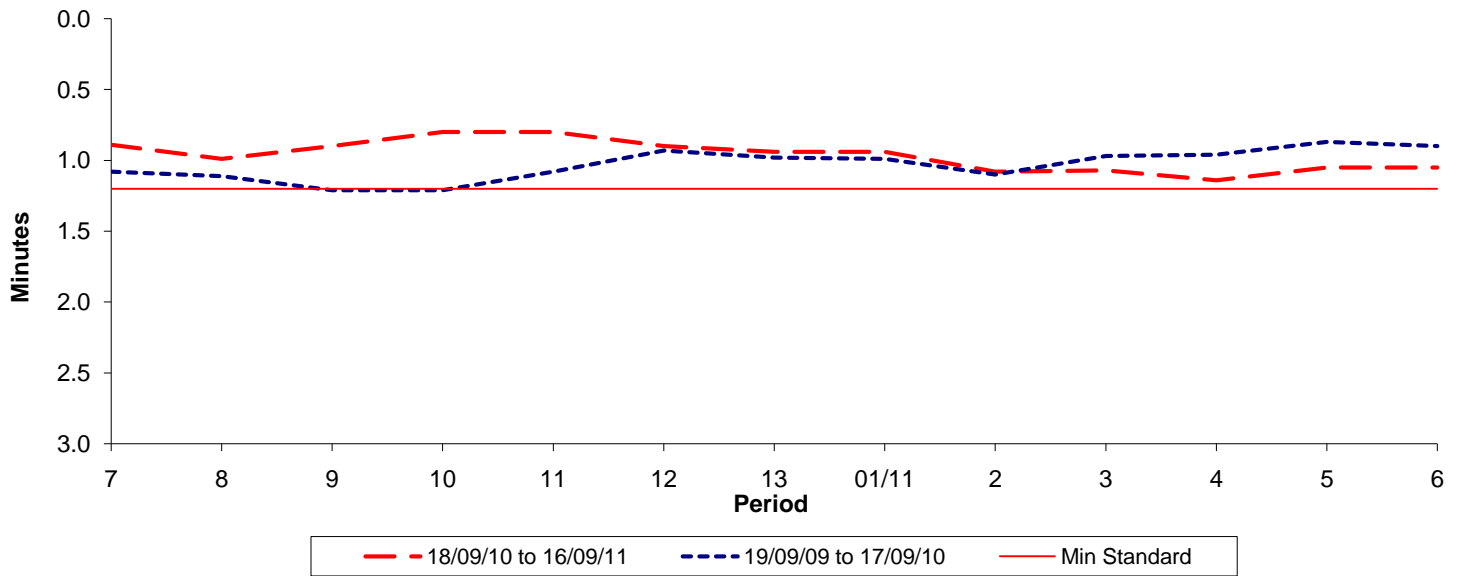




Reliability Performance (High Frequency)

Excess Waiting Time (minutes)

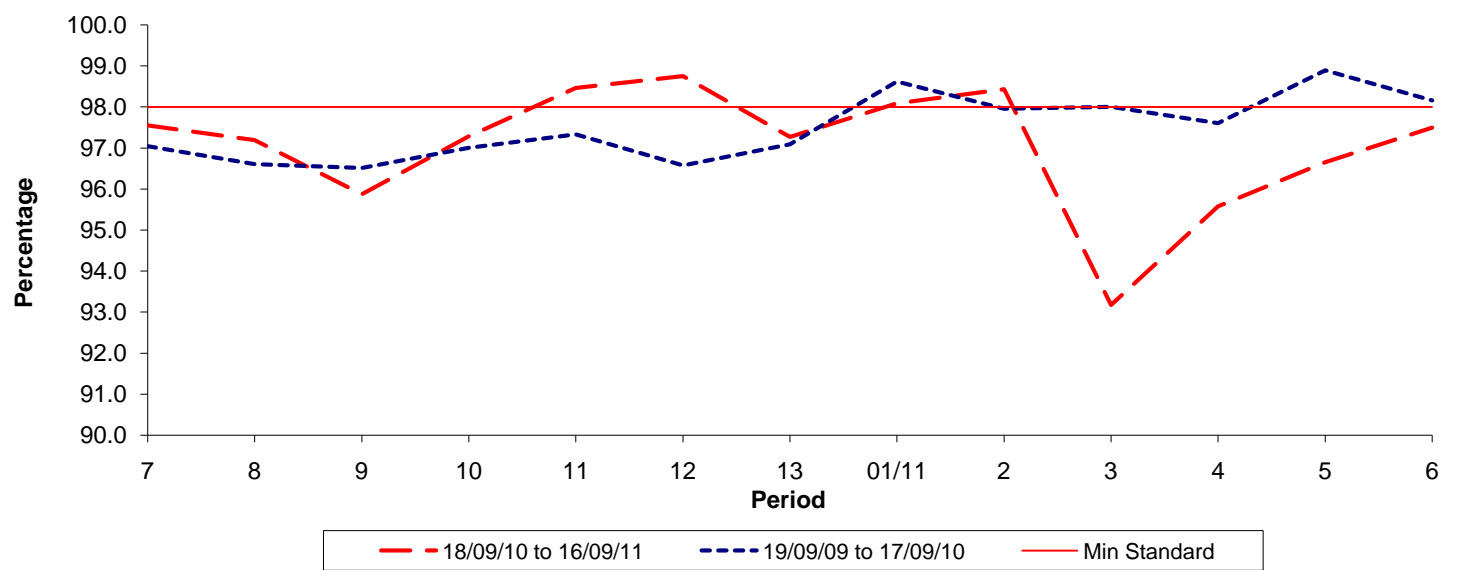


Date Range / Period	7	8	9	10	11	12	13	01/11	2	3	4	5	6
18/09/10 to 16/09/11	0.89	0.99	0.90	0.80	0.80	0.90	0.94	0.94	1.08	1.07	1.14	1.05	1.05
19/09/09 to 17/09/10	1.08	1.11	1.21	1.21	1.08	0.93	0.98	0.99	1.10	0.97	0.96	0.87	0.90
Min Standard	1.20	1.20	1.20	1.20	1.20	1.20	1.20	1.20	1.20	1.20	1.20	1.20	1.20

Excess Waiting Time figures are based on 12 weeks data

Kilometre Performance

% Kilometres Operated



Date Range / Period	7	8	9	10	11	12	13	01/11	2	3	4	5	6
18/09/10 to 16/09/11	97.55	97.19	95.87	97.28	98.46	98.75	97.27	98.09	98.43	93.17	95.57	96.65	97.49
19/09/09 to 17/09/10	97.04	96.60	96.51	97.00	97.33	96.57	97.09	98.62	97.95	98.00	97.60	98.89	98.16
Min Standard	98.00	98.00	98.00	98.00	98.00	98.00	98.00	98.00	98.00	98.00	98.00	98.00	98.00

Kilometre figures are based on 4 weeks data