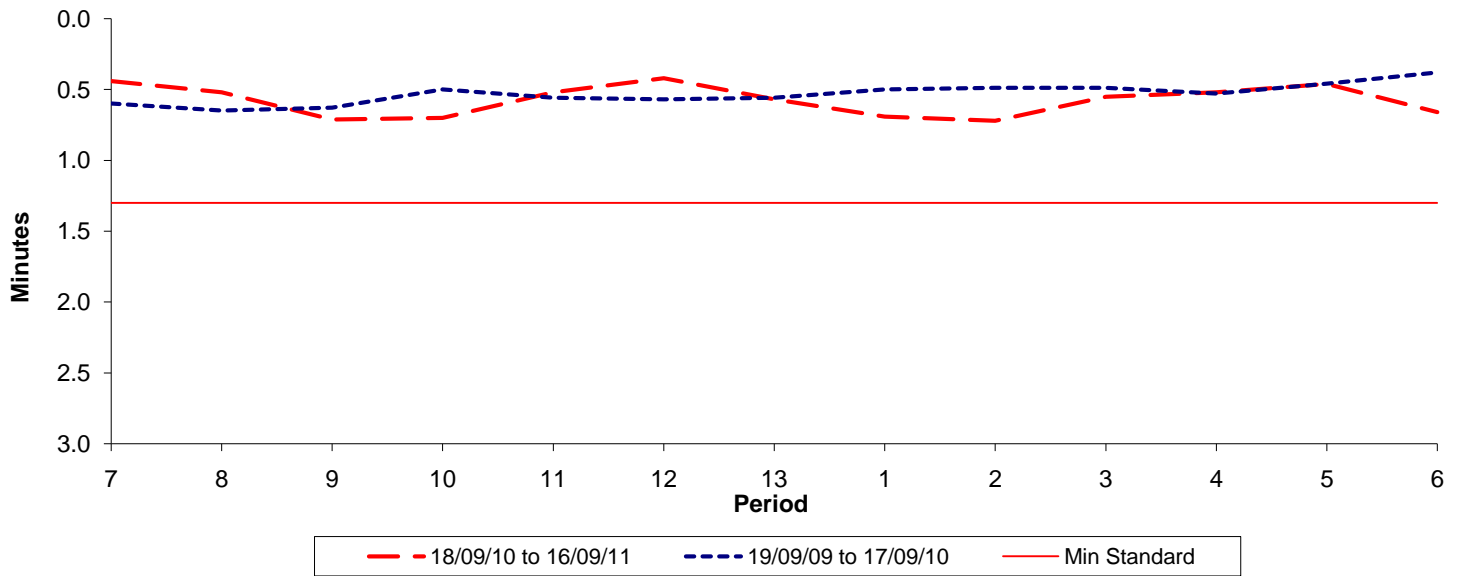




**Reliability Performance ( High Frequency )**

**Excess Waiting Time (minutes)**

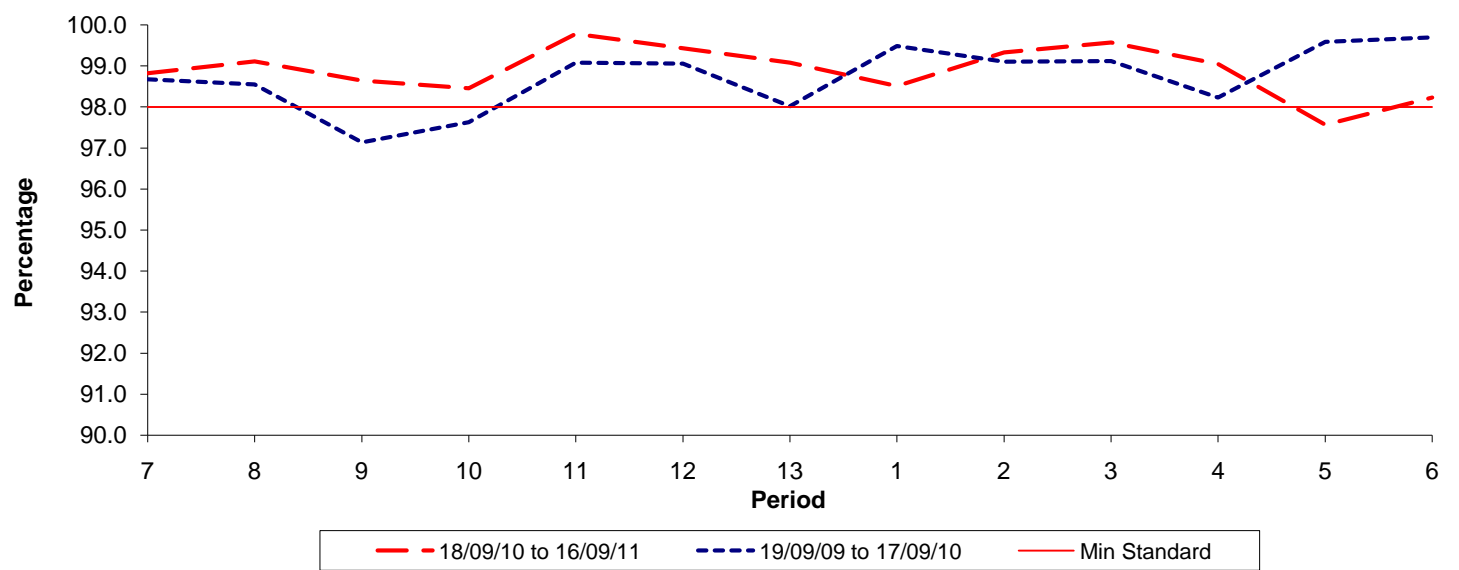


Date Range / Period	7	8	9	10	11	12	13	1	2	3	4	5	6
18/09/10 to 16/09/11	0.44	0.52	0.71	0.70	0.52	0.42	0.57	0.69	0.72	0.55	0.52	0.46	0.66
19/09/09 to 17/09/10	0.60	0.65	0.63	0.50	0.56	0.57	0.56	0.50	0.49	0.49	0.53	0.46	0.38
Min Standard	1.30	1.30	1.30	1.30	1.30	1.30	1.30	1.30	1.30	1.30	1.30	1.30	1.30

Excess Waiting Time figures are based on 12 weeks data

**Kilometre Performance**

**% Kilometres Operated**



Date Range / Period	7	8	9	10	11	12	13	1	2	3	4	5	6
18/09/10 to 16/09/11	98.82	99.11	98.64	98.46	99.78	99.43	99.08	98.51	99.33	99.57	99.05	97.57	98.23
19/09/09 to 17/09/10	98.68	98.55	97.14	97.63	99.08	99.06	98.02	99.49	99.11	99.12	98.23	99.59	99.70
Min Standard	98.00	98.00	98.00	98.00	98.00	98.00	98.00	98.00	98.00	98.00	98.00	98.00	98.00

Kilometre figures are based on 4 weeks data