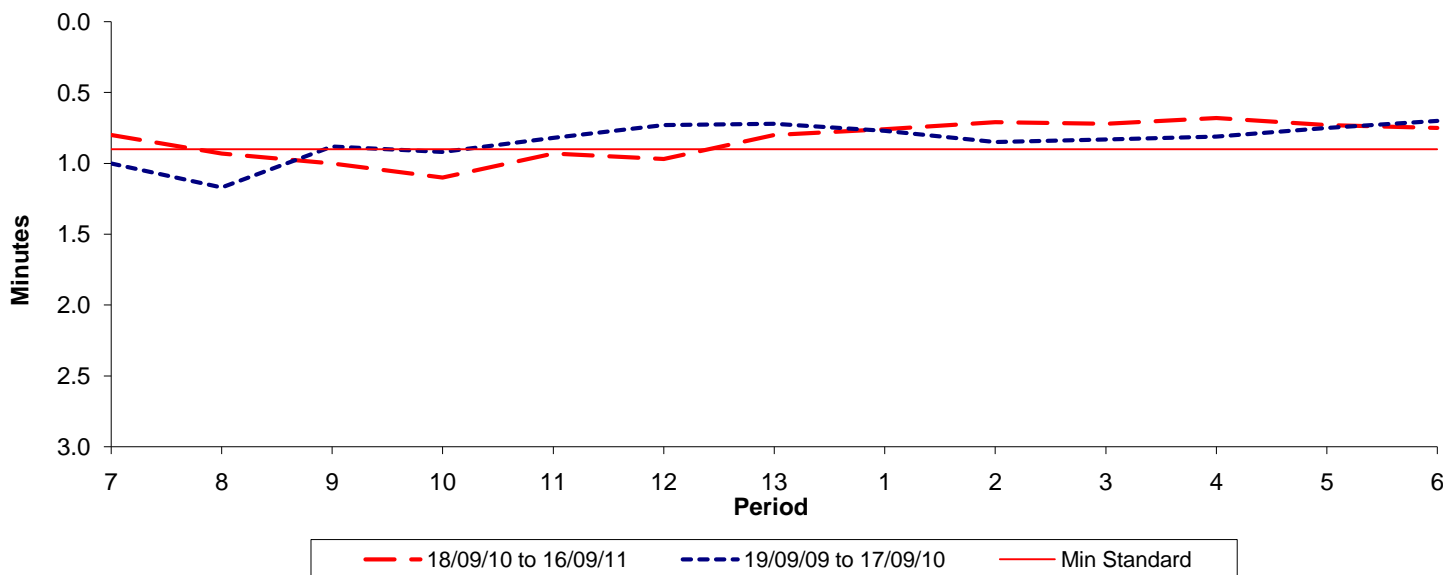




Reliability Performance (High Frequency)

Excess Waiting Time (minutes)

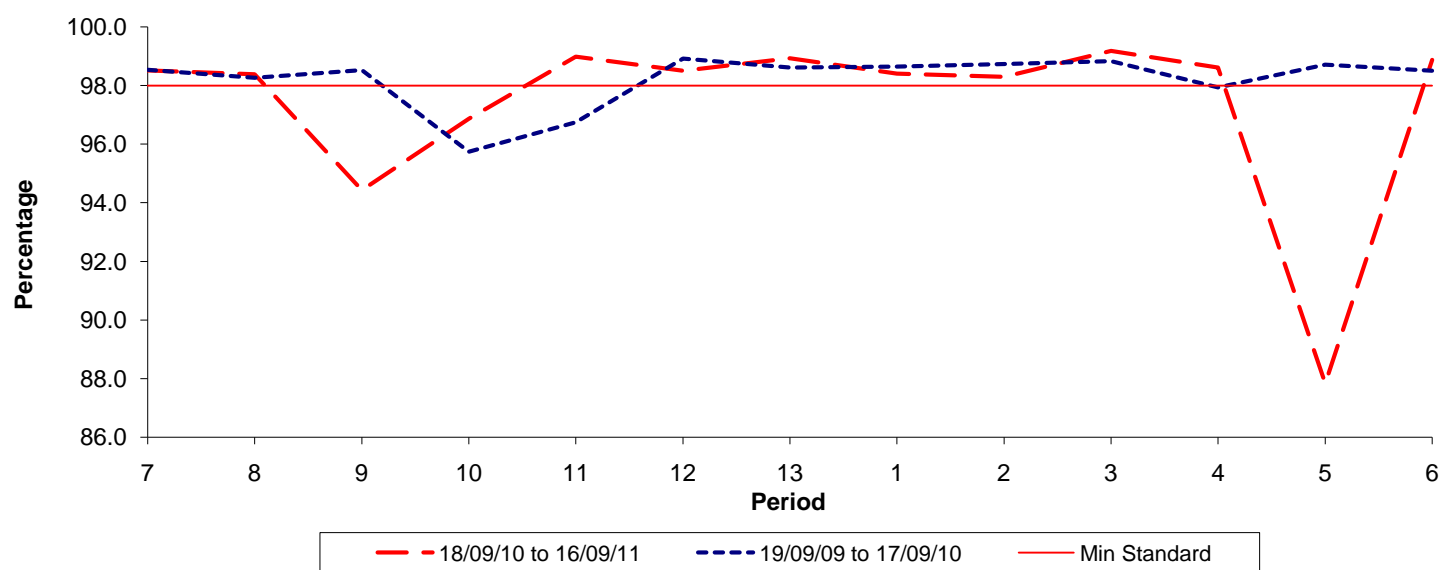


Date Range / Period	7	8	9	10	11	12	13	1	2	3	4	5	6
18/09/10 to 16/09/11	0.80	0.93	1.00	1.10	0.93	0.97	0.80	0.76	0.71	0.72	0.68	0.73	0.75
19/09/09 to 17/09/10	1.00	1.17	0.88	0.92	0.82	0.73	0.72	0.77	0.85	0.83	0.81	0.75	0.70
Min Standard	0.90	0.90	0.90	0.90	0.90	0.90	0.90	0.90	0.90	0.90	0.90	0.90	0.90

Excess Waiting Time figures are based on 12 weeks data

Kilometre Performance

% Kilometres Operated



Date Range / Period	7	8	9	10	11	12	13	1	2	3	4	5	6
18/09/10 to 16/09/11	98.51	98.38	94.43	96.86	98.98	98.50	98.93	98.40	98.30	99.18	98.61	87.83	98.87
19/09/09 to 17/09/10	98.54	98.26	98.53	95.74	96.74	98.92	98.61	98.65	98.73	98.83	97.94	98.71	98.51
Min Standard	98.00	98.00	98.00	98.00	98.00	98.00	98.00	98.00	98.00	98.00	98.00	98.00	98.00

Kilometre figures are based on 4 weeks data