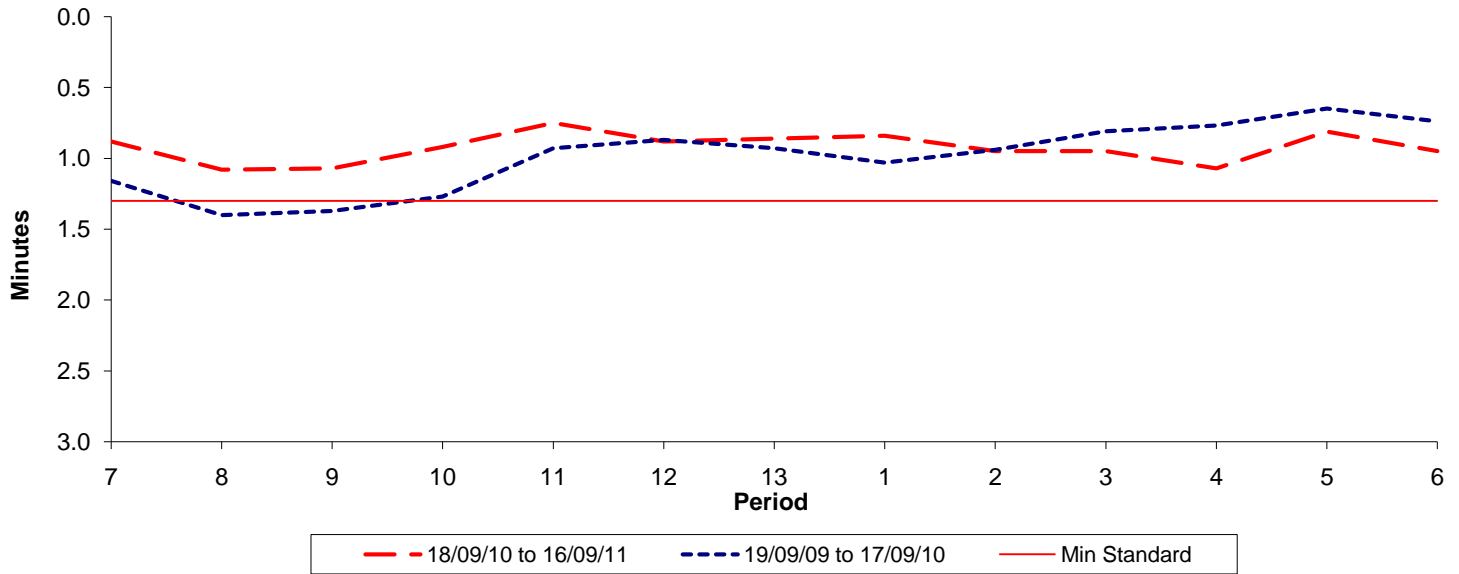




Reliability Performance (High Frequency)

Excess Waiting Time (minutes)

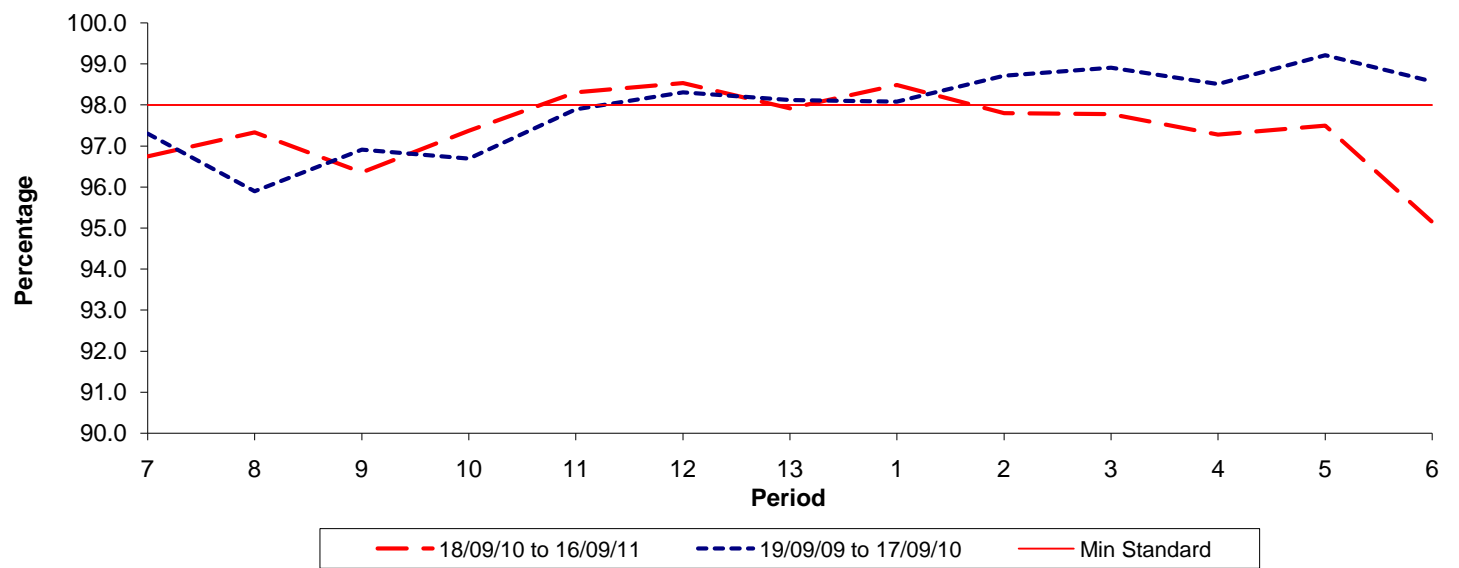


Date Range / Period	7	8	9	10	11	12	13	1	2	3	4	5	6
18/09/10 to 16/09/11	0.88	1.08	1.07	0.92	0.75	0.88	0.86	0.84	0.95	0.95	1.07	0.81	0.95
19/09/09 to 17/09/10	1.16	1.40	1.37	1.27	0.93	0.87	0.93	1.03	0.94	0.81	0.77	0.65	0.74
Min Standard	1.30	1.30	1.30	1.30	1.30	1.30	1.30	1.30	1.30	1.30	1.30	1.30	1.30

Excess Waiting Time figures are based on 12 weeks data

Kilometre Performance

% Kilometres Operated



Date Range / Period	7	8	9	10	11	12	13	1	2	3	4	5	6
18/09/10 to 16/09/11	96.75	97.34	96.36	97.37	98.31	98.54	97.92	98.49	97.80	97.78	97.28	97.50	95.15
19/09/09 to 17/09/10	97.30	95.90	96.91	96.69	97.89	98.31	98.12	98.08	98.71	98.91	98.51	99.21	98.57
Min Standard	98.00	98.00	98.00	98.00	98.00	98.00	98.00	98.00	98.00	98.00	98.00	98.00	98.00

Kilometre figures are based on 4 weeks data