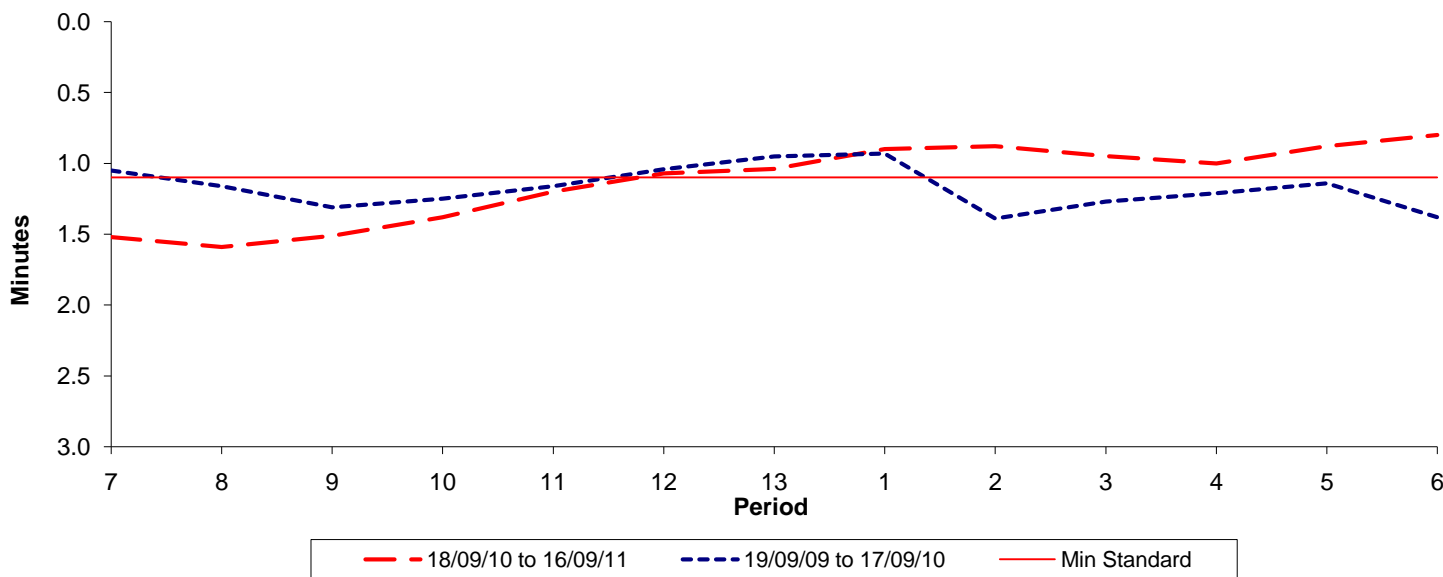




Reliability Performance (High Frequency)

Excess Waiting Time (minutes)

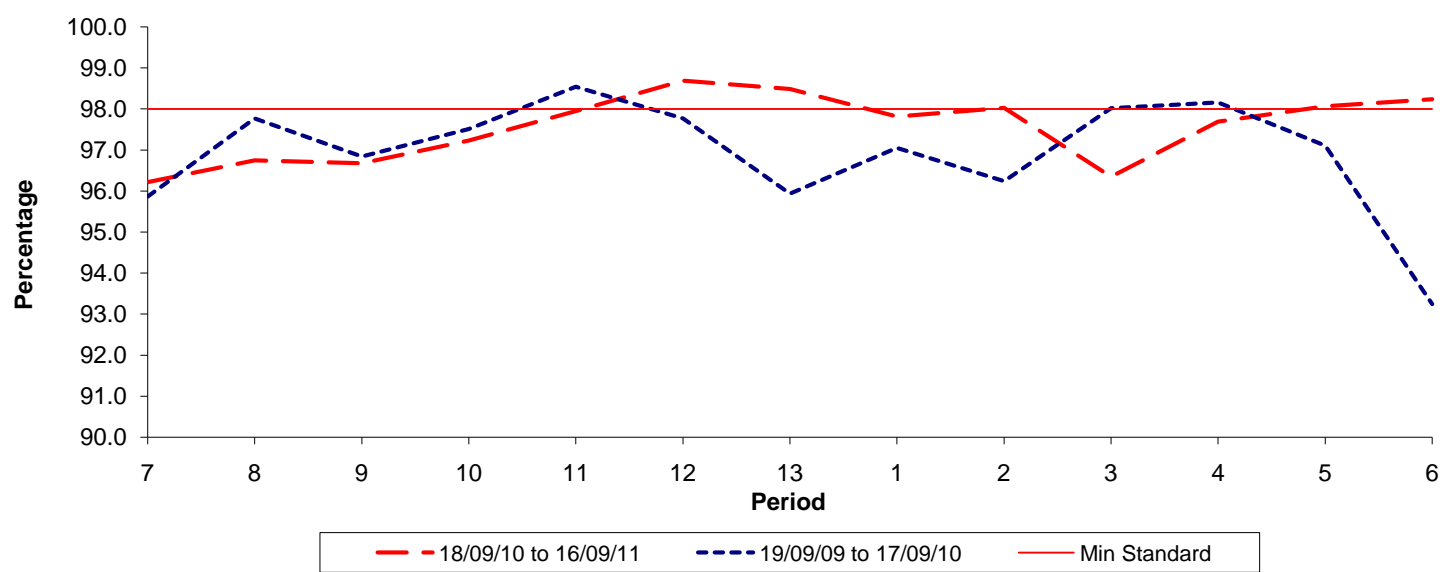


Date Range / Period	7	8	9	10	11	12	13	1	2	3	4	5	6
18/09/10 to 16/09/11	1.52	1.59	1.51	1.38	1.20	1.07	1.04	0.90	0.88	0.95	1.00	0.88	0.80
19/09/09 to 17/09/10	1.05	1.16	1.31	1.25	1.16	1.04	0.95	0.93	1.39	1.27	1.21	1.14	1.38
Min Standard	1.10	1.10	1.10	1.10	1.10	1.10	1.10	1.10	1.10	1.10	1.10	1.10	1.10

Excess Waiting Time figures are based on 12 weeks data

Kilometre Performance

% Kilometres Operated



Date Range / Period	7	8	9	10	11	12	13	1	2	3	4	5	6
18/09/10 to 16/09/11	96.22	96.75	96.68	97.23	97.95	98.69	98.49	97.82	98.03	96.35	97.69	98.07	98.24
19/09/09 to 17/09/10	95.86	97.77	96.84	97.51	98.54	97.77	95.93	97.05	96.24	98.02	98.16	97.10	93.24
Min Standard	98.00	98.00	98.00	98.00	98.00	98.00	98.00	98.00	98.00	98.00	98.00	98.00	98.00

Kilometre figures are based on 4 weeks data