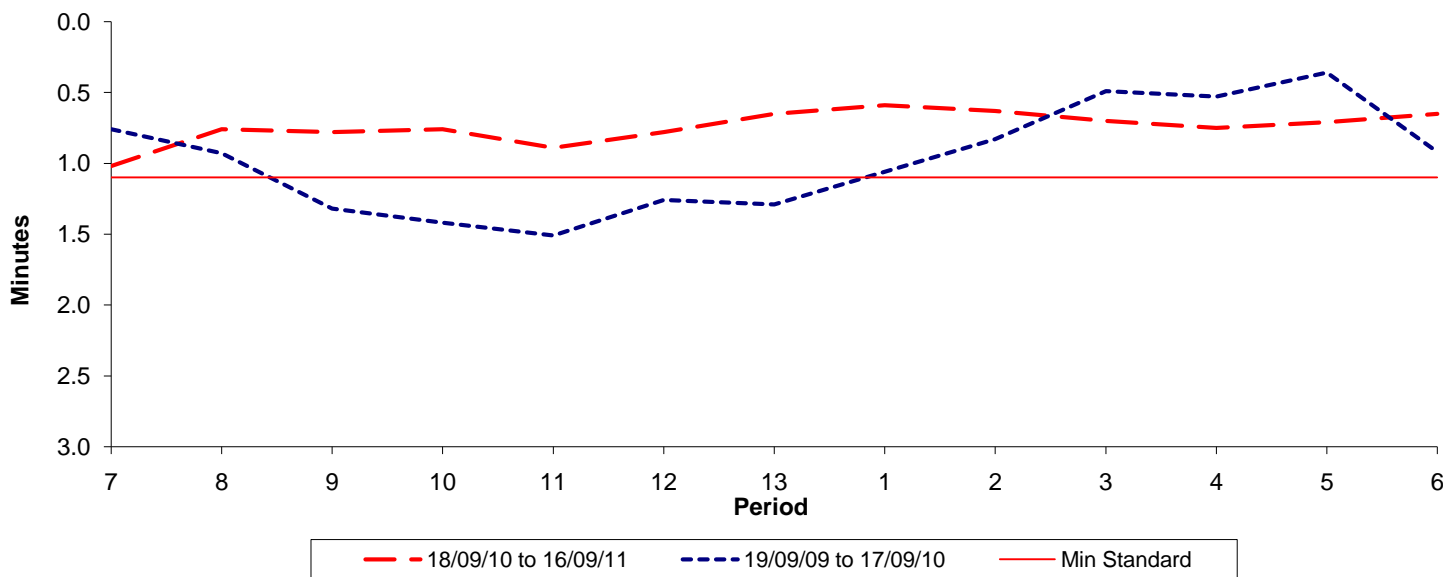




**Reliability Performance ( High Frequency )**

**Excess Waiting Time (minutes)**

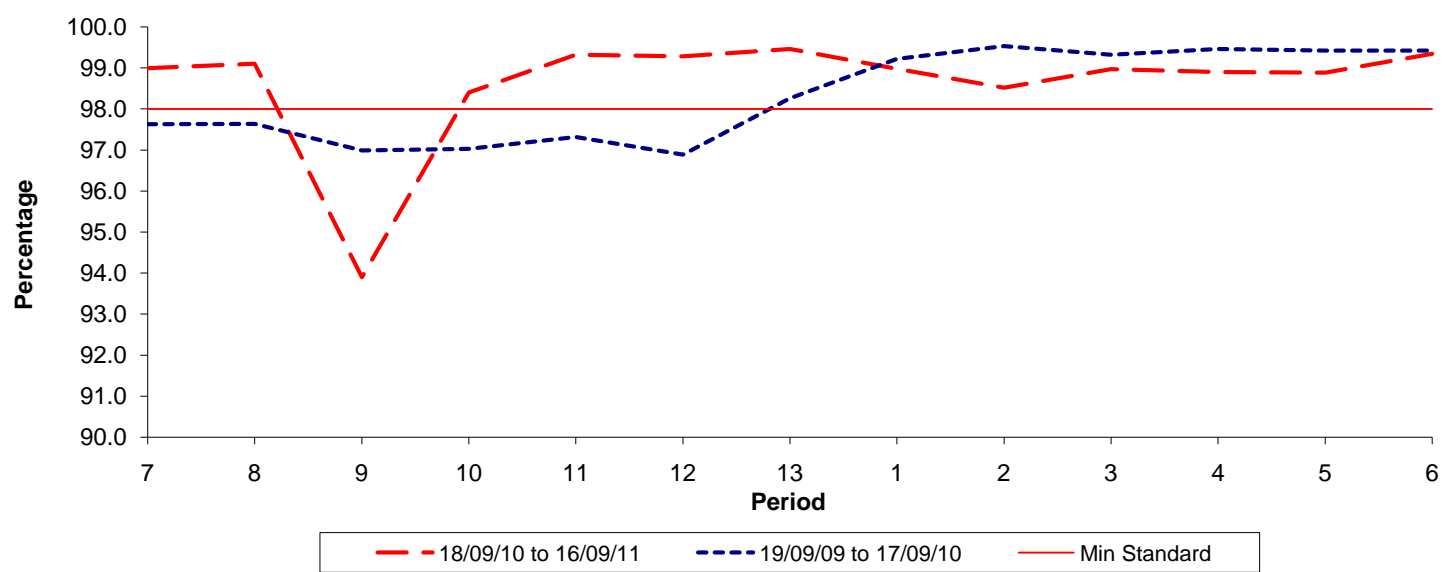


Date Range / Period	7	8	9	10	11	12	13	1	2	3	4	5	6
18/09/10 to 16/09/11	1.02	0.76	0.78	0.76	0.89	0.78	0.65	0.59	0.63	0.70	0.75	0.71	0.65
19/09/09 to 17/09/10	0.76	0.93	1.32	1.42	1.51	1.26	1.29	1.06	0.83	0.49	0.53	0.36	0.92
Min Standard	1.10	1.10	1.10	1.10	1.10	1.10	1.10	1.10	1.10	1.10	1.10	1.10	1.10

Excess Waiting Time figures are based on 12 weeks data

**Kilometre Performance**

**% Kilometres Operated**



Date Range / Period	7	8	9	10	11	12	13	1	2	3	4	5	6
18/09/10 to 16/09/11	98.99	99.10	93.90	98.40	99.32	99.28	99.46	98.98	98.52	98.97	98.90	98.88	99.34
19/09/09 to 17/09/10	97.63	97.64	96.99	97.03	97.32	96.89	98.26	99.22	99.53	99.32	99.46	99.42	99.42
Min Standard	98.00	98.00	98.00	98.00	98.00	98.00	98.00	98.00	98.00	98.00	98.00	98.00	98.00

Kilometre figures are based on 4 weeks data