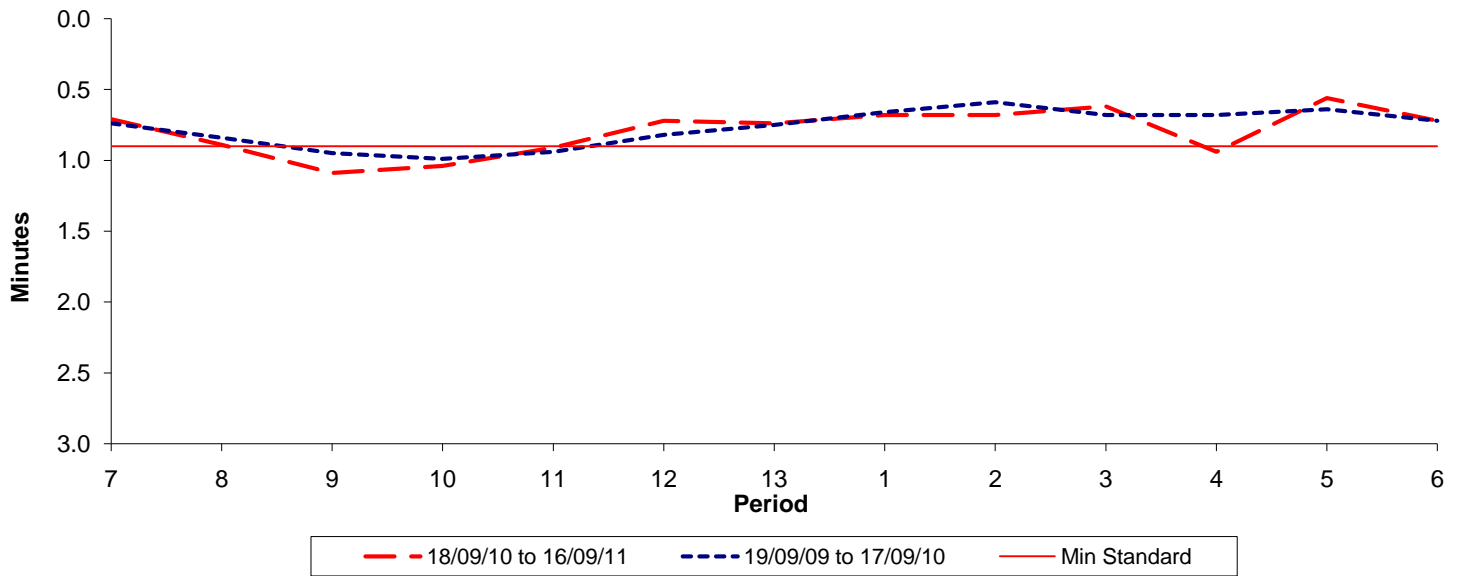




Reliability Performance (High Frequency)

Excess Waiting Time (minutes)

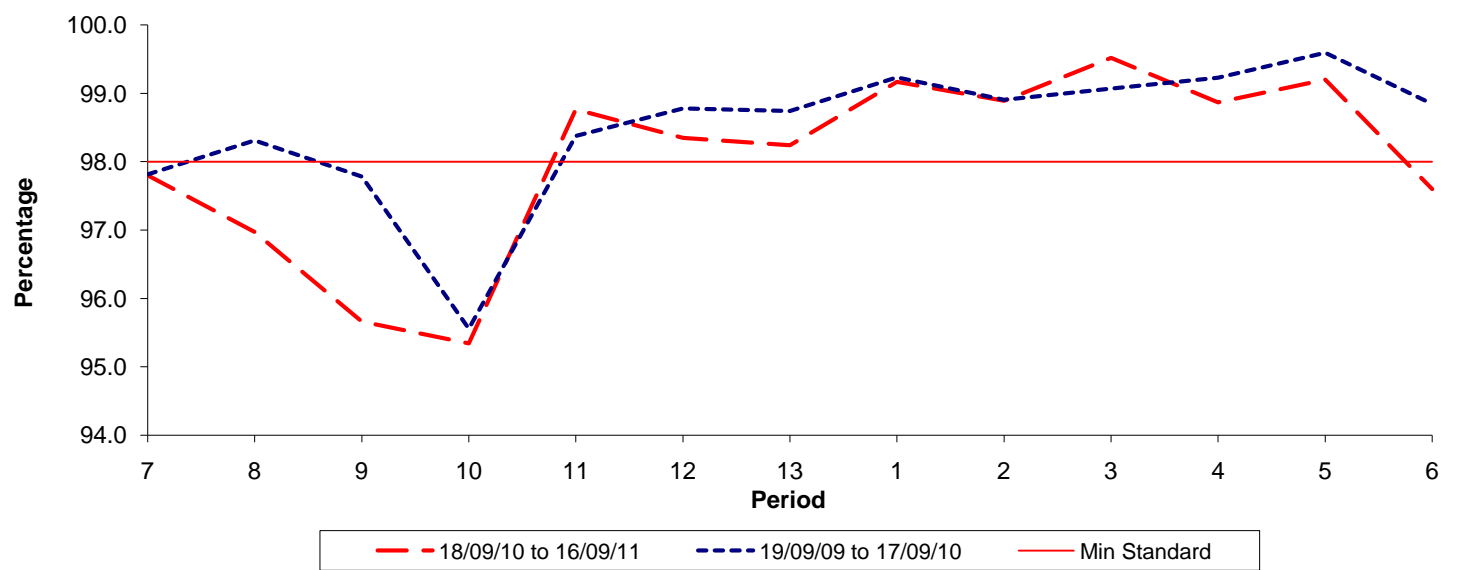


Date Range / Period	7	8	9	10	11	12	13	1	2	3	4	5	6
18/09/10 to 16/09/11	0.71	0.89	1.09	1.04	0.91	0.72	0.74	0.68	0.68	0.62	0.94	0.56	0.72
19/09/09 to 17/09/10	0.74	0.84	0.95	0.99	0.94	0.82	0.75	0.66	0.59	0.68	0.68	0.64	0.72
Min Standard	0.90	0.90	0.90	0.90	0.90	0.90	0.90	0.90	0.90	0.90	0.90	0.90	0.90

Excess Waiting Time figures are based on 12 weeks data

Kilometre Performance

% Kilometres Operated



Date Range / Period	7	8	9	10	11	12	13	1	2	3	4	5	6
18/09/10 to 16/09/11	97.80	96.97	95.66	95.34	98.77	98.35	98.24	99.17	98.89	99.52	98.87	99.20	97.60
19/09/09 to 17/09/10	97.82	98.31	97.78	95.56	98.38	98.78	98.74	99.24	98.91	99.07	99.23	99.60	98.85
Min Standard	98.00	98.00	98.00	98.00	98.00	98.00	98.00	98.00	98.00	98.00	98.00	98.00	98.00

Kilometre figures are based on 4 weeks data