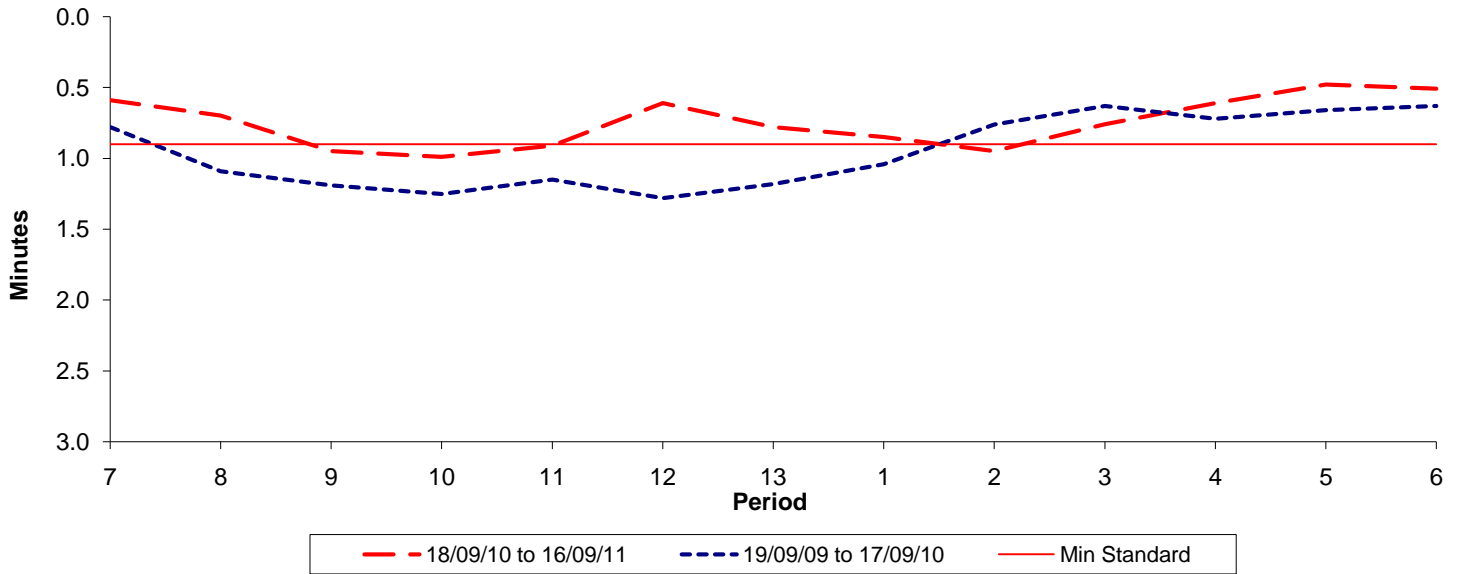




Reliability Performance (High Frequency)

Excess Waiting Time (minutes)

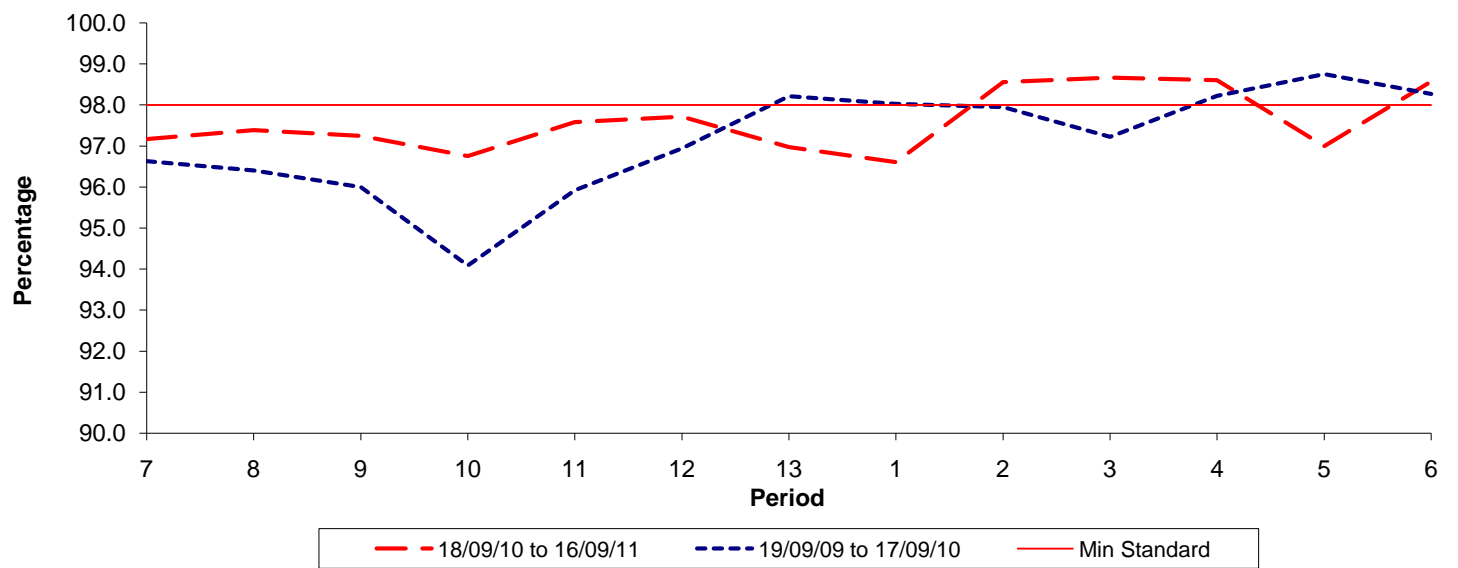


Date Range / Period	7	8	9	10	11	12	13	1	2	3	4	5	6
18/09/10 to 16/09/11	0.59	0.70	0.95	0.99	0.91	0.61	0.78	0.85	0.95	0.76	0.61	0.48	0.51
19/09/09 to 17/09/10	0.78	1.09	1.19	1.25	1.15	1.28	1.18	1.04	0.76	0.63	0.72	0.66	0.63
Min Standard	0.90	0.90	0.90	0.90	0.90	0.90	0.90	0.90	0.90	0.90	0.90	0.90	0.90

Excess Waiting Time figures are based on 12 weeks data

Kilometre Performance

% Kilometres Operated



Date Range / Period	7	8	9	10	11	12	13	1	2	3	4	5	6
18/09/10 to 16/09/11	97.17	97.39	97.25	96.76	97.58	97.72	96.98	96.61	98.56	98.67	98.61	97.00	98.58
19/09/09 to 17/09/10	96.63	96.40	96.00	94.08	95.92	96.94	98.21	98.03	97.95	97.23	98.22	98.75	98.27
Min Standard	98.00	98.00	98.00	98.00	98.00	98.00	98.00	98.00	98.00	98.00	98.00	98.00	98.00

Kilometre figures are based on 4 weeks data