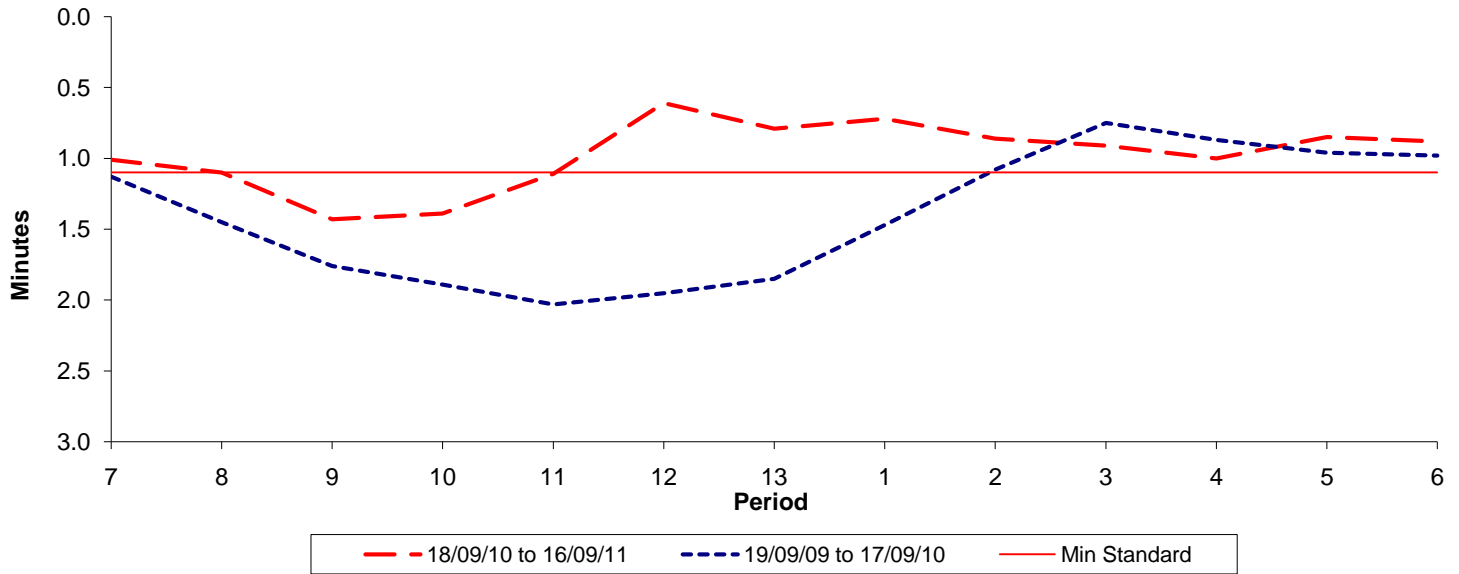




Reliability Performance (High Frequency)

Excess Waiting Time (minutes)

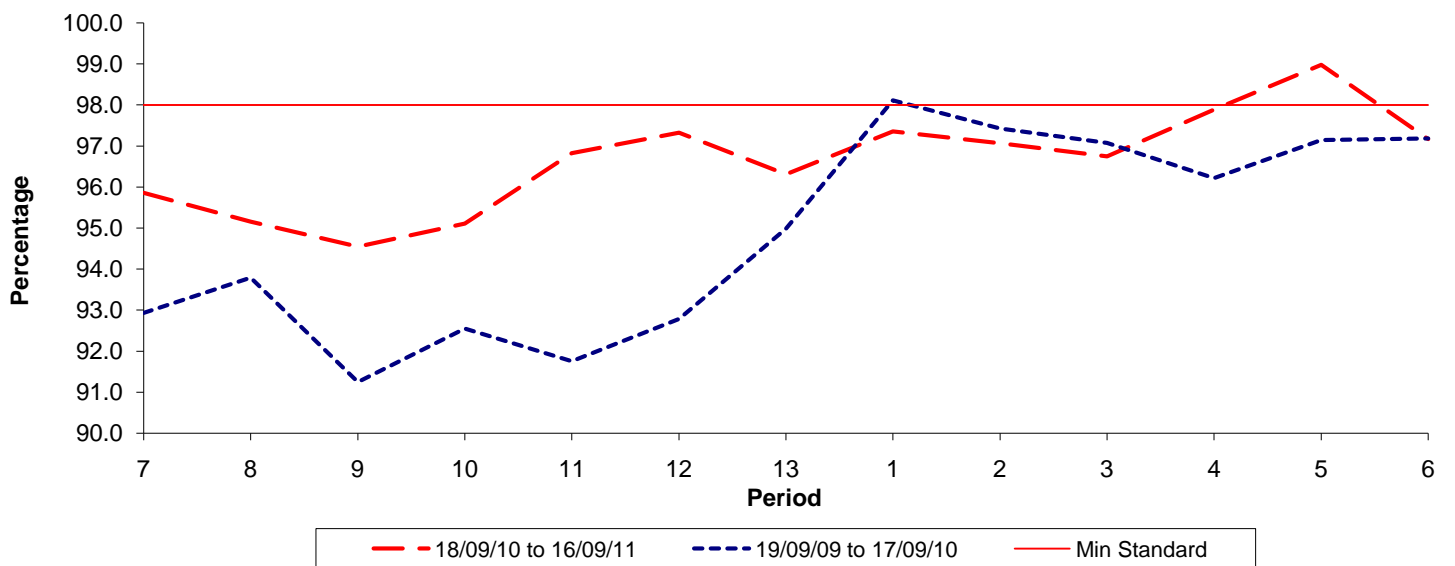


Date Range / Period	7	8	9	10	11	12	13	1	2	3	4	5	6
18/09/10 to 16/09/11	1.01	1.10	1.43	1.39	1.11	0.61	0.79	0.72	0.86	0.91	1.00	0.85	0.88
19/09/09 to 17/09/10	1.13	1.45	1.76	1.89	2.03	1.95	1.85	1.47	1.08	0.75	0.87	0.96	0.98
Min Standard	1.10	1.10	1.10	1.10	1.10	1.10	1.10	1.10	1.10	1.10	1.10	1.10	1.10

Excess Waiting Time figures are based on 12 weeks data

Kilometre Performance

% Kilometres Operated



Date Range / Period	7	8	9	10	11	12	13	1	2	3	4	5	6
18/09/10 to 16/09/11	95.86	95.16	94.55	95.11	96.83	97.32	96.31	97.36	97.07	96.75	97.89	98.98	97.17
19/09/09 to 17/09/10	92.93	93.79	91.24	92.55	91.75	92.78	94.98	98.11	97.42	97.07	96.21	97.14	97.19
Min Standard	98.00	98.00	98.00	98.00	98.00	98.00	98.00	98.00	98.00	98.00	98.00	98.00	98.00

Kilometre figures are based on 4 weeks data