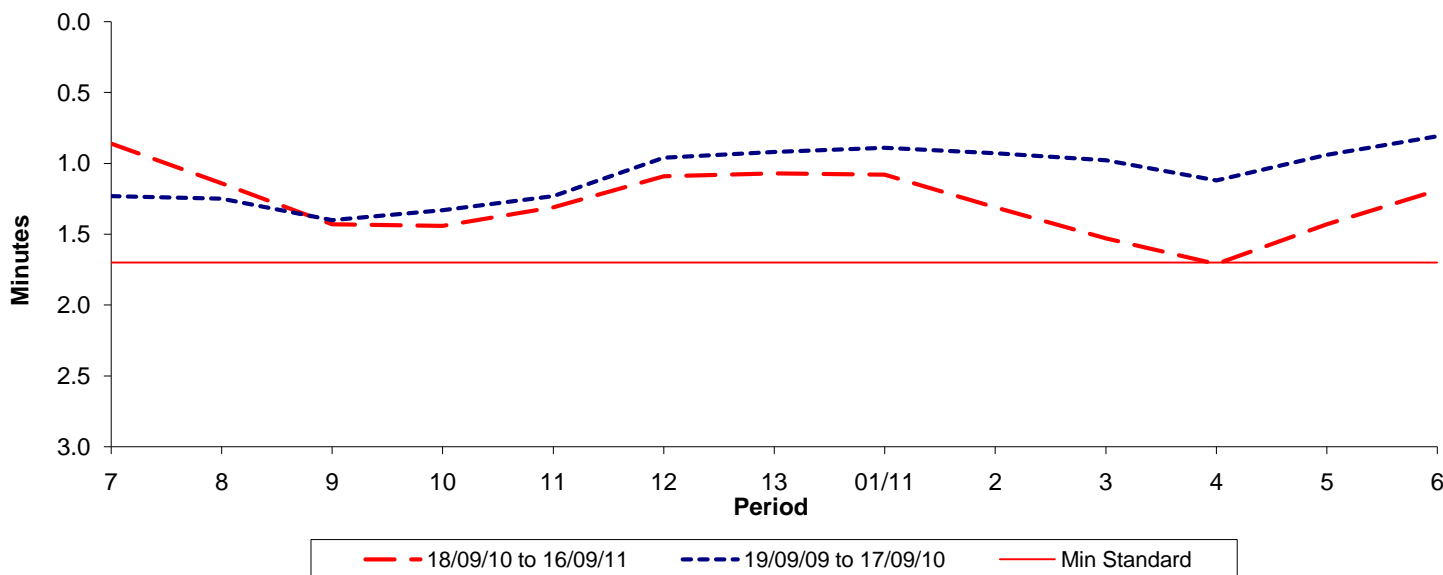




Reliability Performance (High Frequency)

Excess Waiting Time (minutes)

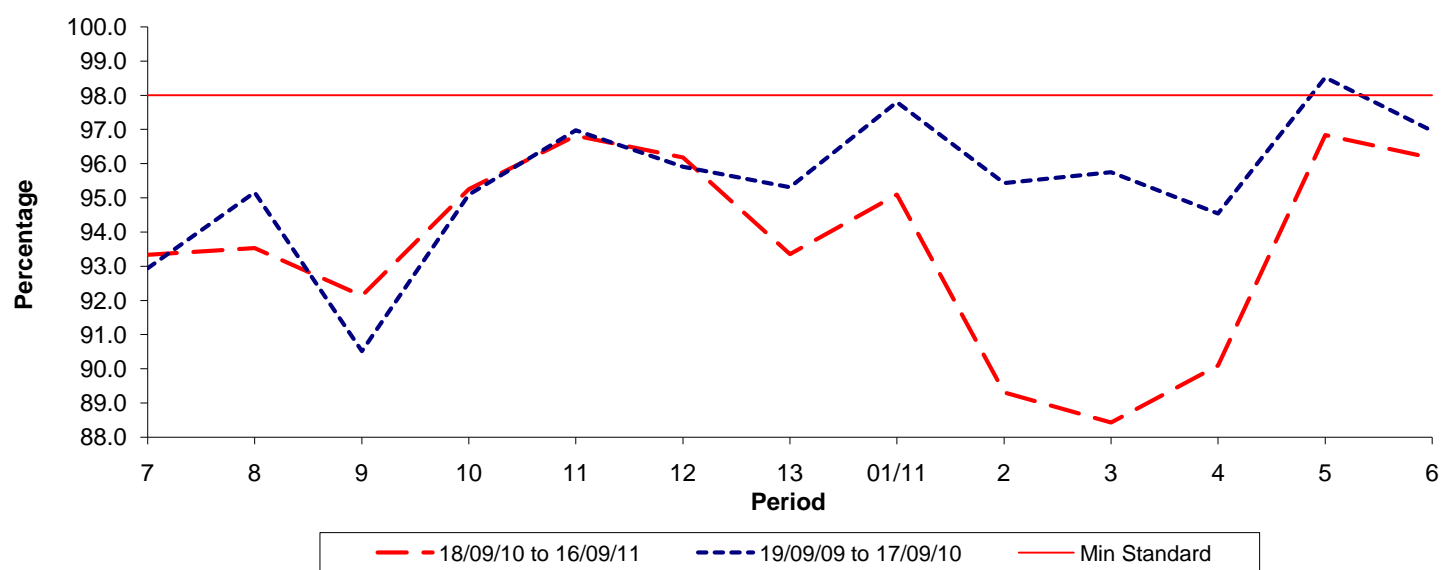


Date Range / Period	7	8	9	10	11	12	13	01/11	2	3	4	5	6
18/09/10 to 16/09/11	0.86	1.14	1.43	1.44	1.31	1.09	1.07	1.08	1.31	1.53	1.71	1.43	1.19
19/09/09 to 17/09/10	1.23	1.25	1.40	1.33	1.23	0.96	0.92	0.89	0.93	0.98	1.12	0.94	0.81
Min Standard	1.70	1.70	1.70	1.70	1.70	1.70	1.70	1.70	1.70	1.70	1.70	1.70	1.70

Excess Waiting Time figures are based on 12 weeks data

Kilometre Performance

% Kilometres Operated



Date Range / Period	7	8	9	10	11	12	13	01/11	2	3	4	5	6
18/09/10 to 16/09/11	93.34	93.53	92.14	95.26	96.82	96.18	93.36	95.10	89.31	88.43	90.10	96.84	96.17
19/09/09 to 17/09/10	92.94	95.16	90.51	95.09	96.97	95.91	95.31	97.80	95.43	95.75	94.54	98.52	96.96
Min Standard	98.00	98.00	98.00	98.00	98.00	98.00	98.00	98.00	98.00	98.00	98.00	98.00	98.00

Kilometre figures are based on 4 weeks data