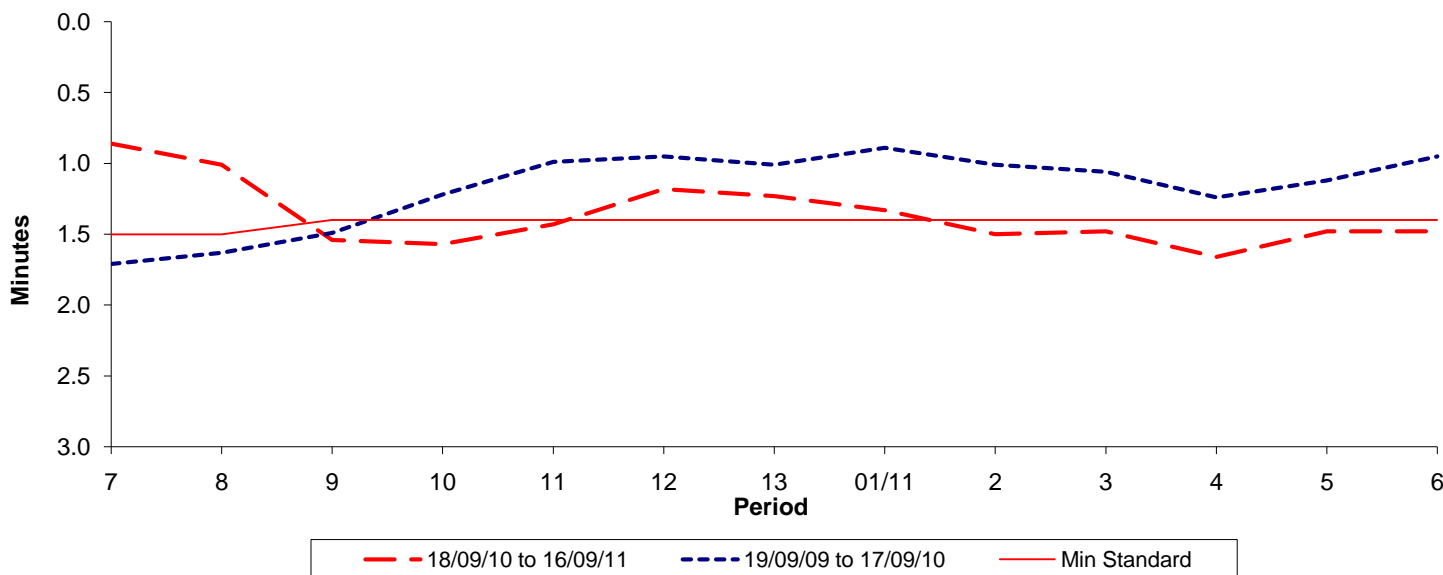




**Reliability Performance ( High Frequency )**

**Excess Waiting Time (minutes)**

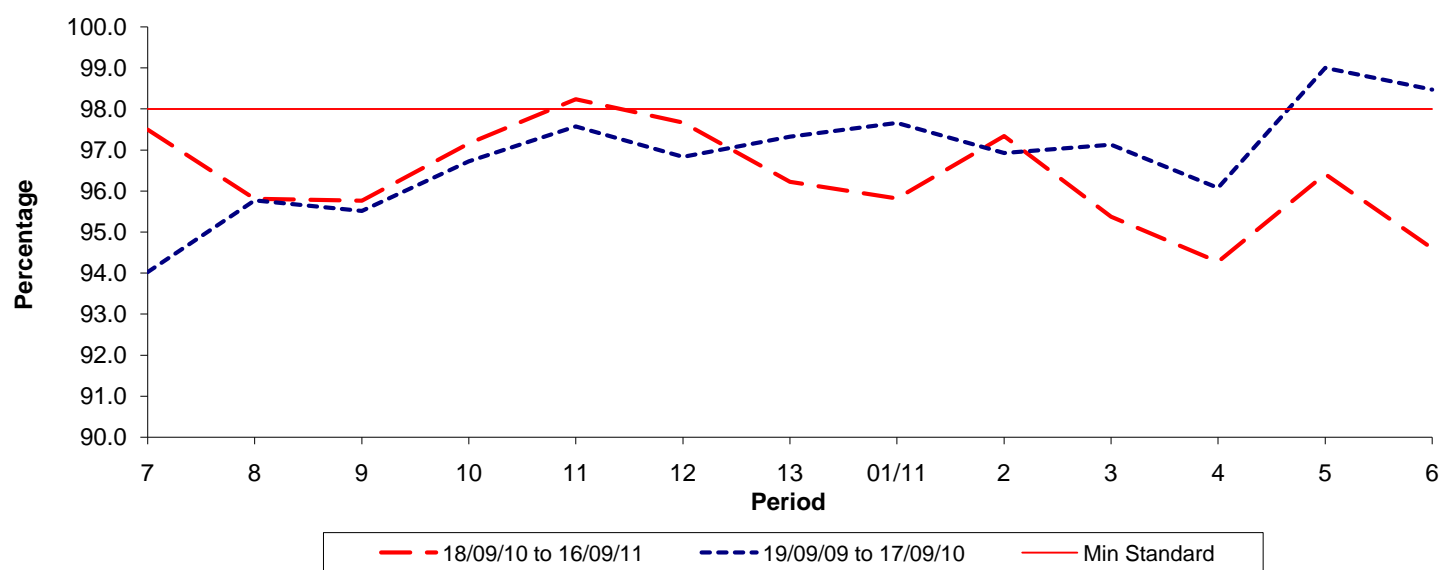


Date Range / Period	7	8	9	10	11	12	13	01/11	2	3	4	5	6
18/09/10 to 16/09/11	0.86	1.01	1.54	1.57	1.43	1.18	1.23	1.33	1.50	1.48	1.66	1.48	1.48
19/09/09 to 17/09/10	1.71	1.63	1.49	1.22	0.99	0.95	1.01	0.89	1.01	1.06	1.24	1.12	0.95
Min Standard	1.50	1.50	1.40	1.40	1.40	1.40	1.40	1.40	1.40	1.40	1.40	1.40	1.40

Excess Waiting Time figures are based on 12 weeks data

**Kilometre Performance**

**% Kilometres Operated**



Date Range / Period	7	8	9	10	11	12	13	01/11	2	3	4	5	6
18/09/10 to 16/09/11	97.50	95.81	95.76	97.16	98.24	97.67	96.22	95.82	97.34	95.37	94.27	96.41	94.60
19/09/09 to 17/09/10	94.02	95.77	95.51	96.72	97.57	96.83	97.32	97.66	96.92	97.13	96.07	99.00	98.47
Min Standard	98.00	98.00	98.00	98.00	98.00	98.00	98.00	98.00	98.00	98.00	98.00	98.00	98.00

Kilometre figures are based on 4 weeks data