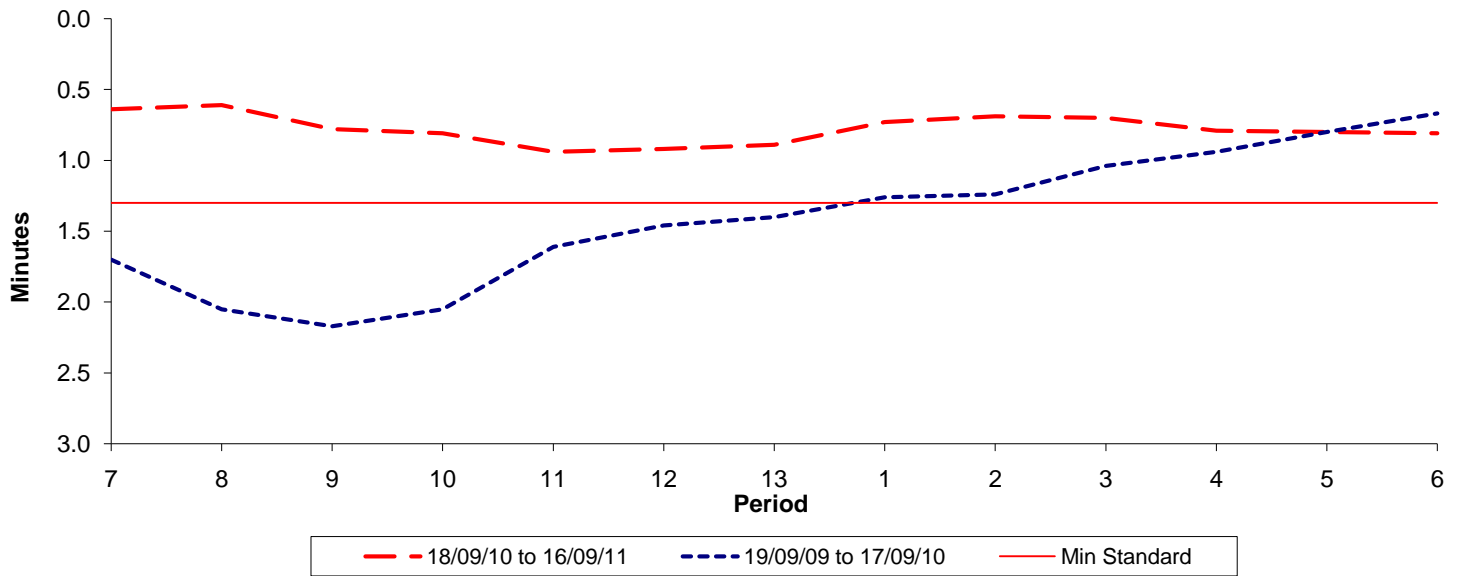




**Reliability Performance ( High Frequency )**

**Excess Waiting Time (minutes)**

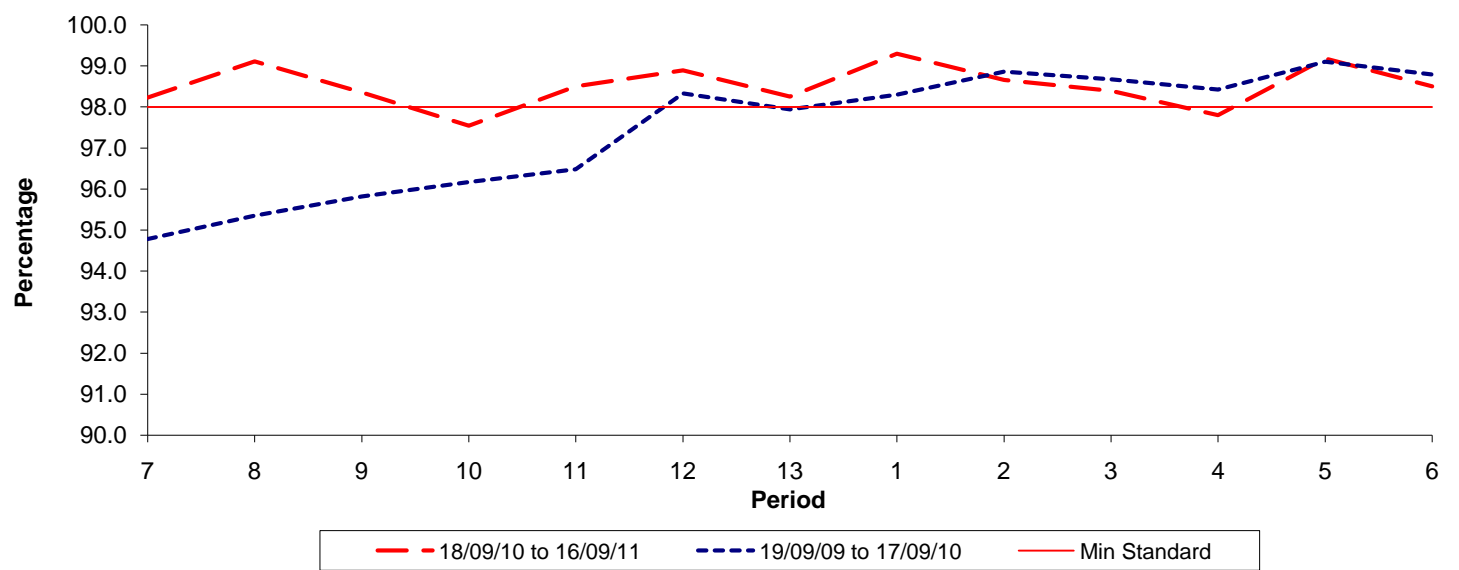


Date Range / Period	7	8	9	10	11	12	13	1	2	3	4	5	6
18/09/10 to 16/09/11	0.64	0.61	0.78	0.81	0.94	0.92	0.89	0.73	0.69	0.70	0.79	0.80	0.81
19/09/09 to 17/09/10	1.70	2.05	2.17	2.05	1.61	1.46	1.40	1.26	1.24	1.04	0.94	0.80	0.67
Min Standard	1.30	1.30	1.30	1.30	1.30	1.30	1.30	1.30	1.30	1.30	1.30	1.30	1.30

Excess Waiting Time figures are based on 12 weeks data

**Kilometre Performance**

**% Kilometres Operated**



Date Range / Period	7	8	9	10	11	12	13	1	2	3	4	5	6
18/09/10 to 16/09/11	98.23	99.11	98.35	97.54	98.50	98.89	98.25	99.30	98.66	98.39	97.80	99.18	98.50
19/09/09 to 17/09/10	94.78	95.35	95.82	96.17	96.48	98.33	97.94	98.30	98.86	98.67	98.42	99.10	98.79
Min Standard	98.00	98.00	98.00	98.00	98.00	98.00	98.00	98.00	98.00	98.00	98.00	98.00	98.00

Kilometre figures are based on 4 weeks data