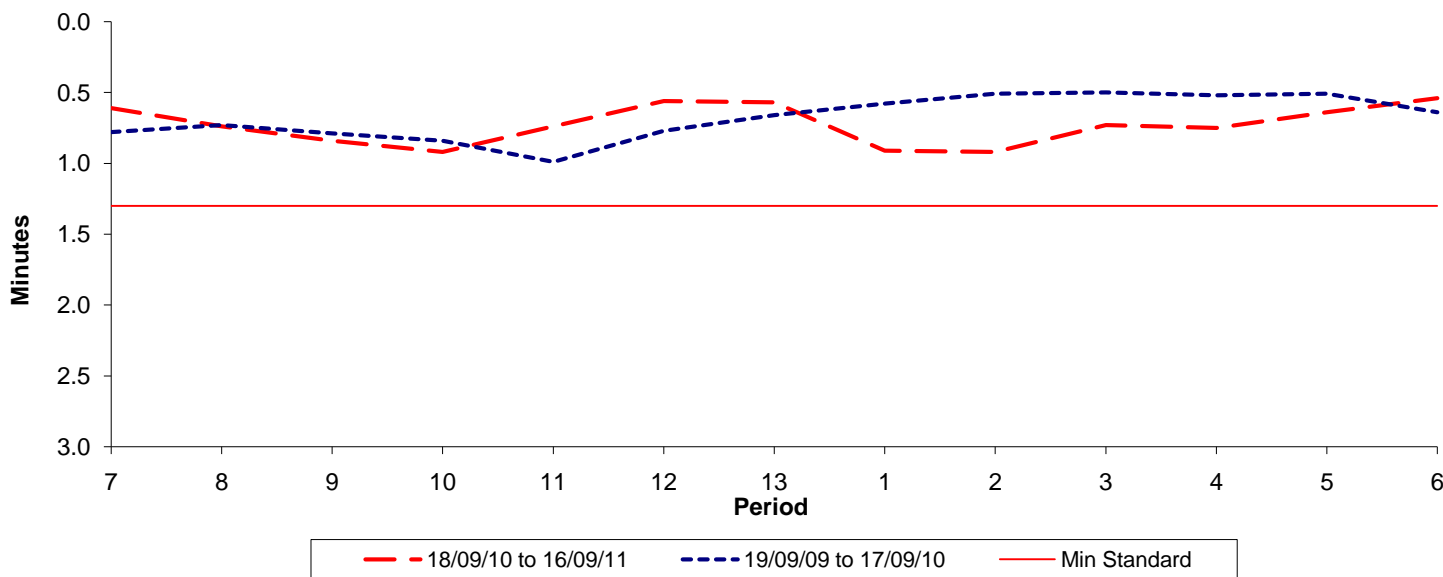




Reliability Performance (High Frequency)

Excess Waiting Time (minutes)

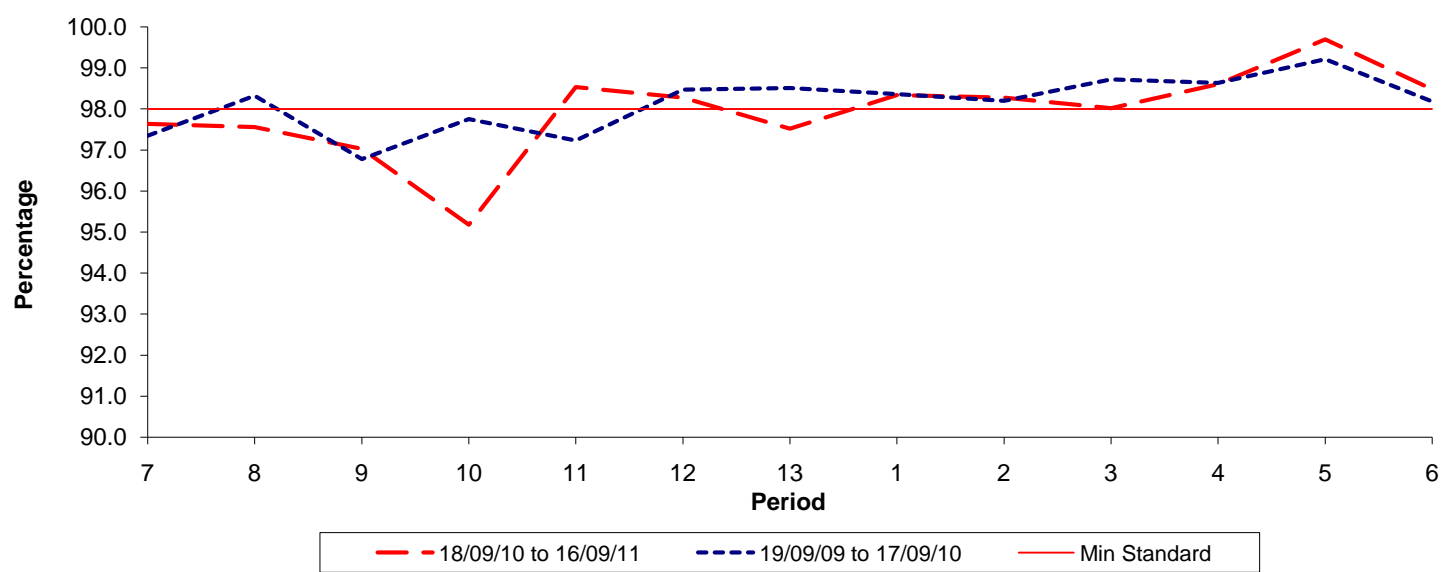


Date Range / Period	7	8	9	10	11	12	13	1	2	3	4	5	6
18/09/10 to 16/09/11	0.61	0.74	0.84	0.92	0.74	0.56	0.57	0.91	0.92	0.73	0.75	0.64	0.54
19/09/09 to 17/09/10	0.78	0.73	0.79	0.84	0.99	0.77	0.66	0.58	0.51	0.50	0.52	0.51	0.64
Min Standard	1.30	1.30	1.30	1.30	1.30	1.30	1.30	1.30	1.30	1.30	1.30	1.30	1.30

Excess Waiting Time figures are based on 12 weeks data

Kilometre Performance

% Kilometres Operated



Date Range / Period	7	8	9	10	11	12	13	1	2	3	4	5	6
18/09/10 to 16/09/11	97.64	97.56	97.03	95.18	98.54	98.28	97.52	98.34	98.28	98.02	98.61	99.70	98.48
19/09/09 to 17/09/10	97.35	98.32	96.78	97.75	97.23	98.47	98.51	98.36	98.20	98.72	98.63	99.21	98.18
Min Standard	98.00	98.00	98.00	98.00	98.00	98.00	98.00	98.00	98.00	98.00	98.00	98.00	98.00

Kilometre figures are based on 4 weeks data