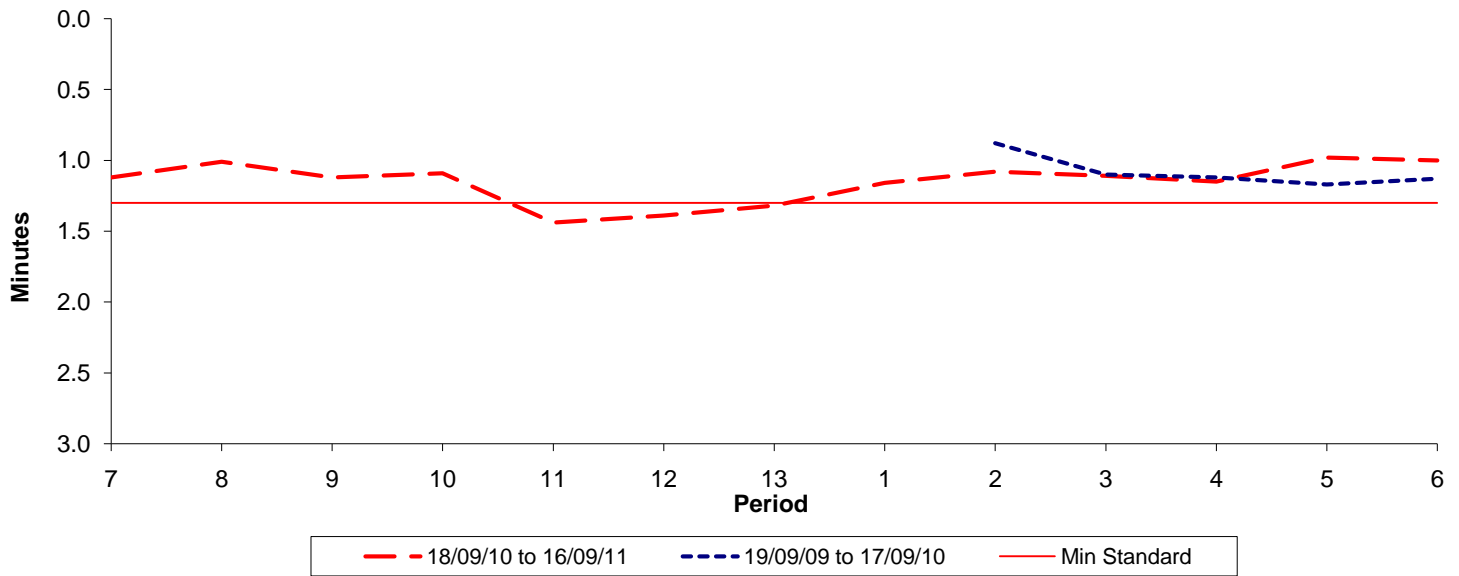




Reliability Performance (High Frequency)

Excess Waiting Time (minutes)

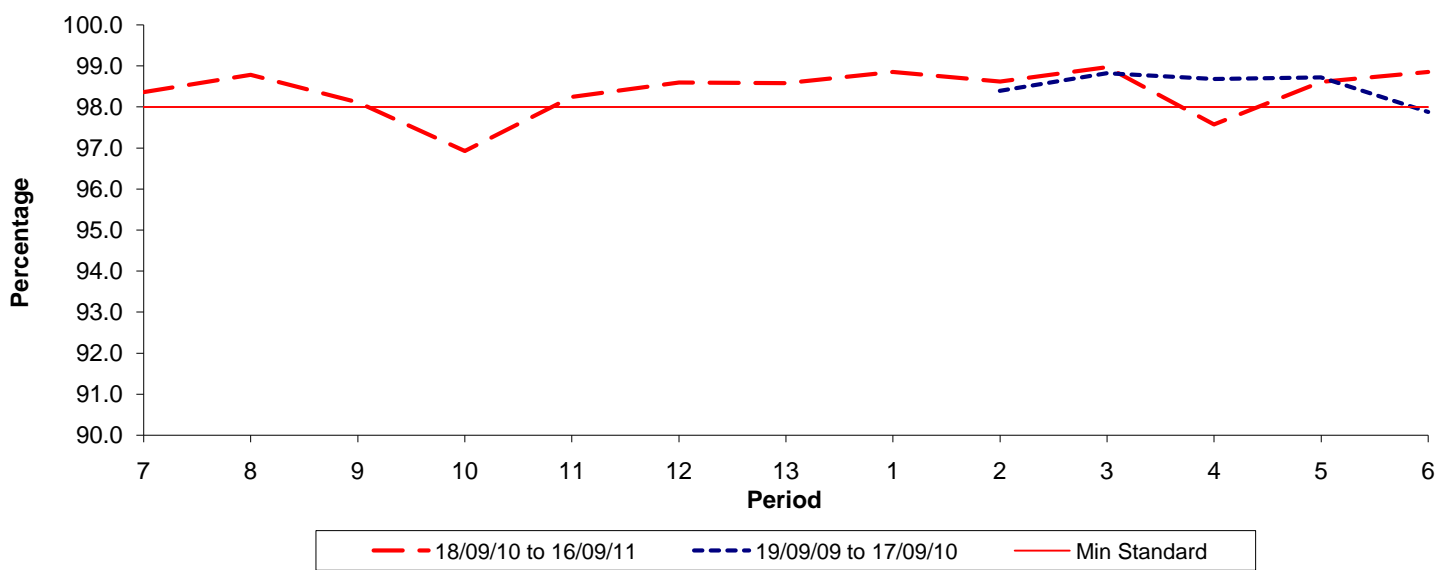


Date Range / Period	7	8	9	10	11	12	13	1	2	3	4	5	6
18/09/10 to 16/09/11	1.12	1.01	1.12	1.09	1.44	1.39	1.32	1.16	1.08	1.11	1.15	0.98	1.00
19/09/09 to 17/09/10									0.88	1.10	1.12	1.17	1.13
Min Standard	1.30	1.30	1.30	1.30	1.30	1.30	1.30	1.30	1.30	1.30	1.30	1.30	1.30

Excess Waiting Time figures are based on 12 weeks data

Kilometre Performance

% Kilometres Operated



Date Range / Period	7	8	9	10	11	12	13	1	2	3	4	5	6
18/09/10 to 16/09/11	98.36	98.78	98.11	96.92	98.25	98.59	98.58	98.85	98.62	98.97	97.57	98.61	98.85
19/09/09 to 17/09/10									98.39	98.83	98.69	98.73	97.88
Min Standard	98.00	98.00	98.00	98.00	98.00	98.00	98.00	98.00	98.00	98.00	98.00	98.00	98.00

Kilometre figures are based on 4 weeks data