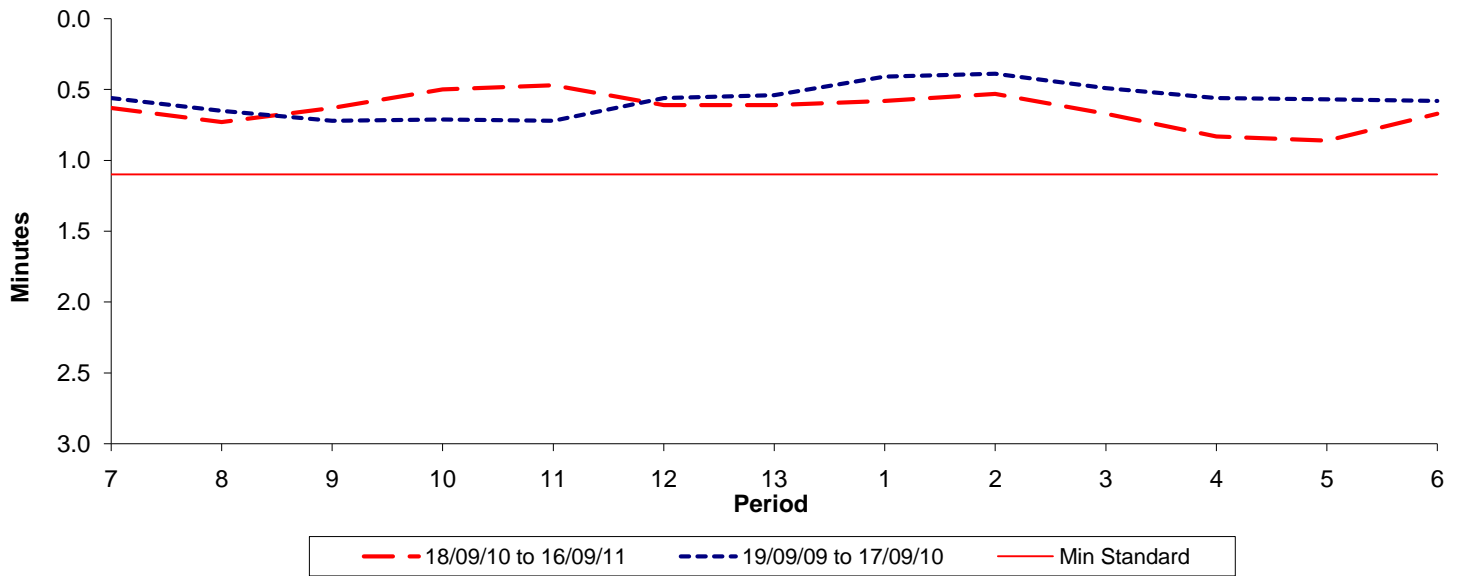




**Reliability Performance ( High Frequency )**

Excess Waiting Time (minutes)

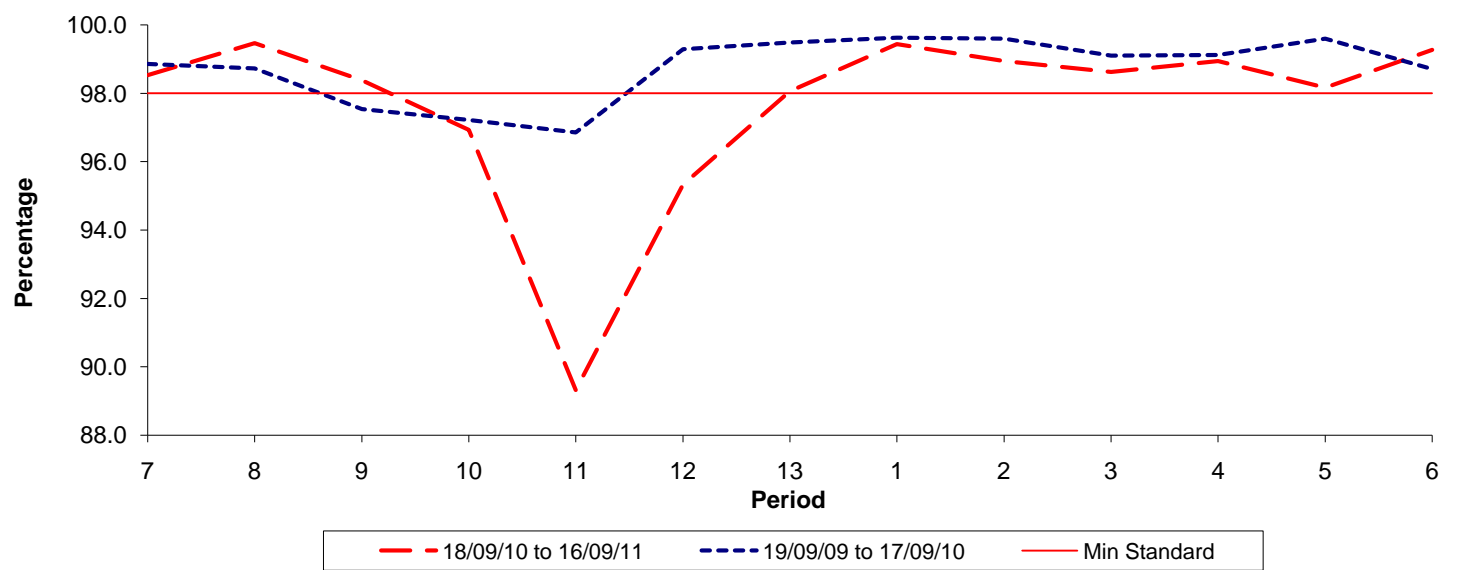


Date Range / Period	7	8	9	10	11	12	13	1	2	3	4	5	6
18/09/10 to 16/09/11	0.63	0.73	0.63	0.50	0.47	0.61	0.61	0.58	0.53	0.67	0.83	0.86	0.67
19/09/09 to 17/09/10	0.56	0.65	0.72	0.71	0.72	0.56	0.54	0.41	0.39	0.49	0.56	0.57	0.58
Min Standard	1.10	1.10	1.10	1.10	1.10	1.10	1.10	1.10	1.10	1.10	1.10	1.10	1.10

Excess Waiting Time figures are based on 12 weeks data

**Kilometre Performance**

% Kilometres Operated



Date Range / Period	7	8	9	10	11	12	13	1	2	3	4	5	6
18/09/10 to 16/09/11	98.53	99.47	98.38	96.93	89.31	95.32	98.06	99.44	98.94	98.63	98.94	98.17	99.27
19/09/09 to 17/09/10	98.86	98.72	97.53	97.21	96.85	99.28	99.48	99.62	99.59	99.10	99.12	99.59	98.70
Min Standard	98.00	98.00	98.00	98.00	98.00	98.00	98.00	98.00	98.00	98.00	98.00	98.00	98.00

Kilometre figures are based on 4 weeks data