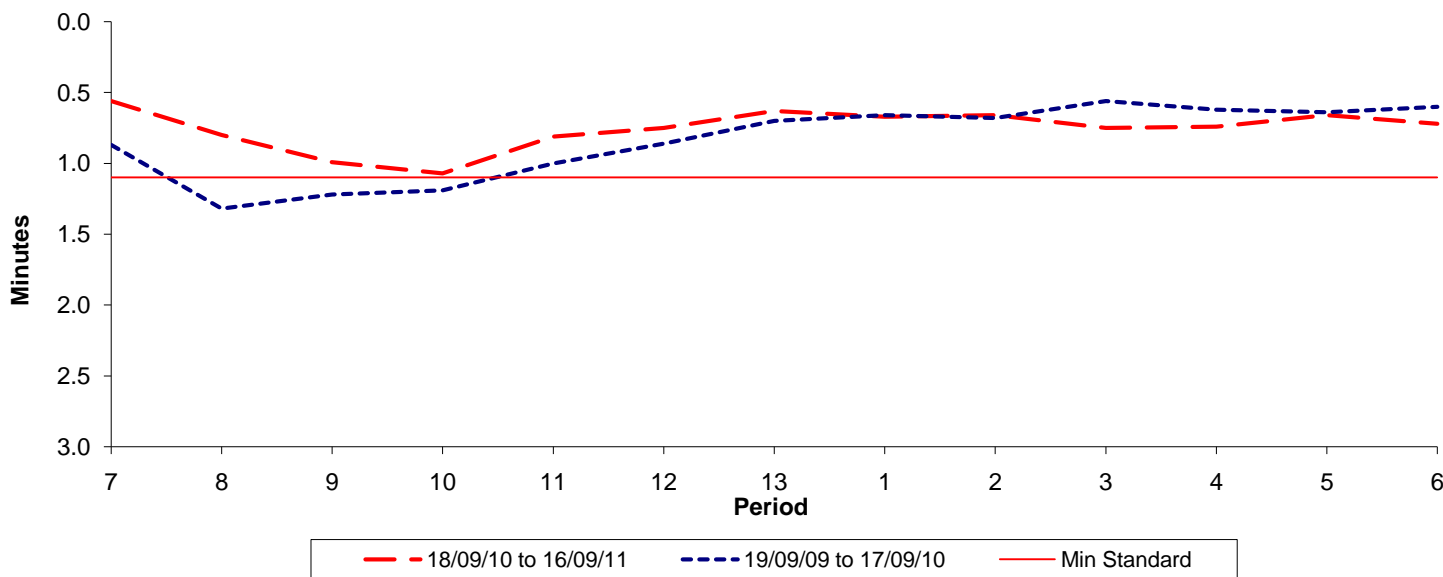




Reliability Performance (High Frequency)

Excess Waiting Time (minutes)

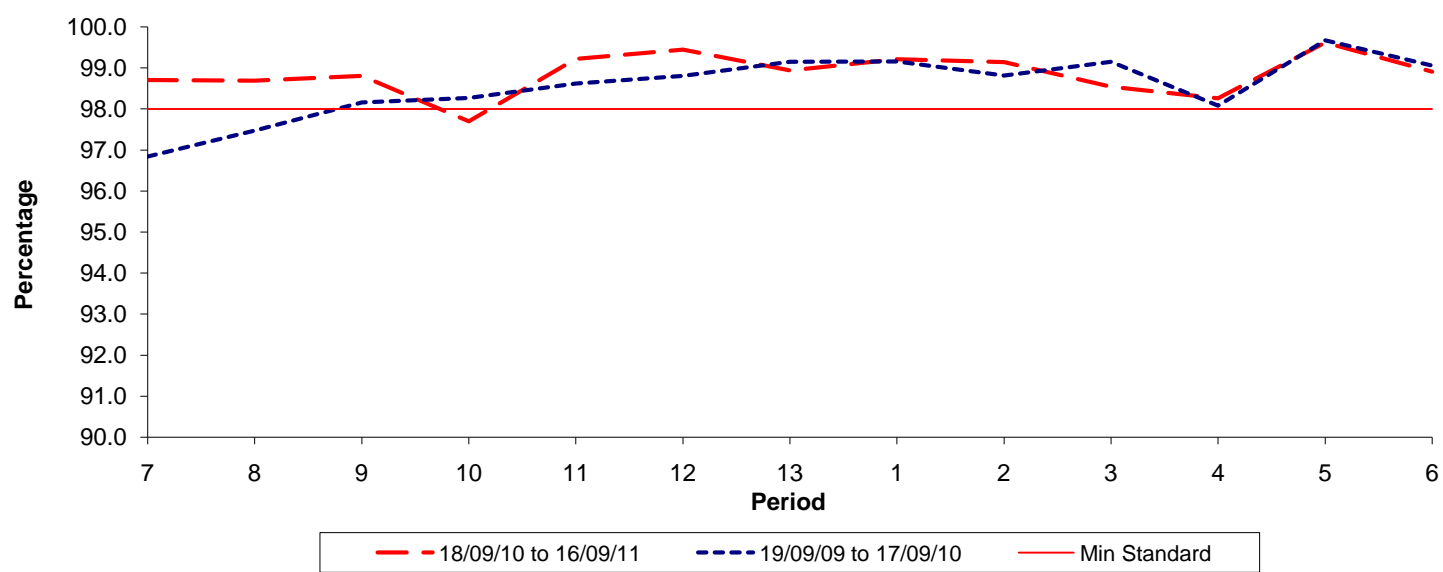


Date Range / Period	7	8	9	10	11	12	13	1	2	3	4	5	6
18/09/10 to 16/09/11	0.56	0.80	0.99	1.07	0.81	0.75	0.63	0.67	0.66	0.75	0.74	0.66	0.72
19/09/09 to 17/09/10	0.87	1.32	1.22	1.19	1.00	0.86	0.70	0.66	0.68	0.56	0.62	0.64	0.60
Min Standard	1.10	1.10	1.10	1.10	1.10	1.10	1.10	1.10	1.10	1.10	1.10	1.10	1.10

Excess Waiting Time figures are based on 12 weeks data

Kilometre Performance

% Kilometres Operated



Date Range / Period	7	8	9	10	11	12	13	1	2	3	4	5	6
18/09/10 to 16/09/11	98.71	98.69	98.81	97.70	99.22	99.44	98.94	99.21	99.14	98.54	98.26	99.62	98.91
19/09/09 to 17/09/10	96.84	97.47	98.16	98.27	98.62	98.81	99.15	99.16	98.81	99.15	98.08	99.67	99.06
Min Standard	98.00	98.00	98.00	98.00	98.00	98.00	98.00	98.00	98.00	98.00	98.00	98.00	98.00

Kilometre figures are based on 4 weeks data