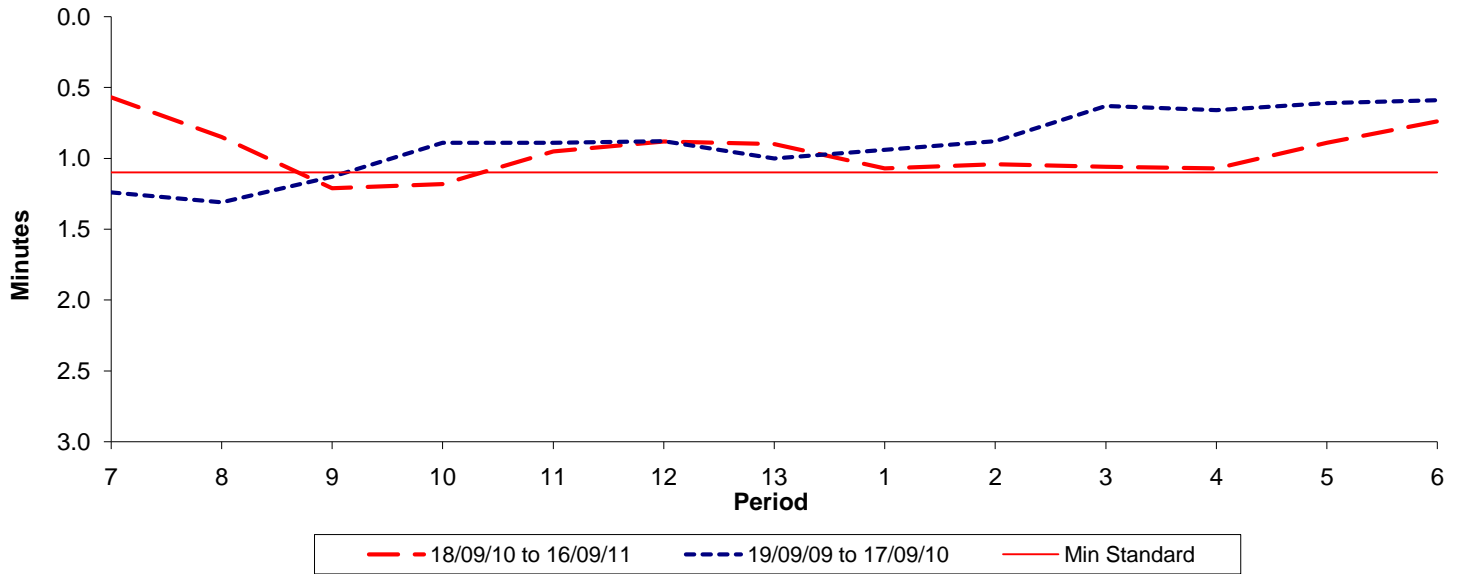




Reliability Performance (High Frequency)

Excess Waiting Time (minutes)

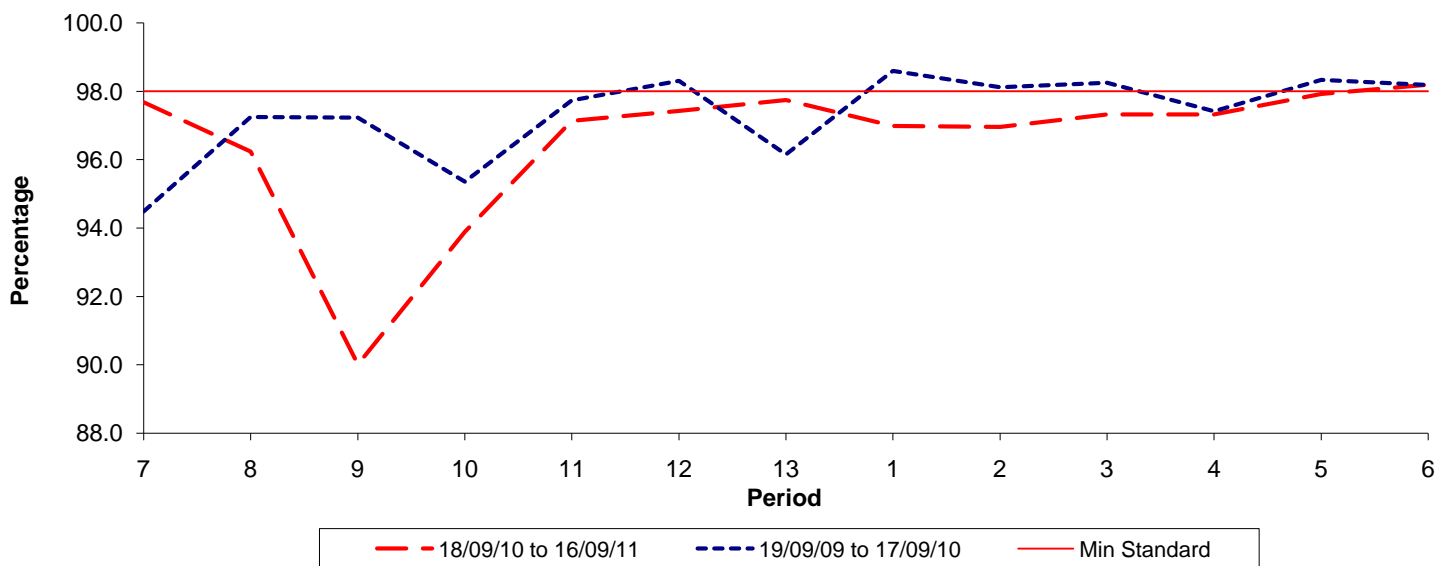


Date Range / Period	7	8	9	10	11	12	13	1	2	3	4	5	6
18/09/10 to 16/09/11	0.57	0.85	1.21	1.18	0.95	0.88	0.90	1.07	1.04	1.06	1.07	0.89	0.74
19/09/09 to 17/09/10	1.24	1.31	1.13	0.89	0.89	0.88	1.00	0.94	0.88	0.63	0.66	0.61	0.59
Min Standard	1.10	1.10	1.10	1.10	1.10	1.10	1.10	1.10	1.10	1.10	1.10	1.10	1.10

Excess Waiting Time figures are based on 12 weeks data

Kilometre Performance

% Kilometres Operated



Date Range / Period	7	8	9	10	11	12	13	1	2	3	4	5	6
18/09/10 to 16/09/11	97.67	96.24	90.01	93.88	97.13	97.42	97.74	96.98	96.95	97.32	97.32	97.92	98.19
19/09/09 to 17/09/10	94.48	97.25	97.23	95.35	97.74	98.31	96.15	98.60	98.12	98.25	97.42	98.34	98.18
Min Standard	98.00	98.00	98.00	98.00	98.00	98.00	98.00	98.00	98.00	98.00	98.00	98.00	98.00

Kilometre figures are based on 4 weeks data