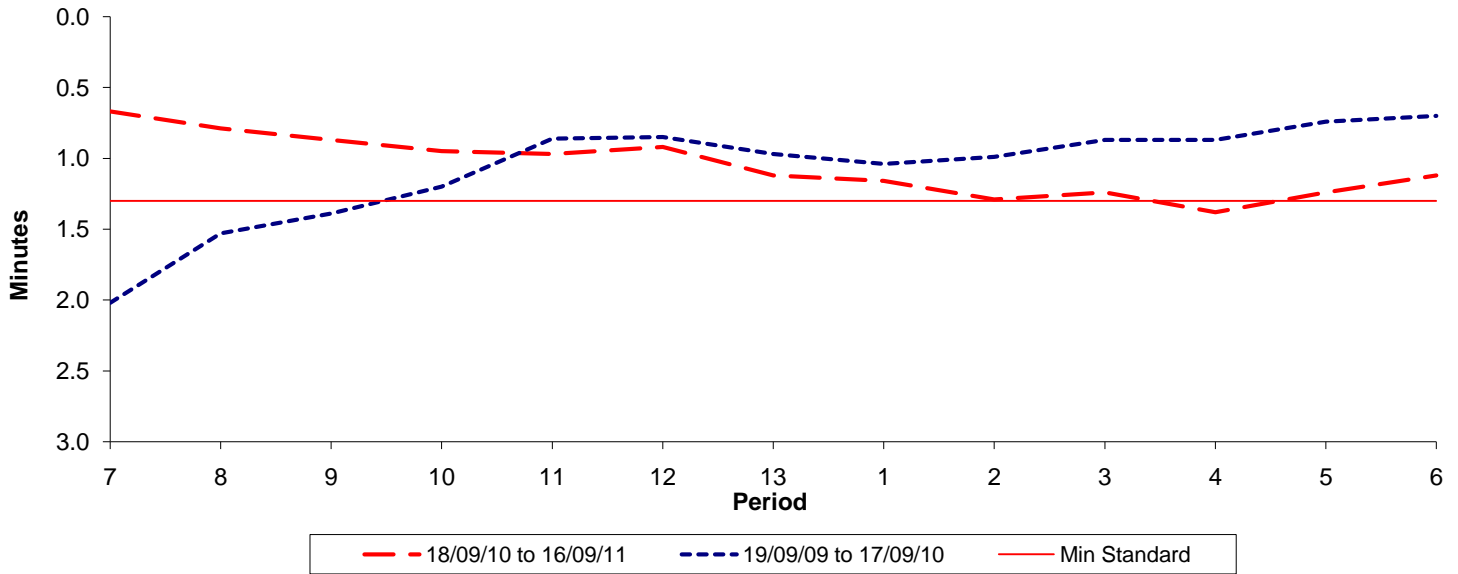




Reliability Performance (High Frequency)

Excess Waiting Time (minutes)

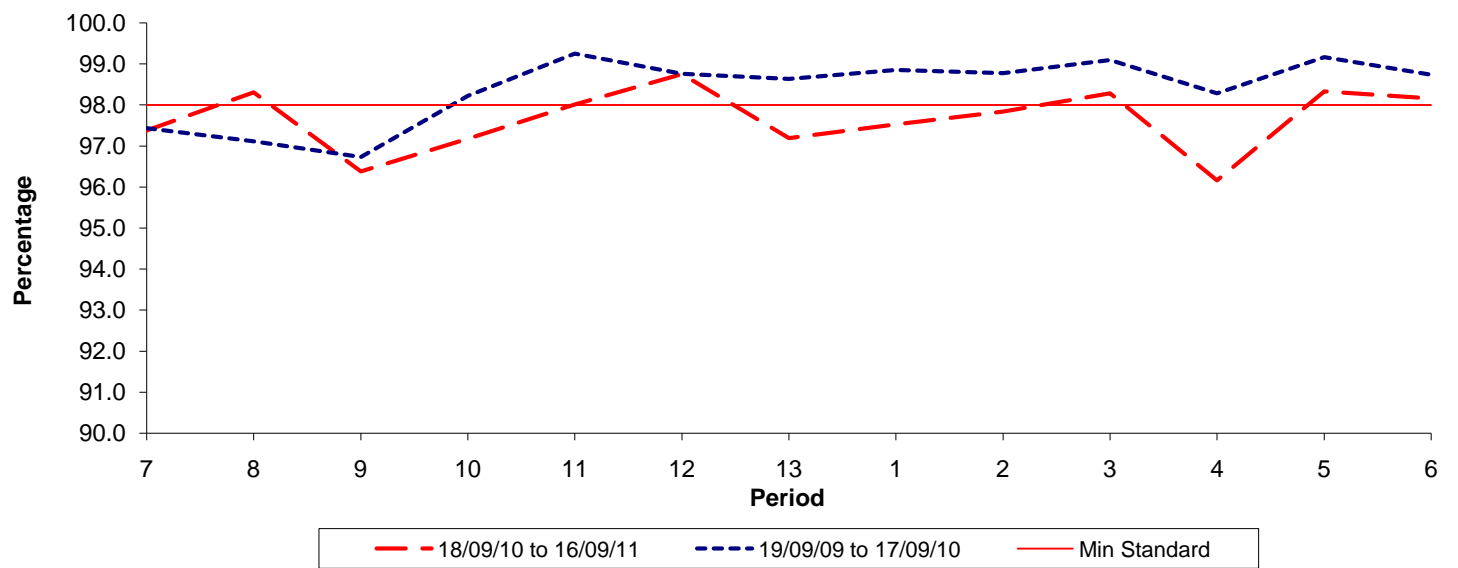


Date Range / Period	7	8	9	10	11	12	13	1	2	3	4	5	6
18/09/10 to 16/09/11	0.67	0.79	0.87	0.95	0.97	0.92	1.12	1.16	1.29	1.24	1.38	1.24	1.12
19/09/09 to 17/09/10	2.02	1.53	1.39	1.20	0.86	0.85	0.97	1.04	0.99	0.87	0.87	0.74	0.70
Min Standard	1.30	1.30	1.30	1.30	1.30	1.30	1.30	1.30	1.30	1.30	1.30	1.30	1.30

Excess Waiting Time figures are based on 12 weeks data

Kilometre Performance

% Kilometres Operated



Date Range / Period	7	8	9	10	11	12	13	1	2	3	4	5	6
18/09/10 to 16/09/11	97.38	98.30	96.38	97.18	98.01	98.75	97.19	97.53	97.84	98.28	96.16	98.33	98.16
19/09/09 to 17/09/10	97.43	97.11	96.73	98.22	99.25	98.76	98.64	98.86	98.77	99.10	98.28	99.16	98.74
Min Standard	98.00	98.00	98.00	98.00	98.00	98.00	98.00	98.00	98.00	98.00	98.00	98.00	98.00

Kilometre figures are based on 4 weeks data